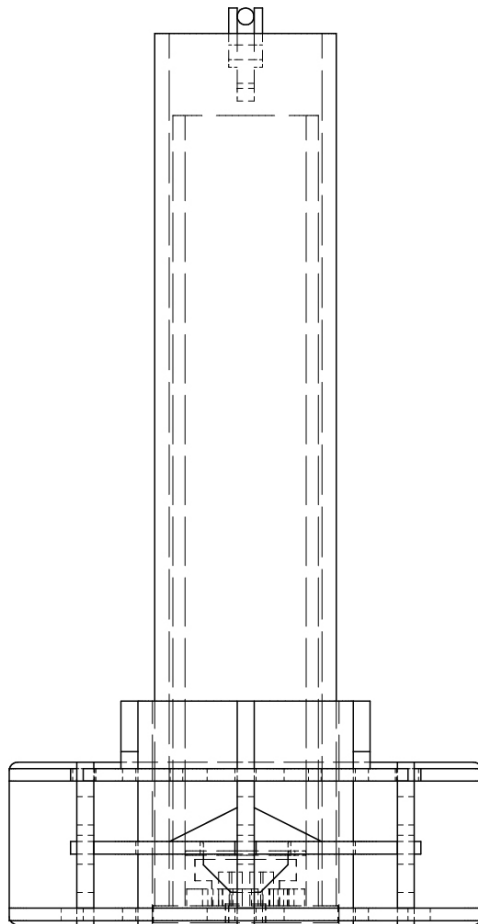


INSTALLATION GUIDE:

Patriot R-1009-12-SM-R



NOTE

- Always ensure any applicable site and safety codes have been followed.
- To protect the finish, keep bollards in original packaging until the exact moment of installation.
- Handle with care to avoid scratching or damaging bollard surfaces as abrasions will lead to rust.
- Once scratched, bollards cannot be repaired to original form without re-finishes the entire surface.

BEFORE INSTALLATION

Check for hazards

Always check for hazards such as water pipes, gas lines, and underground wiring before digging.

Study the site plans

Site plans are generally created by the architect of the project.

The architect will mark the intended location of each bollard on the plan.

Ensure that the plan coincides with the site and familiarize yourself with the intended arrangement of the bollards.

Prepare the site for concrete

Please consult your local Building Code Department to determine the recommended digging depth below the frost line in your area. The new concrete footing must reach this recommended digging depth. If the frost line is less than 12" below surface level, dig to a minimum depth of 12". This is recommended in order to create stability.

STEP 1

Excavate then tamp subgrade with plate tamper.

STEP 2

Use masonry block or chairs to elevate bollard off subgrade, so that top of gusset / sleeve is same height as top of concrete.

STEP 3

Place prefabricated bollards into excavation.

STEP 4

Insert #10 vertical rebar into bollard tube.

STEP 5

Insert #8 rebar through prefabricated holes in bollard and tie to perpendicular #8 rebar.

STEP 6

Fill bollard tube and foundation with concrete.

STEP 7

Inspect the installation

Ensure the bollard is plumb to the surface, and the surface is flat.

Check the bollard for any signs of surface damage. Abrasions should be covered as soon as possible to prevent rust and ensure the proper life of the bollard. For damage repair or other servicing needs, please contact Reliance Foundry's sales department.

