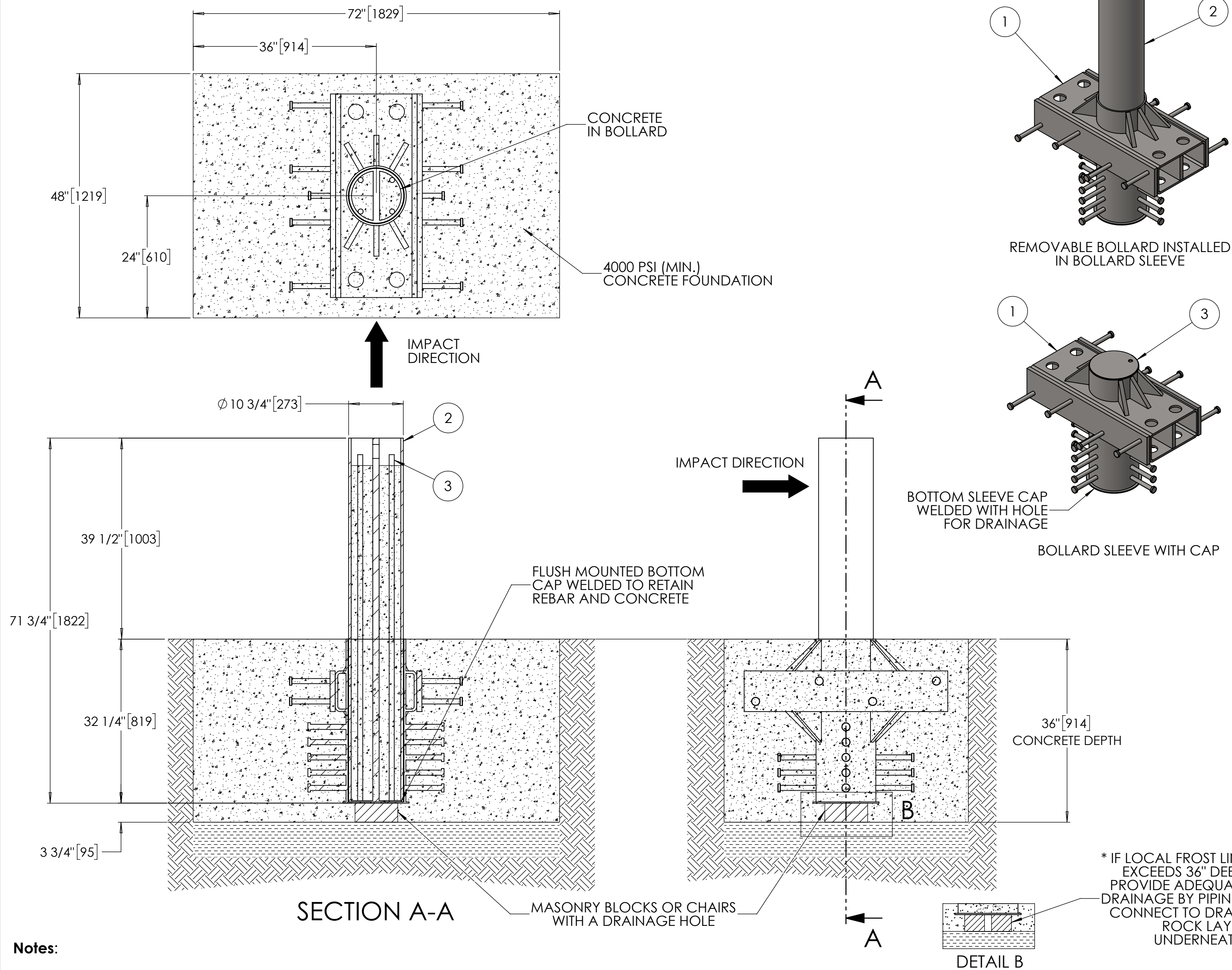


Bollard, Model R-1009-12-R



Notes:

- Embedment details are for reference illustration only. Minimum foundation sizes depend on local soil conditions, weather conditions, and engineering requirements.
- Bollard is provided as shown, with parts listed below. Concrete foundation and/or installation not provided by Reliance Foundry.
- This drawing is not drawn to scale. Dimensions provided herein is for reference only. Please consult Reliance Foundry sales professionals if any dimension is critical to your particular installation.
- Reliance Foundry reserves the right to amend design and specifications without prior notice for product improvement.

ITEM	QTY	PART NUMBER	DESCRIPTION	MATERIAL	INDIVIDUAL WEIGHT (LB)
1	1	2500123	R-1009-12-R K12 Removable Sleeve	Steel	685
2	1	2500124	R-1009-12-R K12 Removable Bollard	Steel	571
3	1	1000169	R-1009-12-R Removable Cap	Steel	9
4	4	REBAR-68	#8 Rebar (60 ksi) - 1" OD X 68" Long (Included with Bollard)	Steel	15



General Description:

The Patriot R-1009-12-R delivers unmatched stopping power in a removable deep-mount design. Engineered to meet ASTM F2656 M50 P1, it is capable of halting a 15,000 lb vehicle traveling at 50 mph when installed in a three-bollard array. Its removable configuration supports controlled site access without sacrificing certified crash protection. Manufactured in the USA, this bollard is built for defense-grade reliability and long-term durability.

Specifications:

- Total Height: 71 3/4" [1822 mm]
- Height Above Grade: 39 1/2" [1003 mm]
- Height Below Grade: 32 1/4" [819 mm]
- Body Size: 40" X 34" [1016mm X 864mm]
- Bollard Diameter: 10 3/4" [273 mm]
- Total Weight: 1256 lb [571 kg] (Bollard & Sleeve)
- Material: Steel

For more information on bollard installation, please visit: <https://www.reliance-foundry.com/bollard/vector-fixed-installation>



Unit 207, 6450 - 148 Street, Surrey, BC V3S 7G7, Canada
1-877-789-3245 info@reliance-foundry.com
www.reliance-foundry.com

TITLE: Bollard R-1009-12-R

NAME	DATE	SIZE	DWG:	REV
JF	2025-09-23	C	2500125-01	02A
MS	2025-09-23	SCALE: 1:15	PART: 2500125	

Bollard, Model R-1009-12-R



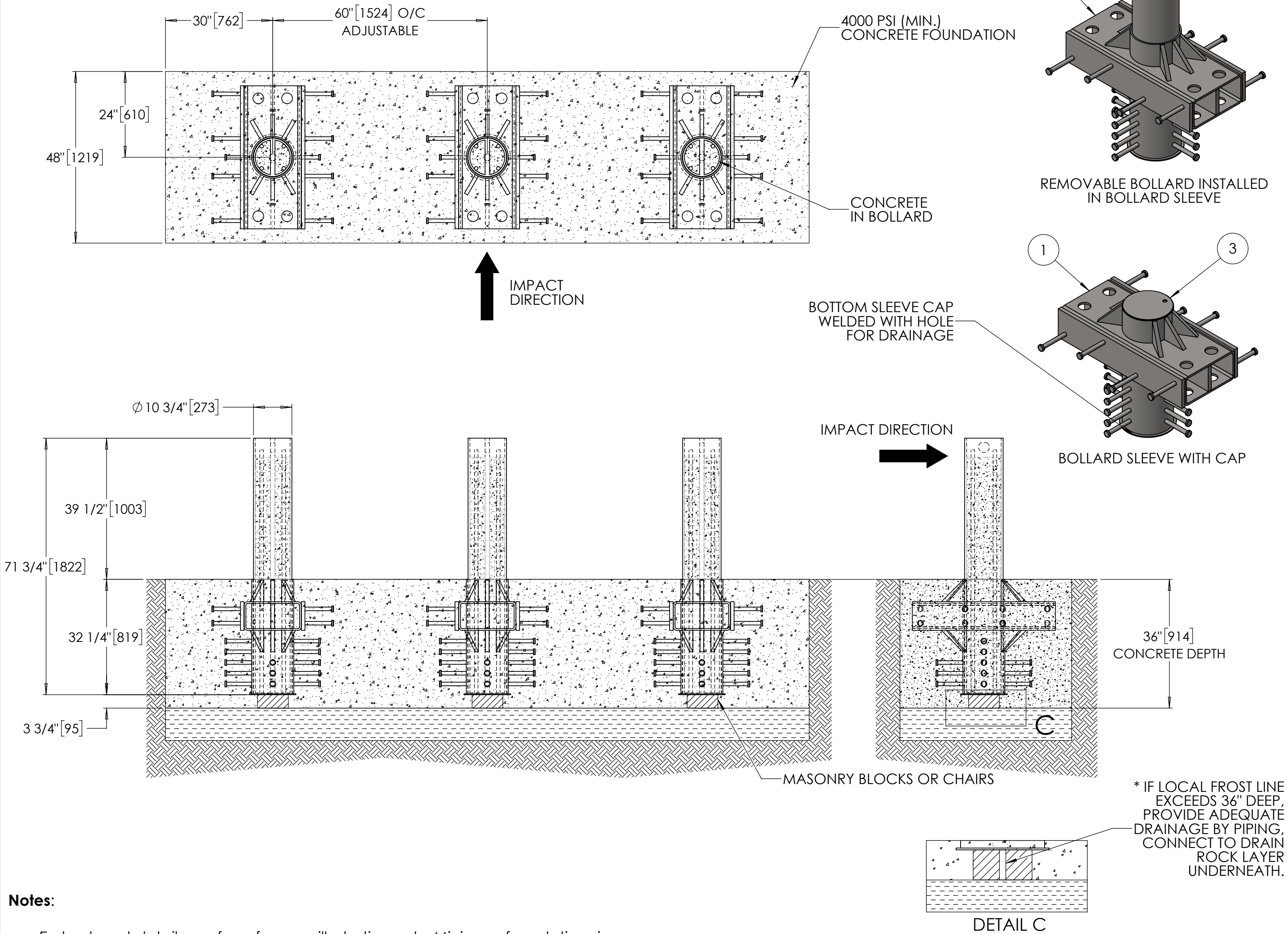
General Description:

The Patriot R-1009-12-R delivers unmatched stopping power in a removable deep-mount design. Engineered to meet ASTM F2656 M50 P1, it is capable of halting a 15,000 lb vehicle traveling at 50 mph when installed in a three-bollard array. Its removable configuration supports controlled site access without sacrificing crash protection. Manufactured in the USA, this bollard is built for defense-grade reliability and long-term durability.

Specifications:

Total Height: 71 3/4" [1822 mm]
Height Above Grade: 39 1/2" [1003 mm]
Height Below Grade: 32 1/4" [819 mm]
Body Size: 40" X 34" [1016mm X 864mm]
Bollard Diameter: 10 3/4" [273 mm]
Total Weight: 1256 lb [571 kg] (Bollard & Sleeve)
Material: Steel


For more information on bollard installation, please visit:
<https://www.reliance-foundry.com/bollard/vector-fixed-installation>



Notes:

- Embedment details are for reference illustration only. Minimum foundation sizes depend on local soil conditions, weather conditions, and engineering requirements.
- Bollard is provided as shown, with parts listed below. Concrete foundation and/or installation not provided by Reliance Foundry.
- This drawing is not drawn to scale. Dimensions provided herein is for reference only. Please consult Reliance Foundry sales professionals if any dimension is critical to your particular installation.
- Reliance Foundry reserves the right to amend design and specifications without prior notice for product improvement.

ITEM	QTY	PART NUMBER	DESCRIPTION	MATERIAL	INDIVIDUAL WEIGHT (LB)
1	3	2500123	R-1009-12-R K12 Removable Sleeve	Steel	685
2	3	2500124	R-1009-12-R K12 Removable Bollard	Steel	571
3	3	1000169	R-1009-12-R Removable Cap	Steel	9
4	12	REBAR-68	#8 Rebar (60 ksi) - 1" OD X 68" Long (Included with Bollard)	Steel	15



Unit 207, 6450 - 148 Street, Surrey, BC V3S 7G7, Canada
1-877-789-3245 info@reliance-foundry.com
www.reliance-foundry.com

TITLE:

Bollard R-1009-12-R

NAME	DATE	SIZE	DWG:	2500125-01	REV
JF	2025-09-23	C	PART:	ASM: 2500125	02A