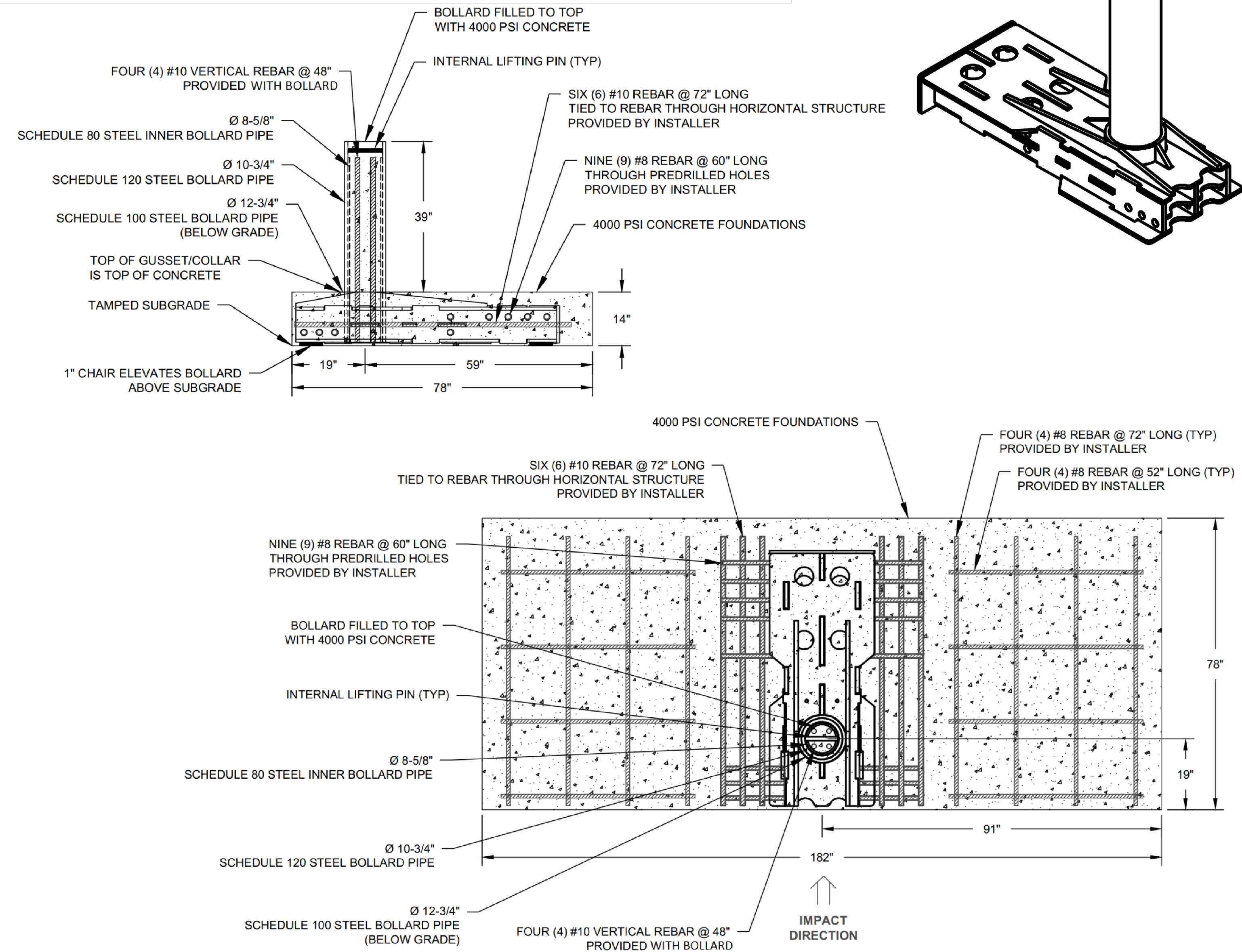


Crash-rated Bollard, Model R-1009-12-SM



General Description:

Reliance Foundry's Patriot R-1009-12-SM offers M50-level protection in a shallow-mount, fixed installation. Certified to ASTM F2656 M50 P1, this bollard stops a 15,000 lb vehicle traveling at 50 mph. The shallow foundation design allows deployment in areas where deep excavation is impractical, without compromising on strength. Fabricated in the USA with Buy America-compliant steel, the R-1009-12-SM is ideal for high-security installations requiring certified impact protection and simplified site integration.

Specifications:

Bollard Diameter: 10 3/4" [273 mm]

Total Height: 52 7/8" [1343 mm]

Height Above Grade: 39" [991 mm]

Height Below Grade: 13 3/8" [340 mm]

Total Weight: 1965 lb [893 kg]


Material: Steel

For more information on bollard installation, please visit: <https://www.reliance-foundry.com/bollard/vector-fixed-installation>



- Notes:**
- Embedment details are for reference illustration only. Minimum foundation sizes depend on local soil conditions, weather conditions, and engineering requirements.
 - Bollard is provided as shown, with parts listed below. Concrete foundation and/or installation not provided by Reliance Foundry.
 - This drawing is not drawn to scale. Dimensions provided herein is for reference only. Please consult Reliance Foundry sales professionals if any dimension is critical to your particular installation.
 - Reliance Foundry reserves the right to amend design and specifications without prior notice for product improvement.

ITEM	QTY	PART NUMBER	DESCRIPTION	MATERIAL
1	1	2500068	R-1009-12-SM M50 Fixed Bollard	Steel
2	4	REBAR10-48	#10 Rebar (60 ksi) - 1-1/4" OD X 48" Long (Included with Bollard)	Steel
3	8	REBAR8-52	#8 Rebar (60 ksi) - 1" OD X 52" Long (Provided by Installer)	Steel
4	9	REBAR8-60	#8 Rebar (60 ksi) - 1" OD X 60" Long (Provided by Installer)	Steel
5	8	REBAR8-72	#8 Rebar (60 ksi) - 1" OD X 72" Long (Provided by Installer)	Steel
6	6	REBAR10-72	#10 Rebar (60 ksi) - 1-1/4" OD X 72" Long (Provided by Installer)	Steel



Unit 207, 6450 - 148 Street, Surrey, BC V3S 7G7, Canada
1-877-789-3245 info@reliance-foundry.com
www.reliance-foundry.com

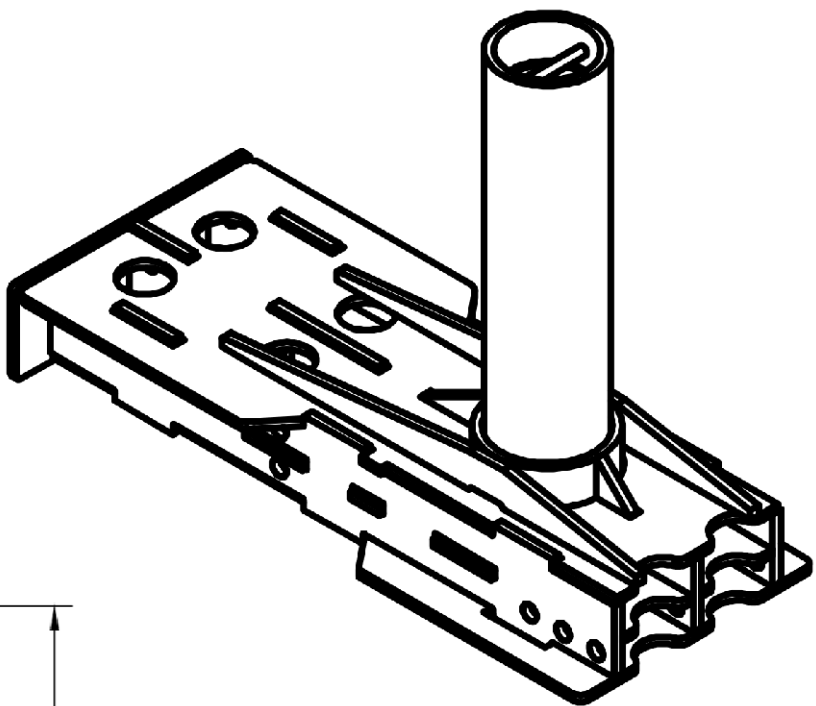
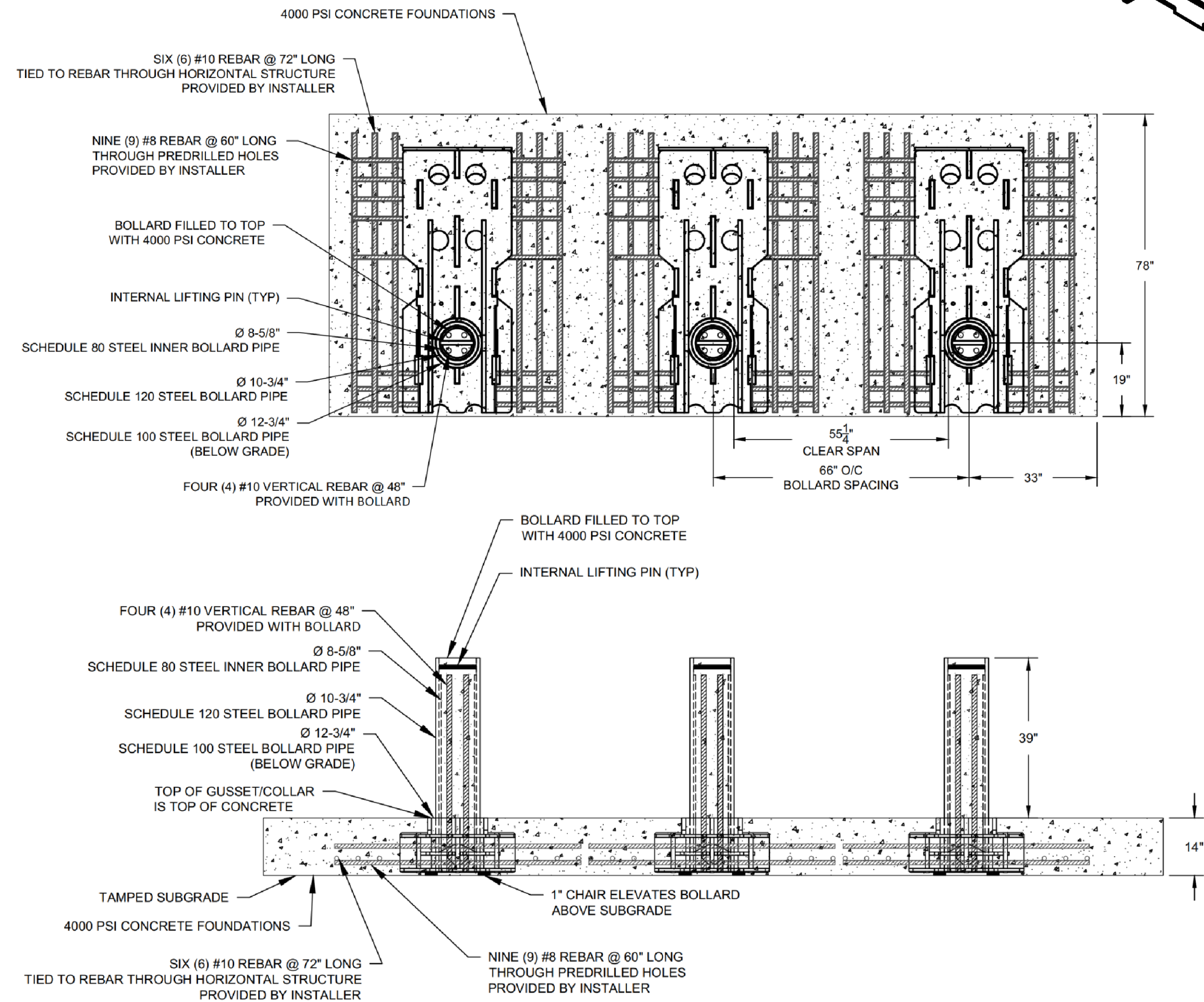
TITLE:

BOLLARD R-1009-12-SM

	NAME	DATE	SIZE	DWG:	2500069-01	REV
DRAWN	JF	2025-09-16	C	PART:		01C
				ASM:	2500069	
REVIEWED	JL	2025-09-16				

Crash-rated Bollard, Model R-1009-12-SM

TYPICAL BOLLARD ARRAY (1 BOLLARD CAN WITHSTAND VEHICLE IMPACT ALONE)



PATRIOT
BUY AMERICA

General Description:

Reliance Foundry's Patriot R-1009-12-SM offers M50-level protection in a shallow-mount, fixed installation. Certified to ASTM F2656 M50 P1, this bollard stops a 15,000 lb vehicle traveling at 50 mph. The shallow foundation design allows deployment in areas where deep excavation is impractical, without compromising on strength. Fabricated in the USA with Buy America-compliant steel, the R-1009-12-SM is ideal for high-security installations requiring certified impact protection and simplified site integration.

Specifications:

- Bollard Diameter: 10 3/4" [273 mm]
- Total Height: 52 7/8" [1343 mm]
- Height Above Grade: 39" [991 mm]
- Height Below Grade: 13 3/8" [340 mm]
- Total Weight: 1965 lb [893 kg]
- Material: Steel

For more information on bollard installation, please visit:
<https://www.reliance-foundry.com/bollard/vector-fixed-installation>



Notes:

- Embedment details are for reference illustration only. Minimum foundation sizes depend on local soil conditions, weather conditions, and engineering requirements.
- Bollard is provided as shown, with parts listed below. Concrete foundation and/or installation not provided by Reliance Foundry.
- This drawing is not drawn to scale. Dimensions provided herein is for reference only. Please consult Reliance Foundry sales professionals if any dimension is critical to your particular installation.
- Reliance Foundry reserves the right to amend design and specifications without prior notice for product improvement.

ITEM	QTY	PART NUMBER	DESCRIPTION	MATERIAL
1	3	2500068	R-1009-12-SM M50 Fixed Bollard	Steel
2	12	REBAR10-48	#10 Rebar (60 ksi) - 1-1/4" OD X 48" Long (Included with Bollard)	Steel
3	27	REBAR8-60	#8 Rebar (60 ksi) - 1" OD X 60" Long (Provided by Installer)	Steel
4	18	REBAR10-72	#10 Rebar (60 ksi) - 1-1/4" OD X 72" Long (Provided by Installer)	Steel



Unit 207, 6450 - 148 Street, Surrey, BC V3S 7G7, Canada
1-877-789-3245 info@reliance-foundry.com
www.reliance-foundry.com

TITLE:
BOLLARD R-1009-12-SM

	NAME	DATE	SIZE	DWG:	2500069-01	REV
DRAWN	JF	2025-09-16	C	PART:	ASM: 2500069	01C
REVIEWED	JL	2025-09-16	SCALE:	1:15		SHEET 2 OF 2