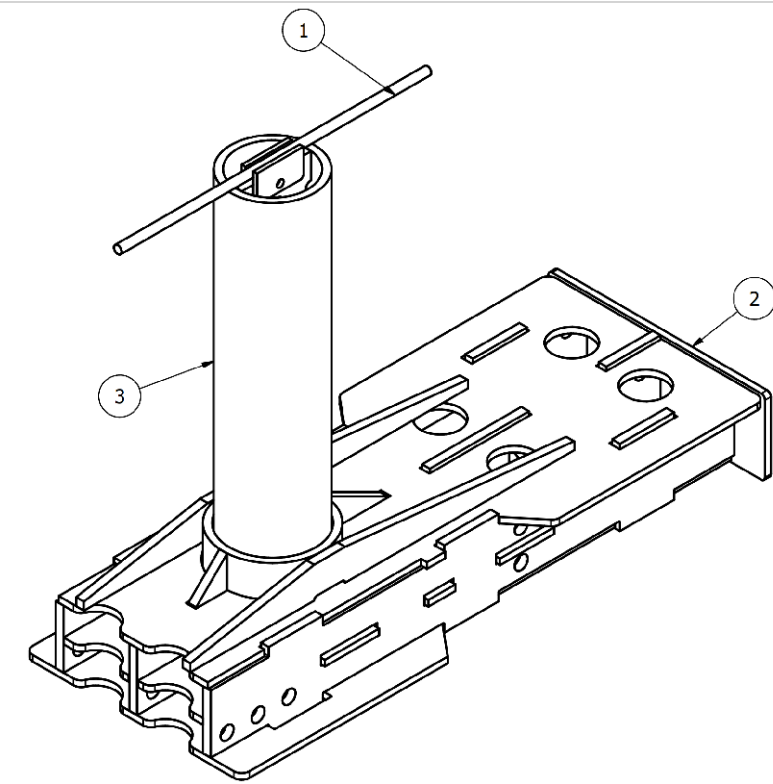
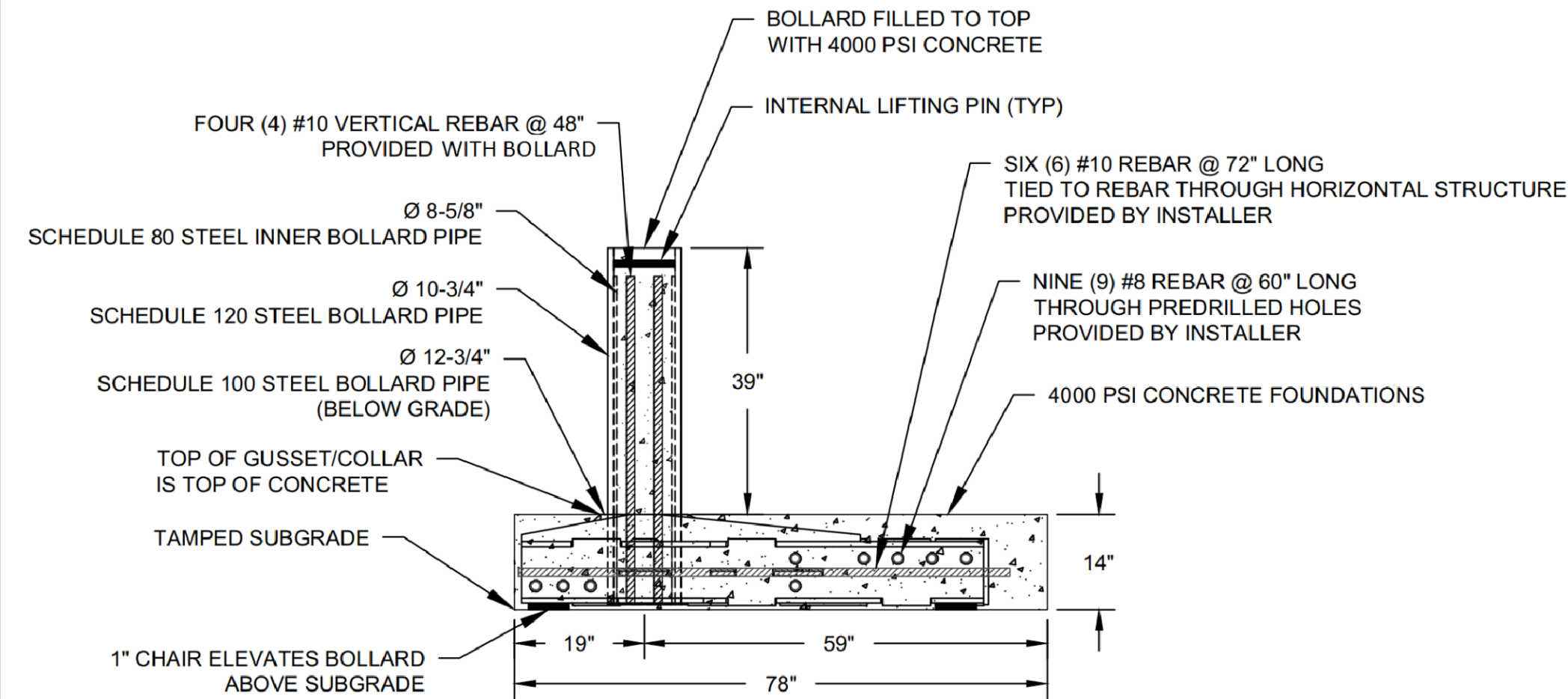


Bollard, Model R-1009-12-SM-R



PATRIOT
BUY AMERICA

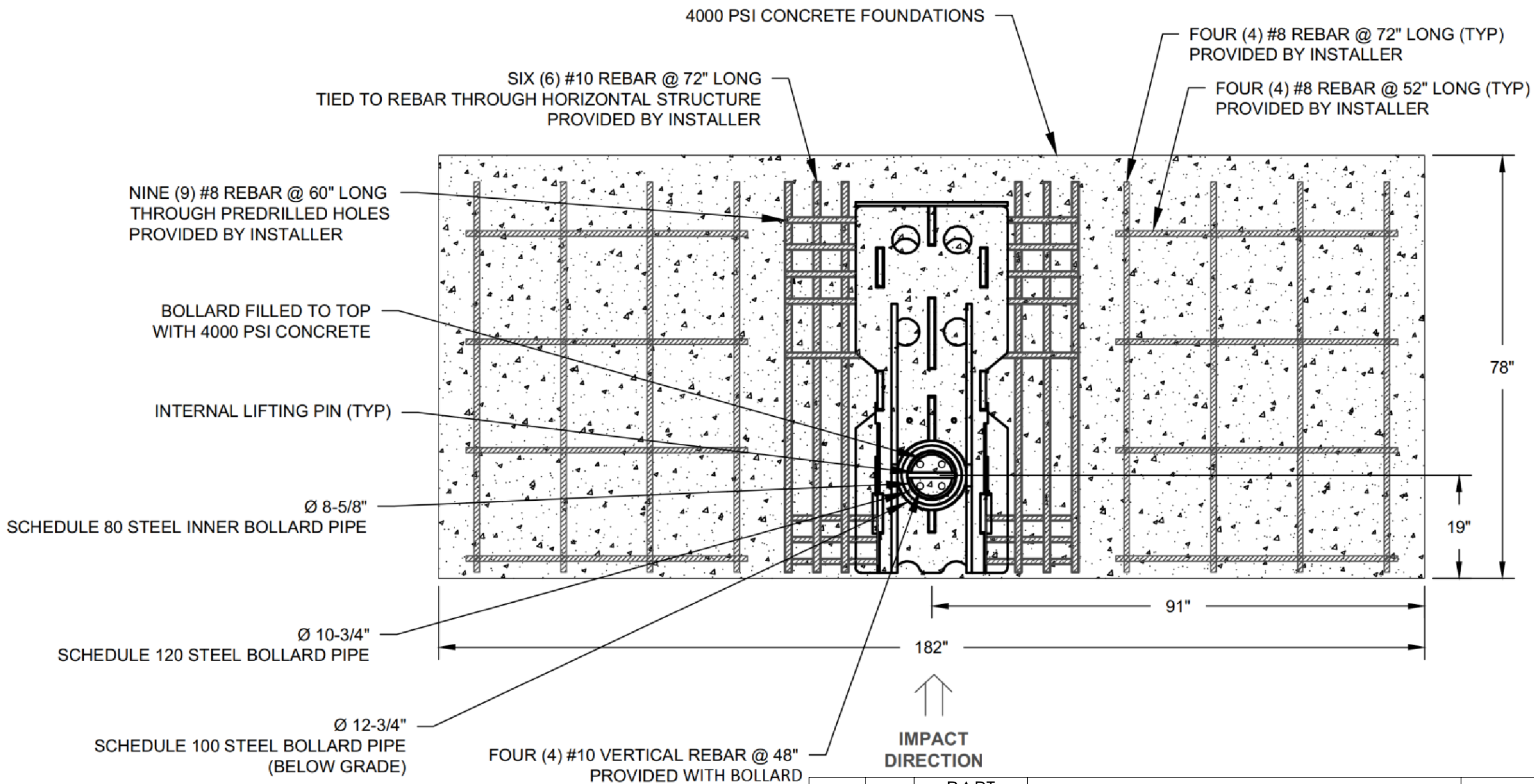
General Description:

The Patriot R-1009-12-SM-R combines shallow foundation engineering with removable functionality for unmatched versatility. Engineered to ASTM F2656 M50 P1 standards, it is capable of stopping a 15,000 lb vehicle at 50 mph with minimum penetration. This bollard allows for flexible access while delivering uncompromising perimeter defense. Proudly manufactured in America from high-strength steel, the Patriot R-1009-12-SM-R ensures both security and compliance with Buy America mandates.

Specifications:

Bollard Diameter: 10 3/4" [273 mm]
Total Height: 52 7/8" [1343 mm]
Height Above Grade: 39" [991 mm]
Height Below Grade: 13 3/8" [340 mm]
Total Weight: 2235 lb [1016 kg] (Bollard & Sleeve)
Material: Steel

For more information on bollard installation, please visit:
<https://www.reliance-foundry.com/bollard/vector-fixed-installation>



Notes:

- Embedment details are for reference illustration only. Minimum foundation sizes depend on local soil conditions, weather conditions, and engineering requirements.
- Bollard is provided as shown, with parts listed below. Concrete foundation and/or installation not provided by Reliance Foundry.
- This drawing is not drawn to scale. Dimensions provided herein is for reference only. Please consult Reliance Foundry sales professionals if any dimension is critical to your particular installation.
- Reliance Foundry reserves the right to amend design and specifications without prior notice for product improvement.

ITEM	QTY	PART NUMBER	DESCRIPTION	MATERIAL
1	1	2500134	Bollard Pipe Twist Tool (For Removing Bollard)	Steel
2	1	2500070	R-1009-12-SM-R M50 Removable Sleeve	Steel
3	1	2500071	R-1009-12-SM-R M50 Removable Bollard	Steel
4	4	REBAR10-48	#10 Rebar (60 ksi) - 1-1/4" OD X 48" Long (Included with Bollard)	Steel
5	8	REBAR8-52	#8 Rebar (60 ksi) - 1" OD X 52" Long (Provided by Installer)	Steel
6	9	REBAR8-60	#8 Rebar (60 ksi) - 1" OD X 60" Long (Provided by Installer)	Steel
7	8	REBAR8-72	#8 Rebar (60 ksi) - 1" OD X 72" Long (Provided by Installer)	Steel
8	6	REBAR10-72	#10 Rebar (60 ksi) - 1-1/4" OD X 72" Long (Provided by Installer)	Steel



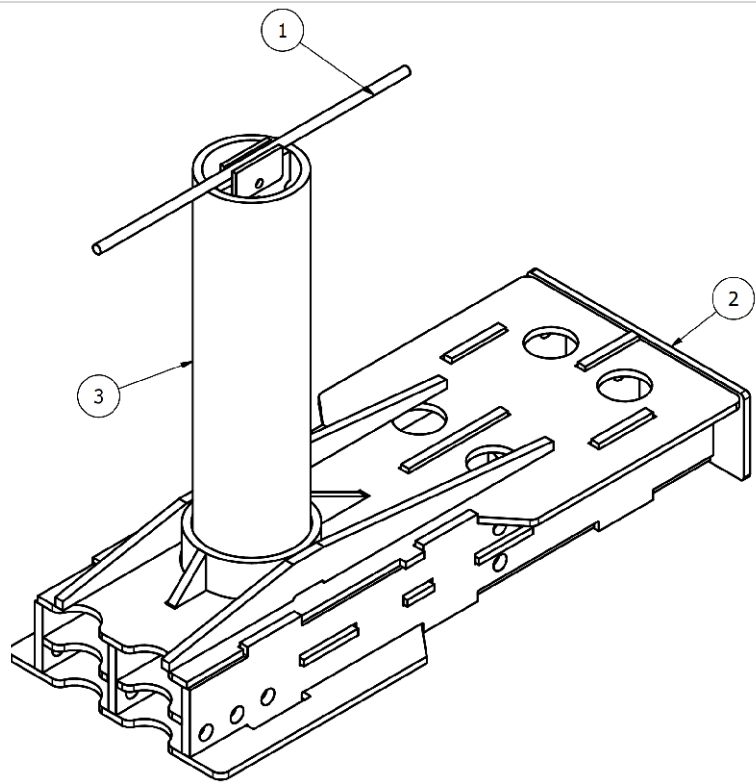
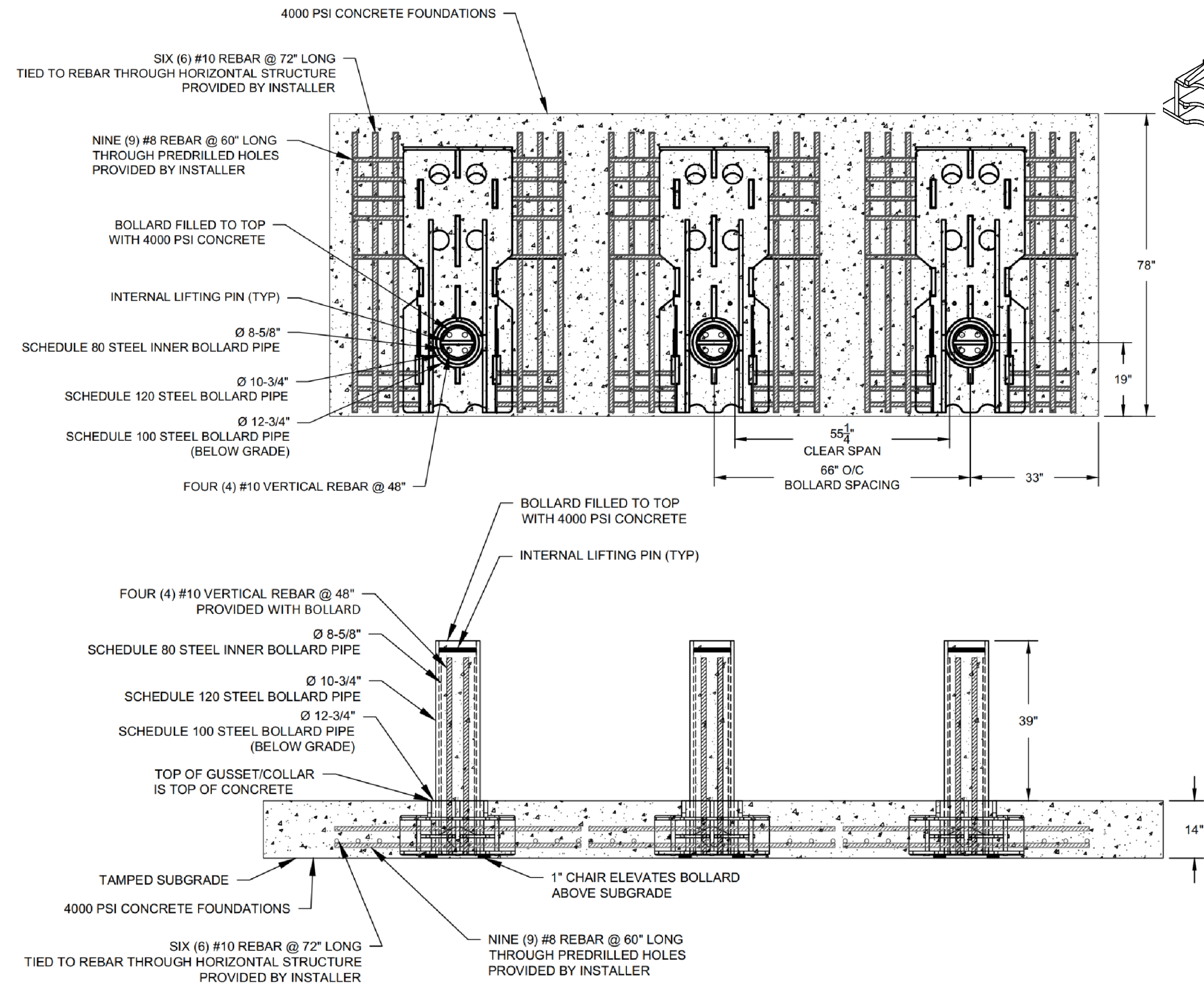
Unit 207, 6450 - 148 Street, Surrey, BC V3S 7G7, Canada
1-877-789-3245 info@reliance-foundry.com
www.reliance-foundry.com

TITLE:

BOLLARD R-1009-12-SM

	NAME	DATE	SIZE	DWG:	2500053-01	REV
DRAWN	JF	2025-09-16	C	PART:	ASM: 2500053	01C
REVIEWED	JL	2025-09-16	SCALE:	1:15		SHEET 1 OF 2

Bollard, Model R-1009-12-SM-R



PATRIOT
BUY AMERICA

General Description:

The Patriot R-1009-12-SM-R combines shallow foundation engineering with removable functionality for unmatched versatility. Engineered to ASTM F2656 M50 P1 standards, it is capable of stopping a 15,000 lb vehicle at 50 mph with minimum penetration. This bollard allows for flexible access while delivering uncompromising perimeter defense. Proudly manufactured in America from high-strength steel, the Patriot R-1009-12-SM-R ensures both security and compliance with Buy America mandates.

Specifications:

- Bollard Diameter: 10 3/4" [273 mm]
- Total Height: 52 7/8" [1343 mm]
- Height Above Grade: 39" [991 mm]
- Height Below Grade: 13 3/8" [340 mm]
- Total Weight: 2235 lb [1016 kg] (Bollard & Sleeve)
- Material: Steel

For more information on bollard installation, please visit:
<https://www.reliance-foundry.com/bollard/vector-fixed-installation>

Notes:

- Embedment details are for reference illustration only. Minimum foundation sizes depend on local soil conditions, weather conditions, and engineering requirements.
- Bollard is provided as shown, with parts listed below. Concrete foundation and/or installation not provided by Reliance Foundry.
- This drawing is not drawn to scale. Dimensions provided herein is for reference only. Please consult Reliance Foundry sales professionals if any dimension is critical to your particular installation.
- Reliance Foundry reserves the right to amend design and specifications without prior notice for product improvement.

ITEM	QTY	PART NUMBER	DESCRIPTION	MATERIAL
1	1	2500134	Bollard Pipe Twist Tool (For Removing Bollard)	Steel
2	3	2500070	R-1009-12-SM-R M50 Removable Sleeve	Steel
3	3	2500071	R-1009-12-SM-R M50 Removable Bollard	Steel
4	12	REBAR10-48	#10 Rebar (60 ksi) - 1-1/4" OD X 48" Long (Included with Bollard)	Steel
5	9	REBAR8-60	#8 Rebar (60 ksi) - 1" OD X 60" Long (Provided by Installer)	Steel
6	6	REBAR10-72	#10 Rebar (60 ksi) - 1-1/4" OD X 72" Long (Provided by Installer)	Steel



Unit 207, 6450 - 148 Street, Surrey, BC V3S 7G7, Canada
1-877-789-3245 info@reliance-foundry.com
www.reliance-foundry.com

TITLE:

BOLLARD R-1009-12-SM

	NAME	DATE	SIZE	DWG:	2500053-01	REV
DRAWN	JF	2025-09-16	C	PART:		01C
REVIEWED	JL	2025-09-16	SCALE:	1:15	ASM: 2500069	SHEET 2 OF 2