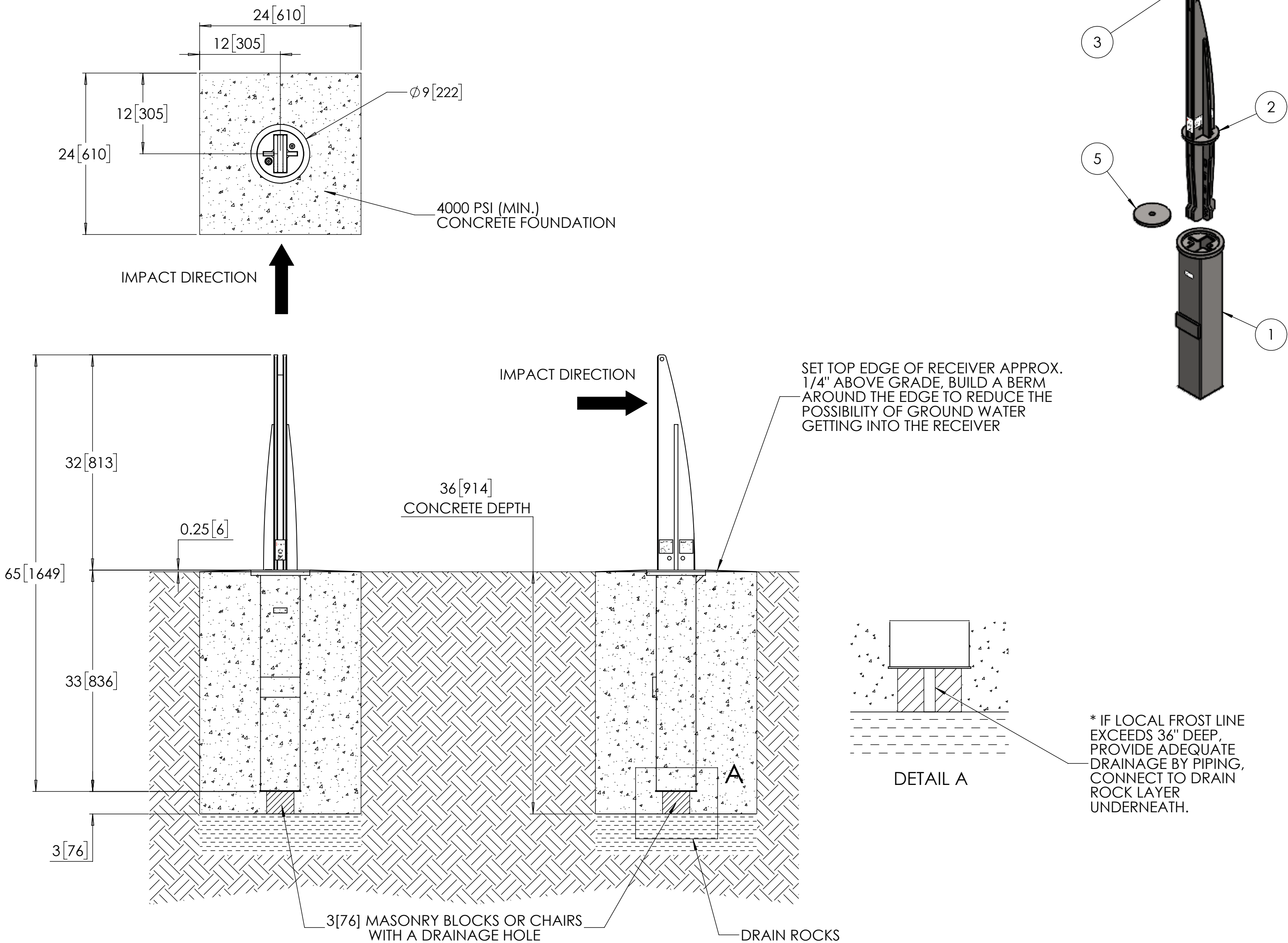


Vector S10 Patriot Crash-Rated Bollard - R-1010-S10-R



General Description:

The Vector S10 Patriot Removable Bollard pairs trusted crash-rated performance with American-made versatility. Certified to the ASTM F3016 S10 P1 standard, this storefront safety bollard offers reliable defense against low-speed vehicle impacts while allowing temporary removal for flexible access. Its distinctive form and curved profile enhance strength, while the rebar-free installation simplifies setup and reduces costs. Domestic sourcing ensures dependable quality, Buy America compliance, and faster turnarounds.

Specifications:

- Total Height: 69" [1753 mm]
- Height Above Grade: 32" [813 mm]
- Height Below Grade: 33" [840 mm]
- Weight: 150 lbs [68 kg]
- Material: Steel

Finish Options:

- Hot-dip Galvanised
- Primed Black

For more information on bollard installation, please visit: <https://www.reliance-foundry.com/bollard/vector-fixed-installation>



NOTES:

- EMBEDMENT DETAILS ARE FOR REFERENCE ILLUSTRATION ONLY. MINIMUM FOUNDATION SIZES DEPEND ON LOCAL SOIL CONDITIONS, WEATHER CONDITIONS, AND ENGINEERING REQUIREMENTS.
- BOLLARD IS PROVIDED AS SHOWN, WITH PARTS LISTED BELOW. CONCRETE FOUNDATION AND/OR INSTALLATION NOT PROVIDED BY RELIANCE FOUNDRY.
- THIS DRAWING IS NOT DRAWN TO SCALE. DIMENSIONS PROVIDED HEREIN IS FOR REFERENCE ONLY. PLEASE CONSULT RELIANCE FOUNDRY SALES PROFESSIONALS IF ANY DIMENSION IS CRITICAL TO YOUR PARTICULAR INSTALLATION.
- RELIANCE FOUNDRY RESERVES THE RIGHT TO AMEND DESIGN AND SPECIFICATIONS WITHOUT PRIOR NOTICE FOR PRODUCT IMPROVEMENT.

TOOL REQUIRED: T45 TORX KEY

ITEM	QTY.	PART NUMBER	DESCRIPTION	MATERIAL	INDIVIDUAL WEIGHT
1	1	2500022	S10 RECEIVER ASSEMBLY	STEEL	34 LB
2	1	2500023	S10 REMOVABLE BOLLARD ASSEMBLY	STEEL	116 LB
3	1	1000063	BOLLARD FLANGE CONDUIT WASHER	PLASTIC	-
4	2	1500008	TORX CSK SCREW - M10 - 50	STAINLESS STEEL	-
5	1	1000061	S10 RECEIVER COVER (OPTIONAL)	STEEL	-



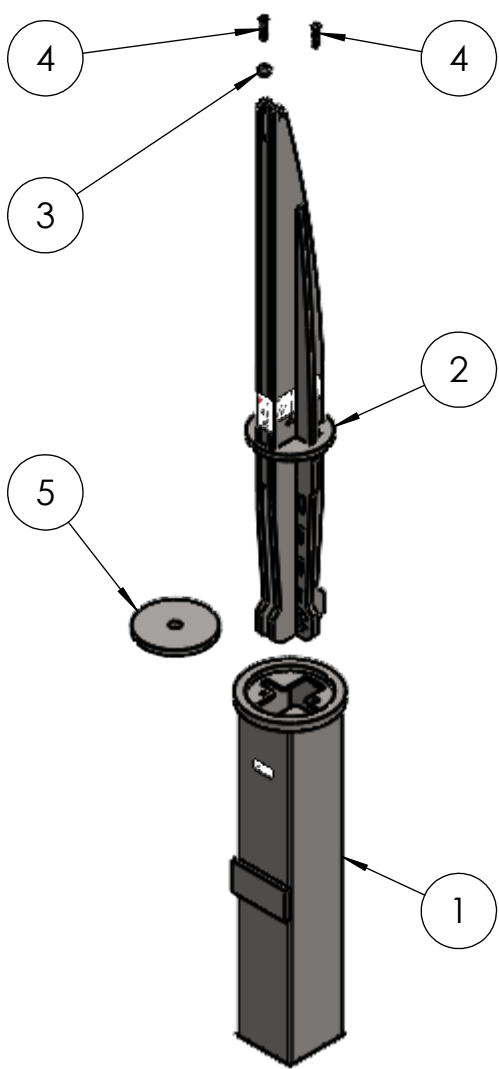
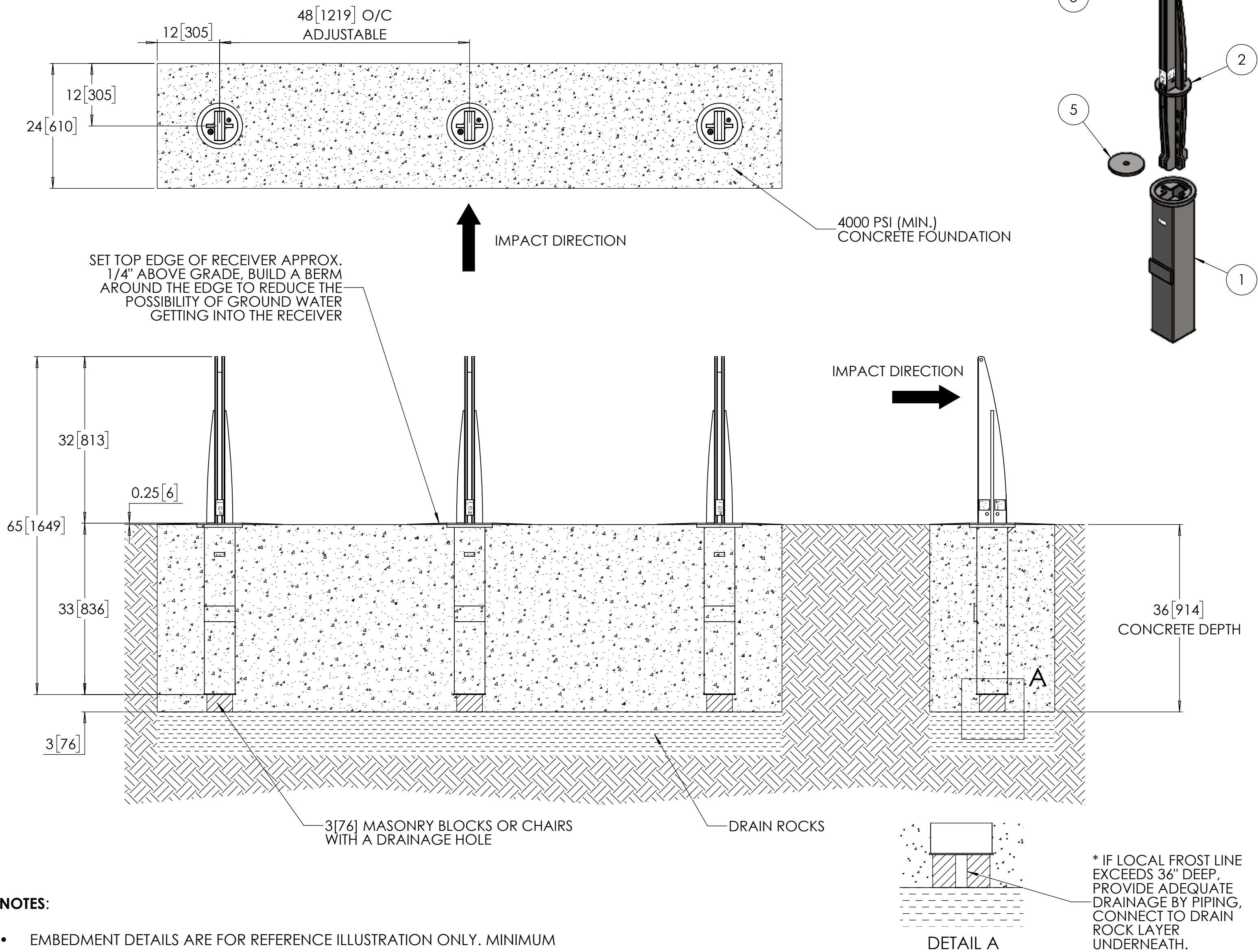
Unit 207, 6450 - 148 Street, Surrey, BC V3S 7G7, Canada
1-877-789-3245 info@reliance-foundry.com
www.reliance-foundry.com

TITLE:
S10 REMOVABLE BOLLARD
INSTALLATION

	NAME	DATE	SIZE	DWG:	2500024-01	REV
DRAWN	JF	2025-07-14	C	PART:		01B
				ASM:	2500024	
REVIEWED	MS	2025-07-14	SCALE:	1:12		SHEET 1 OF 2

Vector S10 Patriot Crash-Rated Bollard - R-1010-S10-R

TYPICAL BOLLARD ARRAY SHOWN (1 BOLLARD CAN WITHSTAND VEHICLE IMPACT ALONE)



General Description:

The Vector S10 Patriot Removable Bollard pairs trusted crash-rated performance with American-made versatility. Certified to the ASTM F3016 S10 P1 standard, this storefront safety bollard offers reliable defense against low-speed vehicle impacts while allowing temporary removal for flexible access. Its distinctive form and curved profile enhance strength, while the rebar-free installation simplifies setup and reduces costs. Domestic sourcing ensures dependable quality, Buy America compliance, and faster turnarounds.

Specifications:

Total Height: 69" [1753 mm]
Height Above Grade: 32" [813 mm]
Height Below Grade: 33" [840 mm]
Weight: 150 lbs [68 kg]
Material: Steel

Finish Options:

- Hot-dip Galvanised
- Primed Black


For more information on bollard installation, please visit:
<https://www.reliance-foundry.com/bollard/vector-fixed-installation>



- NOTES:**
- EMBEDMENT DETAILS ARE FOR REFERENCE ILLUSTRATION ONLY. MINIMUM FOUNDATION SIZES DEPEND ON LOCAL SOIL CONDITIONS, WEATHER CONDITIONS, AND ENGINEERING REQUIREMENTS.
 - BOLLARD IS PROVIDED AS SHOWN, WITH PARTS LISTED BELOW. CONCRETE FOUNDATION AND/OR INSTALLATION NOT PROVIDED BY RELIANCE FOUNDRY.
 - THIS DRAWING IS NOT DRAWN TO SCALE. DIMENSIONS PROVIDED HEREIN IS FOR REFERENCE ONLY. PLEASE CONSULT RELIANCE FOUNDRY SALES PROFESSIONALS IF ANY DIMENSION IS CRITICAL TO YOUR PARTICULAR INSTALLATION.
 - RELIANCE FOUNDRY RESERVES THE RIGHT TO AMEND DESIGN AND SPECIFICATIONS WITHOUT PRIOR NOTICE FOR PRODUCT IMPROVEMENT.

TOOL REQUIRED: T45 TORX KEY

ITEM	QTY.	PART NUMBER	DESCRIPTION	MATERIAL	INDIVIDUAL WEIGHT
1	3	2500022	S10 RECEIVER ASSEMBLY	STEEL	34 LB
2	3	2500023	S10 REMOVABLE BOLLARD ASSEMBLY	STEEL	116 LB
3	3	1000063	BOLLARD FLANGE CONDUIT WASHER	PLASTIC	-
4	6	1500008	TORX CSK SCREW - M10 - 50	STAINLESS STEEL	-
5	3	1000061	S10 RECEIVER COVER (OPTIONAL)	STEEL	-



Unit 207, 6450 - 148 Street, Surrey, BC V3S 7G7, Canada
1-877-789-3245 info@reliance-foundry.com
www.reliance-foundry.com

TITLE: S10 REMOVABLE BOLLARD INSTALLATION

	NAME	DATE	SIZE	DWG:	2500024-01	REV
DRAWN	JF	2025-07-14	C	PART:		01B
				ASM:	2500024	
REVIEWED	MS	2025-07-14	SCALE:	1:15		SHEET 2 OF 2