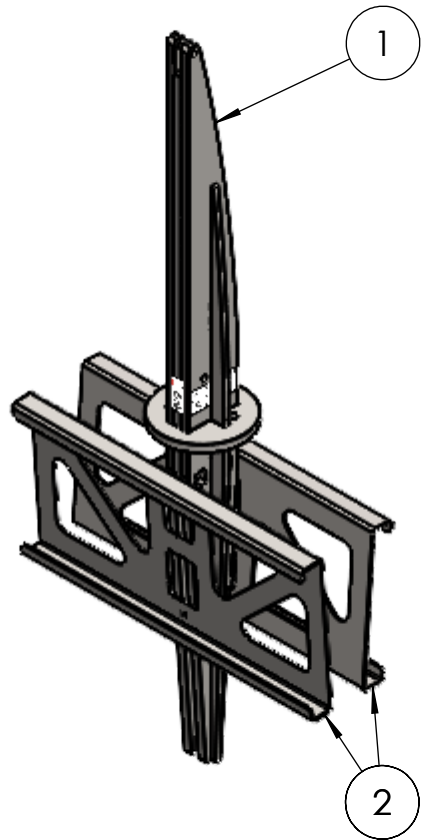
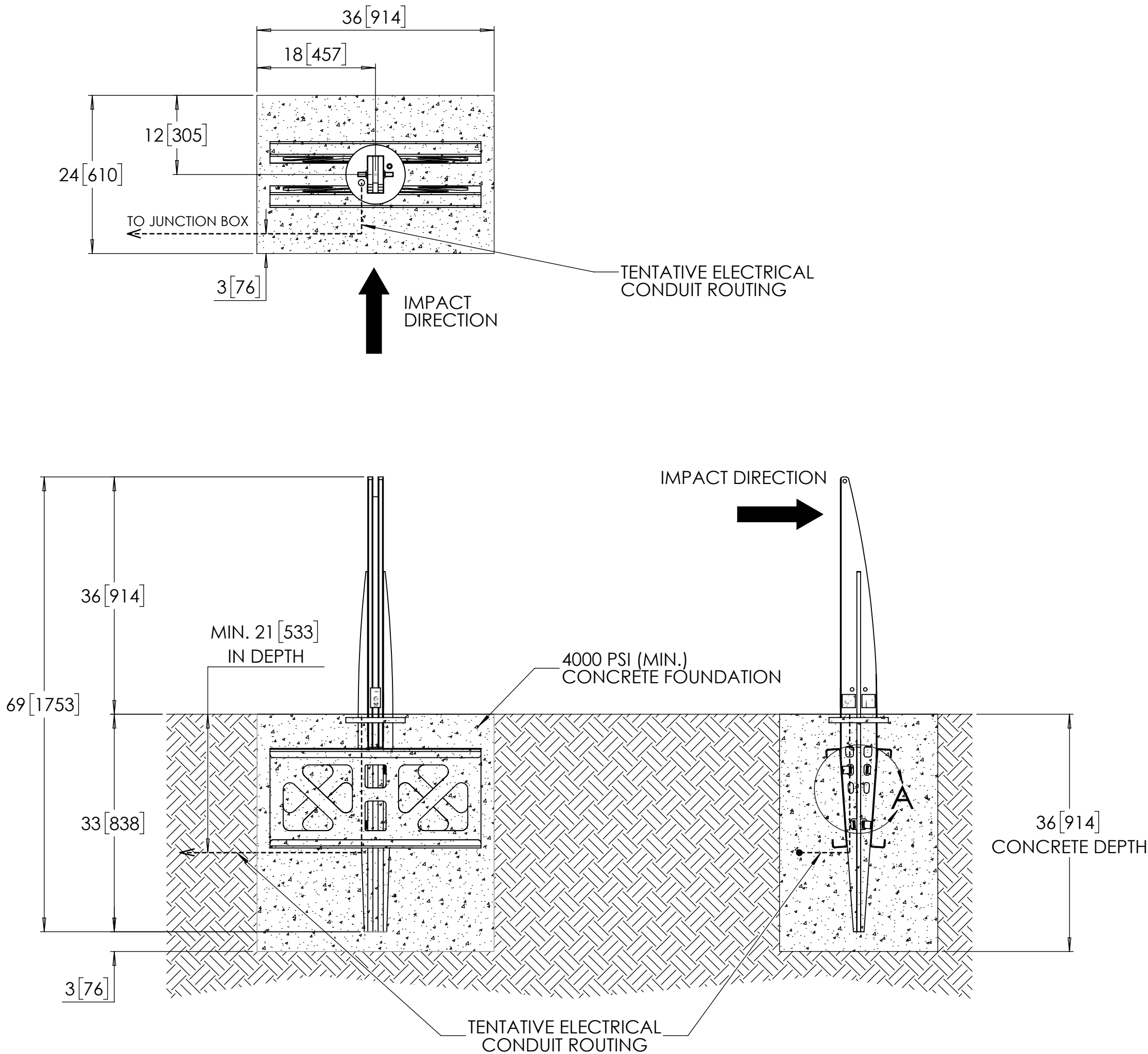


Crash-rated Bollard, Model R-1010-S20



General Description:

The Vector S20 Fixed Bollard offers crash-rated protection against vehicle collisions while maintaining a modern, stylish appearance. This ASTM F3016-19 S20 certified bollard is designed for reliable storefront safety with streamlined installation. Its curved profile and side flanges enhance durability, while the no-rebar design ensures faster, cost-effective setup.

- Specifications:**
- Total Height: 69" [1753 mm]
 - Height Above Grade: 36" [914 mm]
 - Height Below Grade: 33" [838 mm]
 - Weight: 223 lbs [101 kg]
 - Material: Steel
 - Finish: Hot-dip Galvanised

For more information on bollard installation, please visit:
<https://www.reliance-foundry.com/bollard/vector-fixed-installation>



- NOTES:**
- EMBEDMENT DETAILS ARE FOR REFERENCE ILLUSTRATION ONLY. MINIMUM FOUNDATION SIZES DEPEND ON LOCAL SOIL CONDITIONS, WEATHER CONDITIONS, AND ENGINEERING REQUIREMENTS.
 - BOLLARD IS PROVIDED AS SHOWN, WITH PARTS LISTED BELOW. CONCRETE FOUNDATION AND/OR INSTALLATION NOT PROVIDED BY RELIANCE FOUNDRY.
 - THIS DRAWING IS NOT DRAWN TO SCALE. DIMENSIONS PROVIDED HEREIN IS FOR REFERENCE ONLY. PLEASE CONSULT RELIANCE FOUNDRY SALES PROFESSIONALS IF ANY DIMENSION IS CRITICAL TO YOUR PARTICULAR INSTALLATION.
 - RELIANCE FOUNDRY RESERVES THE RIGHT TO AMEND DESIGN AND SPECIFICATIONS WITHOUT PRIOR NOTICE FOR PRODUCT IMPROVEMENT.

ITEM	QTY	PART NUMBER	DESCRIPTION	MATERIAL	INDIVIDUAL WEIGHT (LB)
1	1	250-0027	S20 FIXED BOLLARD ASSEMBLY	STEEL	178
2	2	100-0097	FOUNDATION REINFORCEMENT BRACKET	STEEL	22

RELIANCE FOUNDRY
SINCE 1925

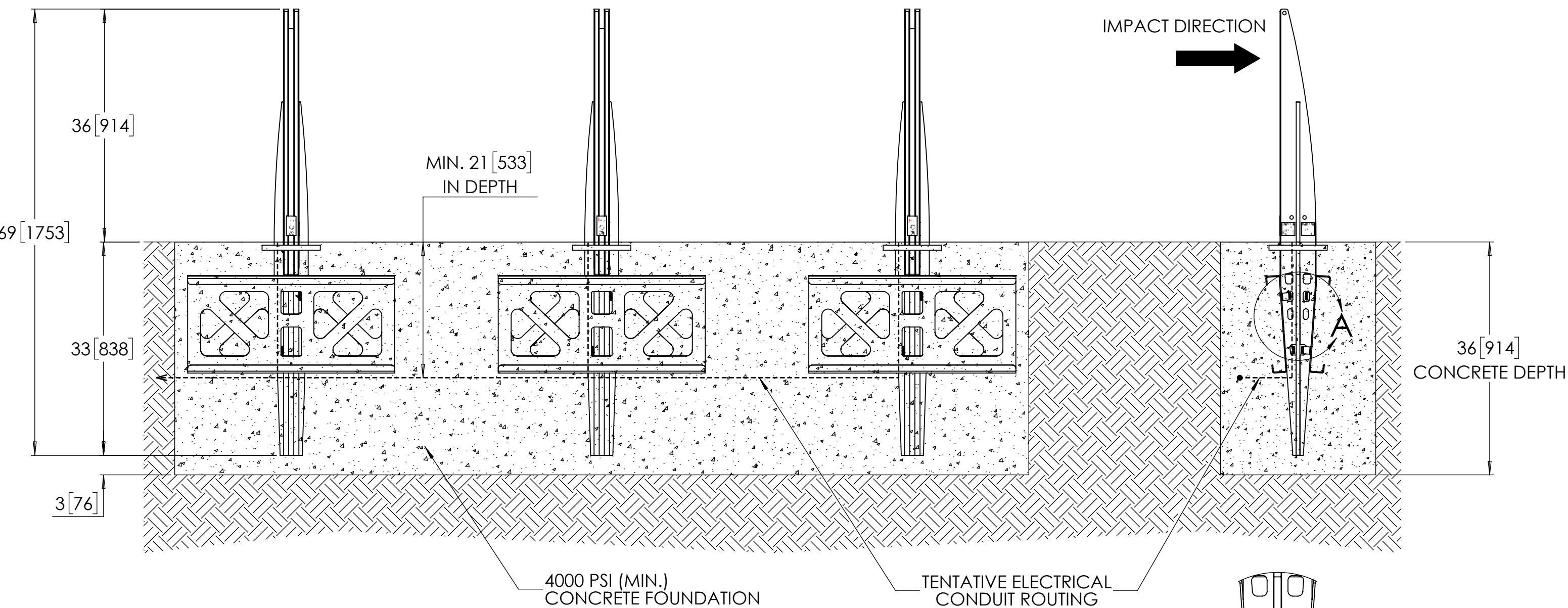
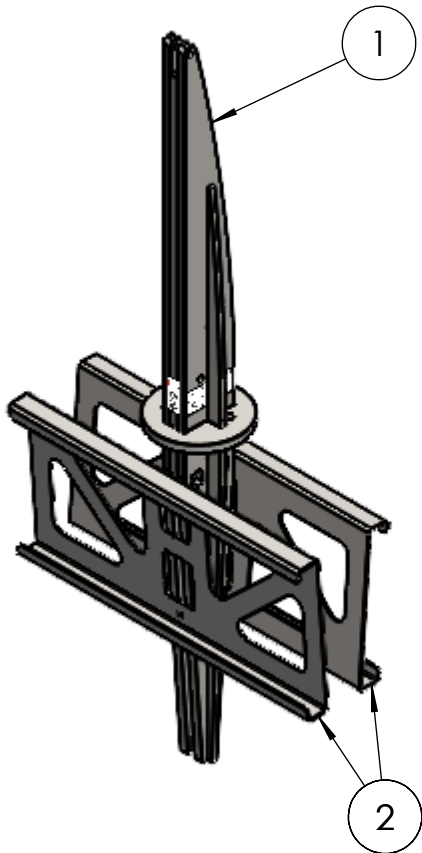
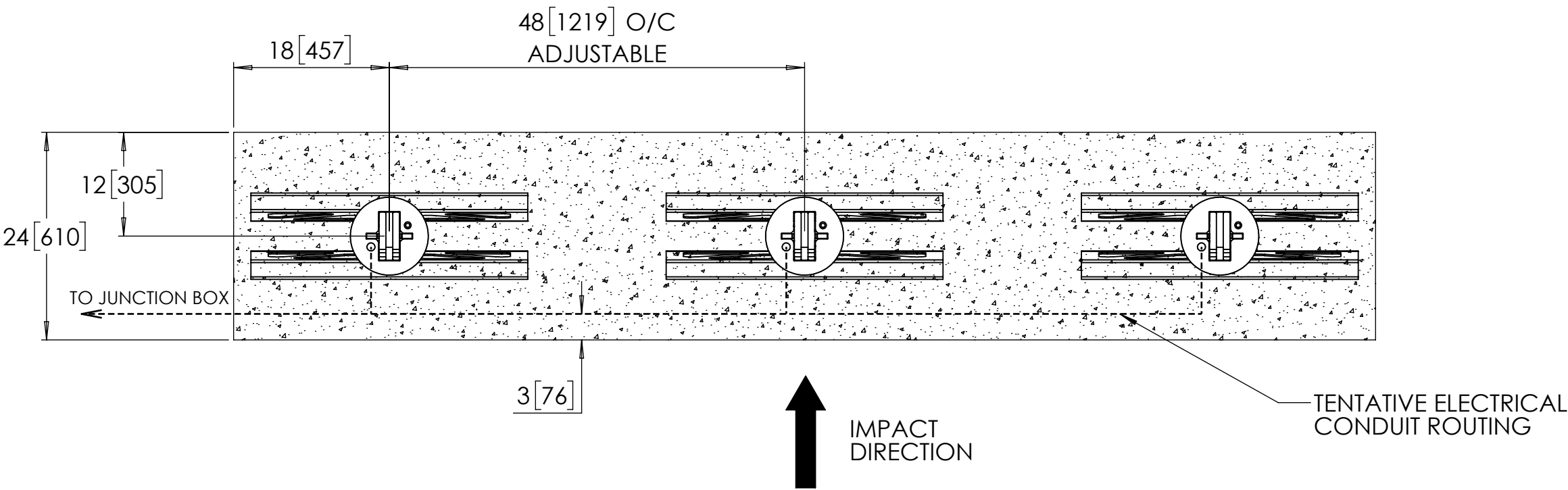
Unit 207, 6450 - 148 Street, Surrey, BC V3S 7G7, Canada
1-877-789-3245 info@reliance-foundry.com
www.reliance-foundry.com

TITLE:
S20 FIXED BOLLARD
INSTALLATION

	NAME	DATE	SIZE	DWG: 250-0027-PB	REV
DRAWN	JF	2025-03-11	C	PART: ASM: 250-0027	01A
REVIEWED	JL	2025-03-11	SCALE: 1:15		SHEET 1 OF 2

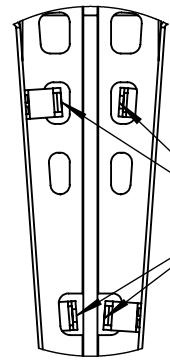
Crash-rated Bollard, Model R-1010-S20

TYPICAL BOLLARD ARRAY SHOWN (1 BOLLARD CAN WITHSTAND VEHICLE IMPACT ALONE)



NOTES:

- EMBEDMENT DETAILS ARE FOR REFERENCE ILLUSTRATION ONLY. MINIMUM FOUNDATION SIZES DEPEND ON LOCAL SOIL CONDITIONS, WEATHER CONDITIONS, AND ENGINEERING REQUIREMENTS.
- BOLLARD IS PROVIDED AS SHOWN, WITH PARTS LISTED BELOW. CONCRETE FOUNDATION AND/OR INSTALLATION NOT PROVIDED BY RELIANCE FOUNDRY.
- THIS DRAWING IS NOT DRAWN TO SCALE. DIMENSIONS PROVIDED HEREIN IS FOR REFERENCE ONLY. PLEASE CONSULT RELIANCE FOUNDRY SALES PROFESSIONALS IF ANY DIMENSION IS CRITICAL TO YOUR PARTICULAR INSTALLATION.
- RELIANCE FOUNDRY RESERVES THE RIGHT TO AMEND DESIGN AND SPECIFICATIONS WITHOUT PRIOR NOTICE FOR PRODUCT IMPROVEMENT.



KNOCK THE TABS (2X TYP.) OF EACH ITEM 2 INTO THE SECOND AND FOURTH CUTOUTS OF ITEM 1

DETAIL A

ITEM	QTY	PART NUMBER	DESCRIPTION	MATERIAL	INDIVIDUAL WEIGHT (LB)
1	3	250-0027	S20 FIXED BOLLARD ASSEMBLY	STEEL	178
2	6	100-0097	FOUNDATION REINFORCEMENT BRACKET	STEEL	22



General Description:

The Vector S20 Fixed Bollard offers crash-rated protection against vehicle collisions while maintaining a modern, stylish appearance. This ASTM F3016-19 S20 certified bollard is designed for reliable storefront safety with streamlined installation. Its curved profile and side flanges enhance durability, while the no-rebar design ensures faster, cost-effective setup.

Specifications:

Total Height: 69" [1753 mm]

Height Above Grade: 36" [914 mm]

Height Below Grade: 33" [838 mm]

Weight: 223 lbs [101 kg]

Material: Steel

Finish: Hot-dip Galvanised

For more information on bollard installation, please visit:
<https://www.reliance-foundry.com/bollard/vector-fixed-installation>



Unit 207, 6450 - 148 Street, Surrey, BC V3S 7G7, Canada
1-877-789-3245 info@reliance-foundry.com
www.reliance-foundry.com

TITLE:

S20 FIXED BOLLARD
INSTALLATION

	NAME	DATE	SIZE	DWG:	250-0027-PB	REV
DRAWN	JF	2025-03-11	C	PART:	ASM: 250-0027	01A
REVIEWED	JL	2025-03-11	SCALE:	1:15		SHEET 2 OF 2