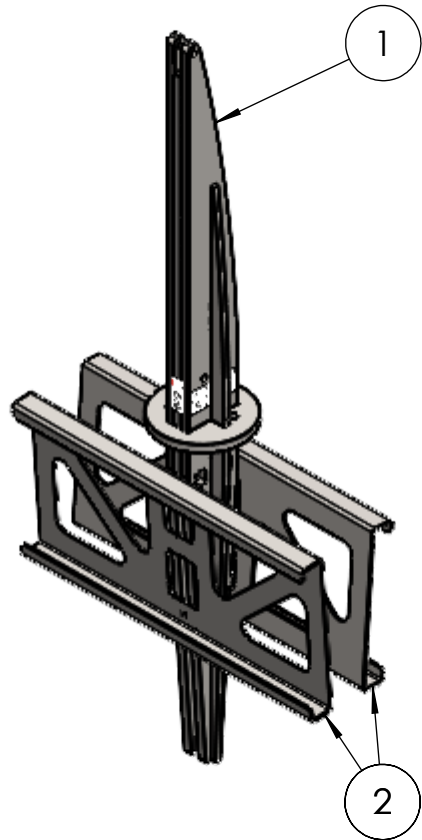
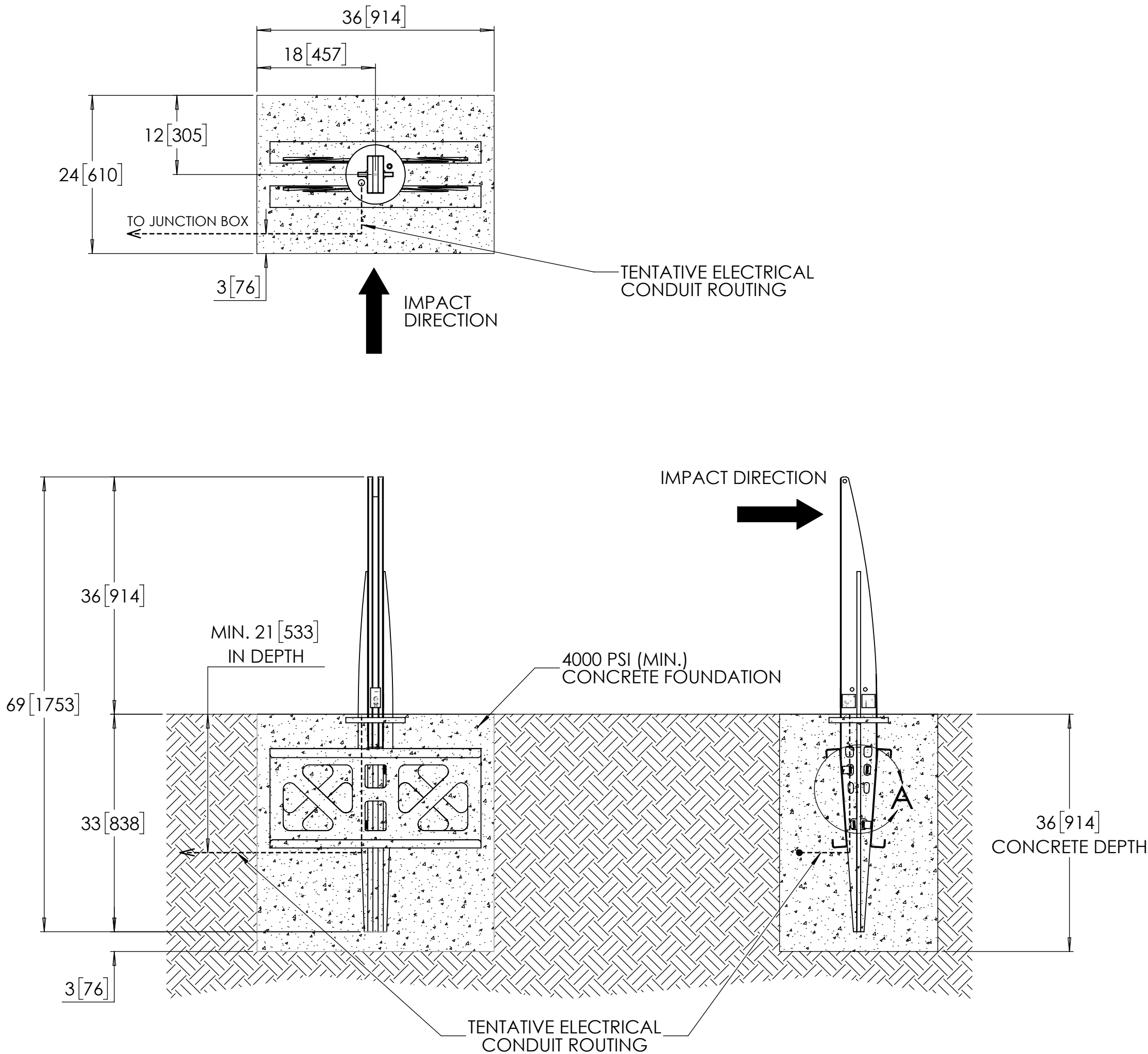


Vector S20 Patriot Crash-Rated Bollard – R-1010-S20



General Description:

Fabricated entirely in U.S. facilities, the Vector S20 Patriot Bollard offers certified protection against vehicle collisions while maintaining a modern, stylish appearance. This ASTM S20 P1 certified storefront safety bollard is designed to provide reliable protection with streamlined installation. Its curved profile and side flanges enhance durability, while the no-rebar design ensures faster, cost-effective setup. Domestic sourcing provides faster turnaround times and reduced shipping cost while maintaining Buy America compliance.

Specifications:

Total Height: 69" [1753 mm]
Height Above Grade: 36" [914 mm]
Height Below Grade: 33" [838 mm]
Weight: 223 lbs [101 kg]
Material: Steel

Finish Options:

- Hot-dip Galvanised
- Primed Black

For more information on bollard installation, please visit:
<https://www.reliance-foundry.com/bollard/vector-fixed-installation>



NOTES:

- EMBEDMENT DETAILS ARE FOR REFERENCE ILLUSTRATION ONLY. MINIMUM FOUNDATION SIZES DEPEND ON LOCAL SOIL CONDITIONS, WEATHER CONDITIONS, AND ENGINEERING REQUIREMENTS.
- BOLLARD IS PROVIDED AS SHOWN, WITH PARTS LISTED BELOW. CONCRETE FOUNDATION AND/OR INSTALLATION NOT PROVIDED BY RELIANCE FOUNDRY.
- THIS DRAWING IS NOT DRAWN TO SCALE. DIMENSIONS PROVIDED HEREIN IS FOR REFERENCE ONLY. PLEASE CONSULT RELIANCE FOUNDRY SALES PROFESSIONALS IF ANY DIMENSION IS CRITICAL TO YOUR PARTICULAR INSTALLATION.
- RELIANCE FOUNDRY RESERVES THE RIGHT TO AMEND DESIGN AND SPECIFICATIONS WITHOUT PRIOR NOTICE FOR PRODUCT IMPROVEMENT.

ITEM	QTY	PART NUMBER	DESCRIPTION	MATERIAL	INDIVIDUAL WEIGHT (LB)
1	1	2500027	S20 FIXED BOLLARD ASSEMBLY	STEEL	178
2	2	1000097	FOUNDATION REINFORCEMENT BRACKET	STEEL	22



Unit 207, 6450 - 148 Street, Surrey, BC V3S 7G7, Canada
1-877-789-3245 info@reliance-foundry.com
www.reliance-foundry.com

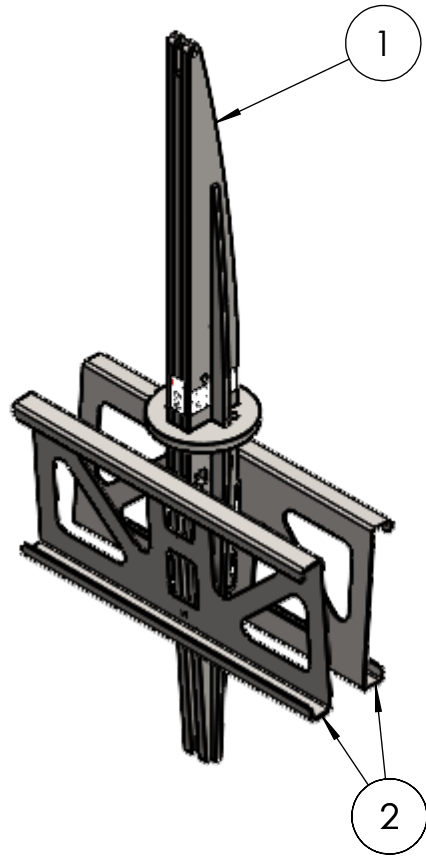
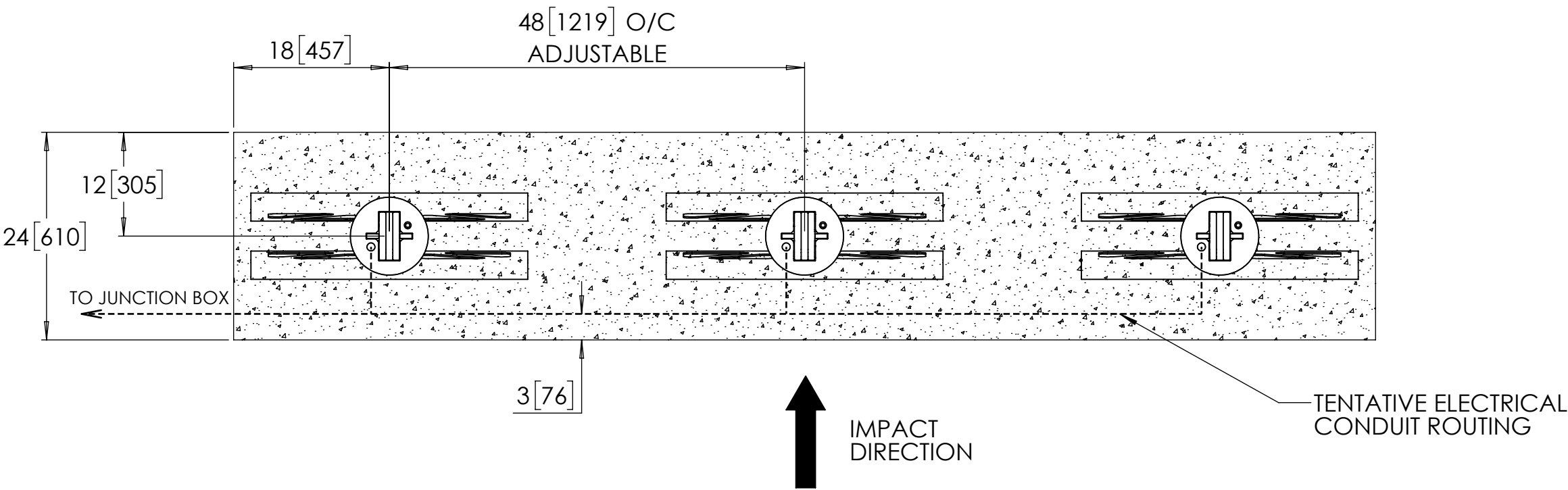
TITLE:

S20 FIXED BOLLARD
INSTALLATION

	NAME	DATE	SIZE	DWG:	2500027-01	REV
DRAWN	JF	2025-07-14	C	PART:		01B
REVIEWED	MS	2025-07-14	SCALE:	1:15	ASM: 2500027	

Vector S20 Patriot Crash-Rated Bollard – R-1010-S20

TYPICAL BOLLARD ARRAY SHOWN (1 BOLLARD CAN WITHSTAND VEHICLE IMPACT ALONE)



General Description:

Fabricated entirely in U.S. facilities, the Vector S20 Patriot Bollard offers certified protection against vehicle collisions while maintaining a modern, stylish appearance. This ASTM S20 P1 certified storefront safety bollard is designed to provide reliable protection with streamlined installation. Its curved profile and side flanges enhance durability, while the no-rebar design ensures faster, cost-effective setup. Domestic sourcing provides faster turnaround times and reduced shipping cost while maintaining Buy America compliance.

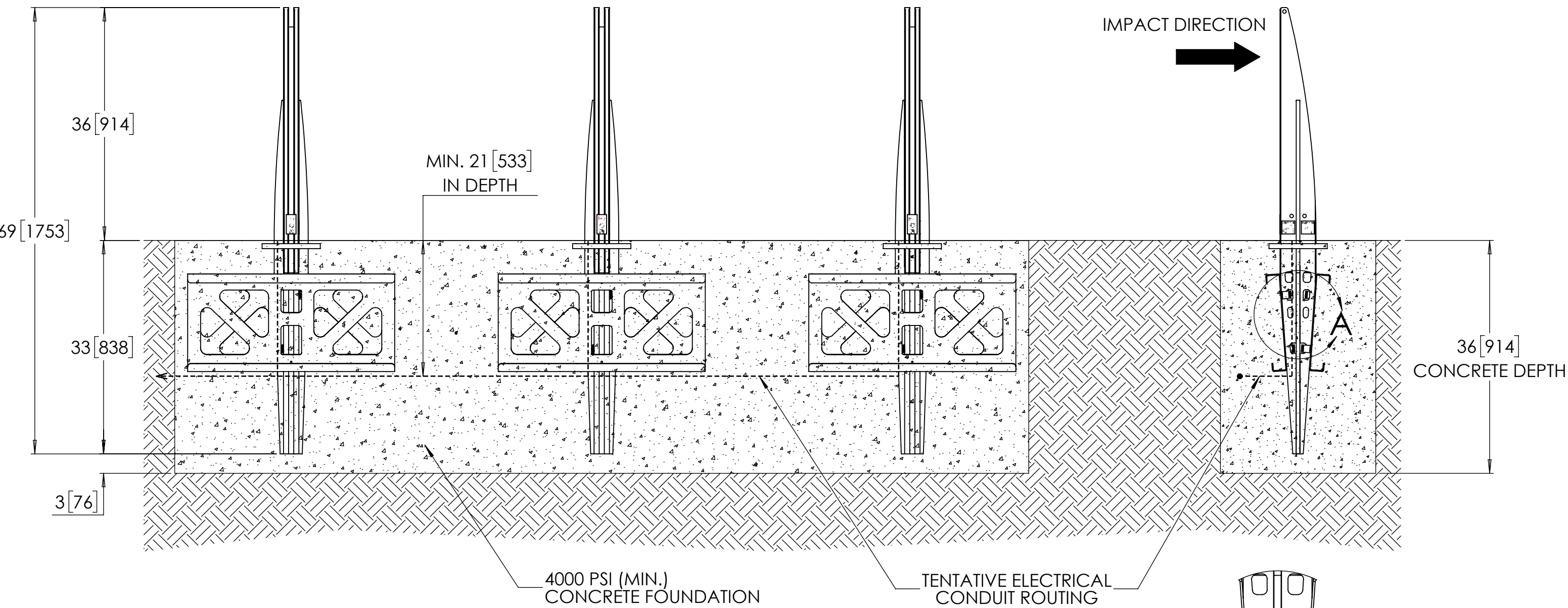
Specifications:

Total Height: 69" [1753 mm]
Height Above Grade: 36" [914 mm]
Height Below Grade: 33" [838 mm]
Weight: 223 lbs [101 kg]
Material: Steel

Finish Options:

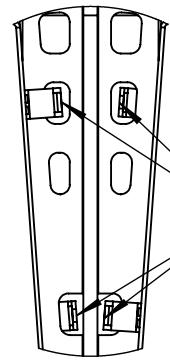
- Hot-dip Galvanised
- Primed Black

For more information on bollard installation, please visit:
<https://www.reliance-foundry.com/bollard/vector-fixed-installation>



NOTES:

- EMBEDMENT DETAILS ARE FOR REFERENCE ILLUSTRATION ONLY. MINIMUM FOUNDATION SIZES DEPEND ON LOCAL SOIL CONDITIONS, WEATHER CONDITIONS, AND ENGINEERING REQUIREMENTS.
- BOLLARD IS PROVIDED AS SHOWN, WITH PARTS LISTED BELOW. CONCRETE FOUNDATION AND/OR INSTALLATION NOT PROVIDED BY RELIANCE FOUNDRY.
- THIS DRAWING IS NOT DRAWN TO SCALE. DIMENSIONS PROVIDED HEREIN IS FOR REFERENCE ONLY. PLEASE CONSULT RELIANCE FOUNDRY SALES PROFESSIONALS IF ANY DIMENSION IS CRITICAL TO YOUR PARTICULAR INSTALLATION.
- RELIANCE FOUNDRY RESERVES THE RIGHT TO AMEND DESIGN AND SPECIFICATIONS WITHOUT PRIOR NOTICE FOR PRODUCT IMPROVEMENT.



KNOCK THE TABS (2X TYP.) OF EACH ITEM 2 INTO THE SECOND AND FOURTH CUTOUTS OF ITEM 1

DETAIL A

ITEM	QTY	PART NUMBER	DESCRIPTION	MATERIAL	INDIVIDUAL WEIGHT (LB)
1	3	2500027	S20 FIXED BOLLARD ASSEMBLY	STEEL	178
2	6	1000097	FOUNDATION REINFORCEMENT BRACKET	STEEL	22



Unit 207, 6450 - 148 Street, Surrey, BC V3S 7G7, Canada
1-877-789-3245 info@reliance-foundry.com
www.reliance-foundry.com

TITLE:

S20 FIXED BOLLARD
INSTALLATION

	NAME	DATE	SIZE	DWG:	2500027-01	REV
DRAWN	JF	2025-07-14	C	PART:		01B
REVIEWED	MS	2025-07-14	SCALE:	1:15	ASM:	2500027