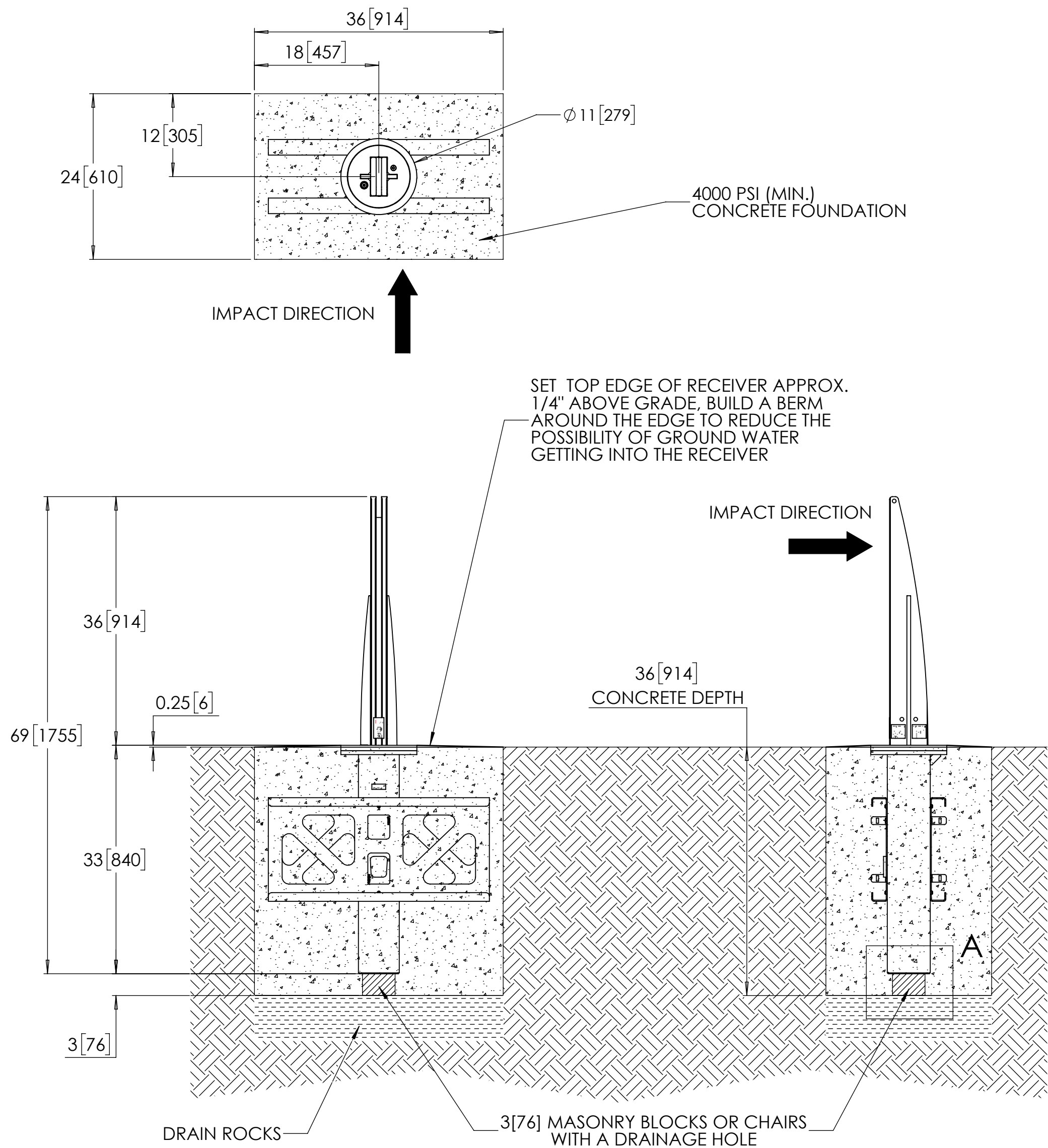


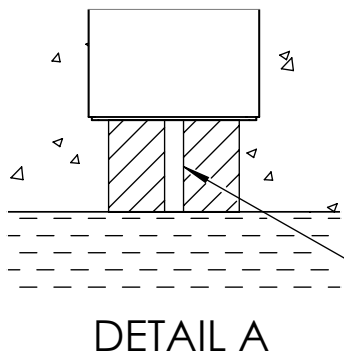
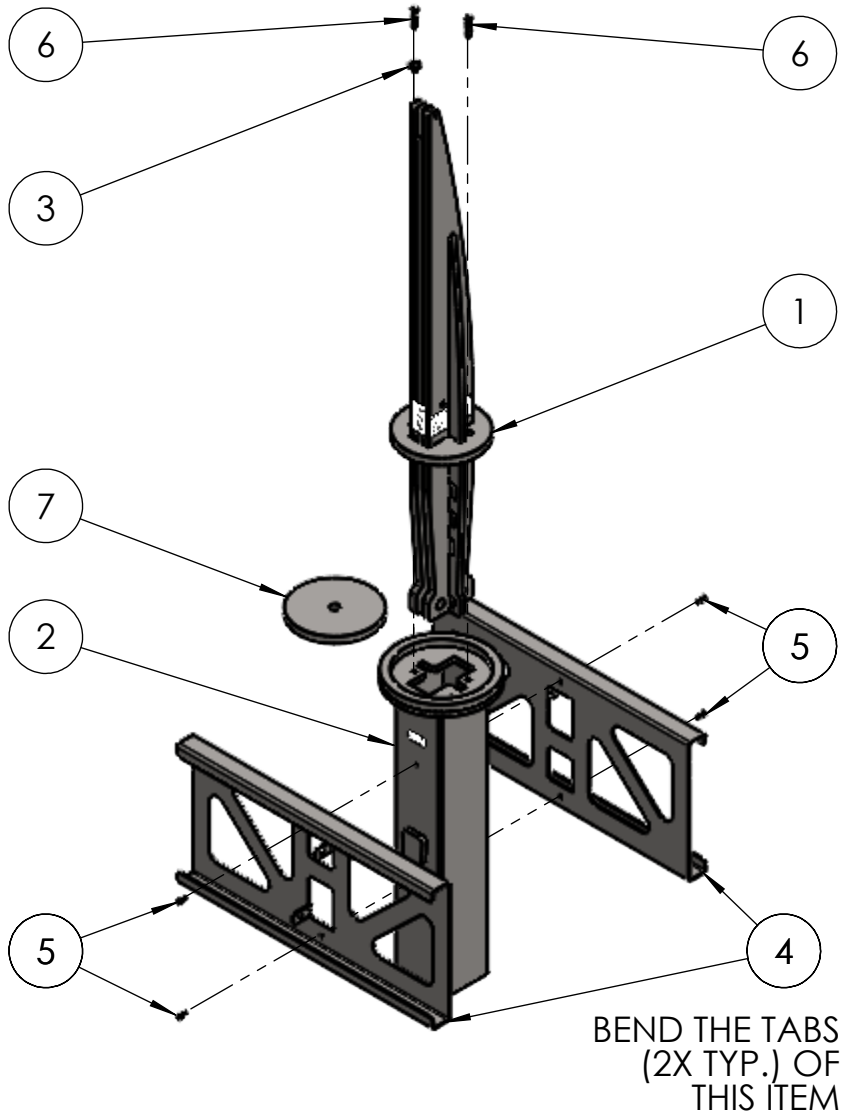
Crash-rated Bollard, Model R-1010-S20-R



NOTES:

- EMBEDMENT DETAILS ARE FOR REFERENCE ILLUSTRATION ONLY. MINIMUM FOUNDATION SIZES DEPEND ON LOCAL SOIL CONDITIONS, WEATHER CONDITIONS, AND ENGINEERING REQUIREMENTS.
- BOLLARD IS PROVIDED AS SHOWN, WITH PARTS LISTED BELOW. CONCRETE FOUNDATION AND/OR INSTALLATION NOT PROVIDED BY RELIANCE FOUNDRY.
- THIS DRAWING IS NOT DRAWN TO SCALE. DIMENSIONS PROVIDED HEREIN IS FOR REFERENCE ONLY. PLEASE CONSULT RELIANCE FOUNDRY SALES PROFESSIONALS IF ANY DIMENSION IS CRITICAL TO YOUR PARTICULAR INSTALLATION.
- RELIANCE FOUNDRY RESERVES THE RIGHT TO AMEND DESIGN AND SPECIFICATIONS WITHOUT PRIOR NOTICE FOR PRODUCT IMPROVEMENT.

TOOL REQUIRED: T45 TORX KEY					
ITEM	QTY.	PART NUMBER	DESCRIPTION	MATERIAL	INDIVIDUAL WEIGHT
1	1	250-0028	S20 REMOVABLE BOLLARD ASSEMBLY	STEEL	163 LB
2	1	250-0029	S20 RECEIVER ASSEMBLY	STEEL	68 LB
3	1	100-0063	BOLLARD FLANGE CONDUIT WASHER	PLASTIC	-
4	2	100-0097	FOUNDATION REINFORCEMENT BRACKET	STEEL	23 LB
5	4	150-0007	THREAD-FORMING SCREW - M6 - 20	STAINLESS STEEL	-
6	2	150-0008	TORX CSK SCREW - M10 - 50	STAINLESS STEEL	-
7	1	100-0076	S20 RECEIVER COVER (OPTIONAL)	STEEL	14 LB



General Description:

The Vector S20 Removable Bollard offers crash-rated defense against vehicle incursions and is certified to the ASTM F3016-19 S20 standard. Designed for locations requiring periodic clearance, this removable bollard provides robust protection with the convenience of easy installation and removal. Its no-rebar design ensures cost-efficient setup, while the modern aesthetic fits seamlessly into storefront environments.

Specifications:

Total Height: 69" [1753 mm]
Height Above Grade: 36" [914 mm]
Height Below Grade: 33" [840 mm]
Weight: 277 lbs [125 kg]
Material: Steel
Finish: Hot-dip Galvanised

For more information on bollard installation, please visit:
<https://www.reliance-foundry.com/bollard/vector-fixed-installation>



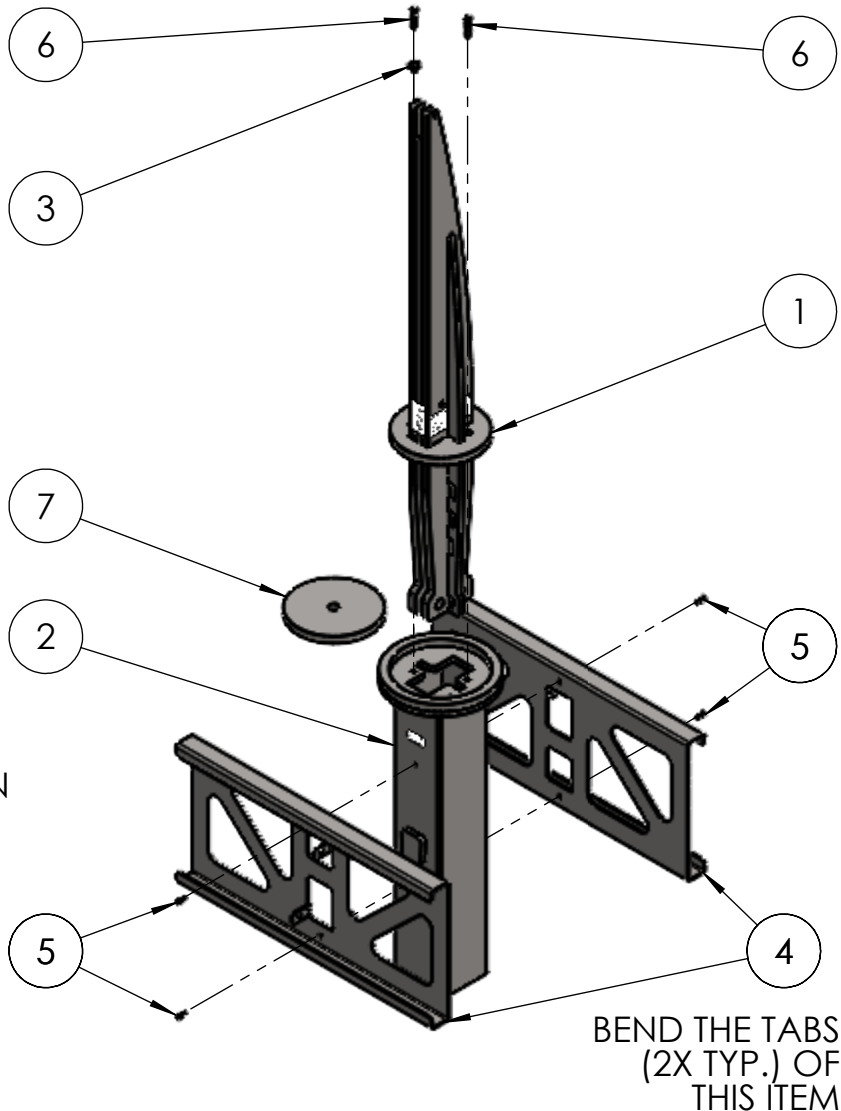
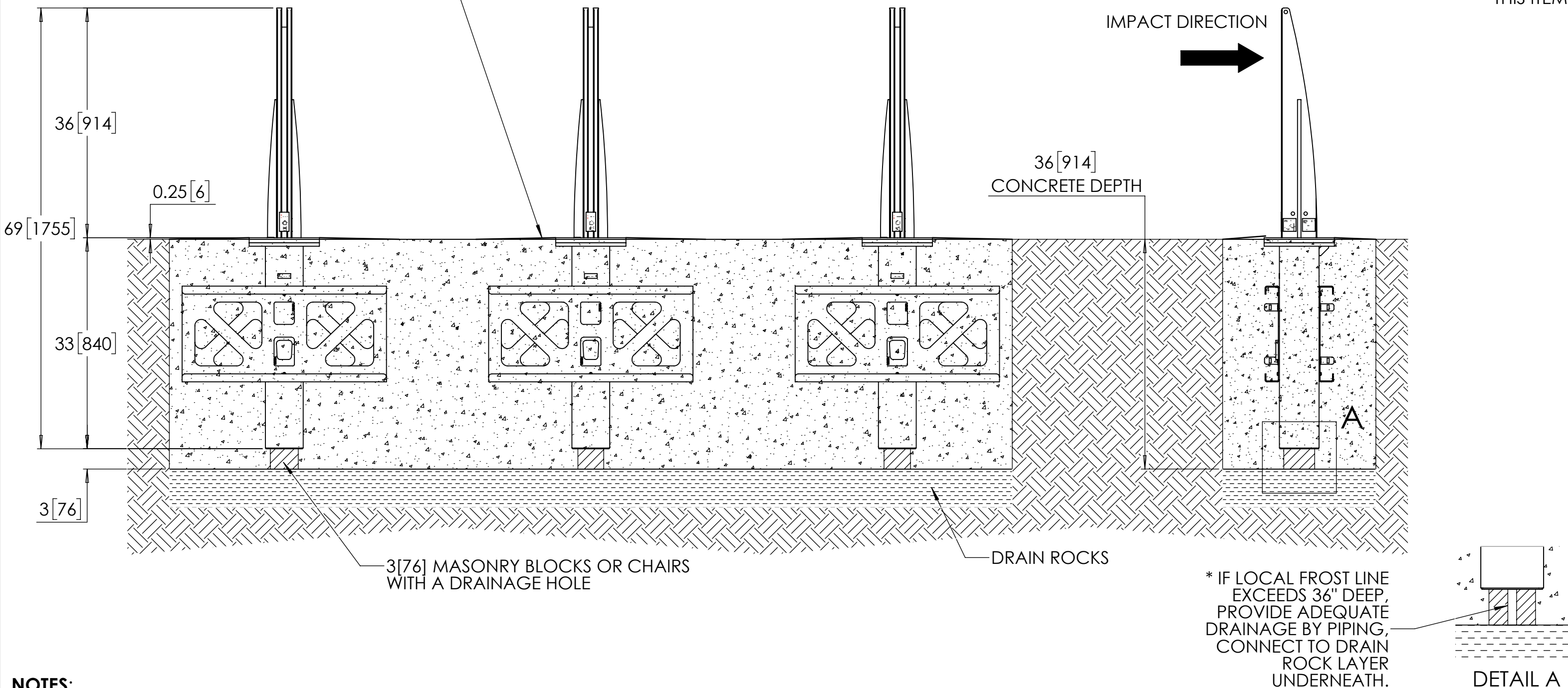
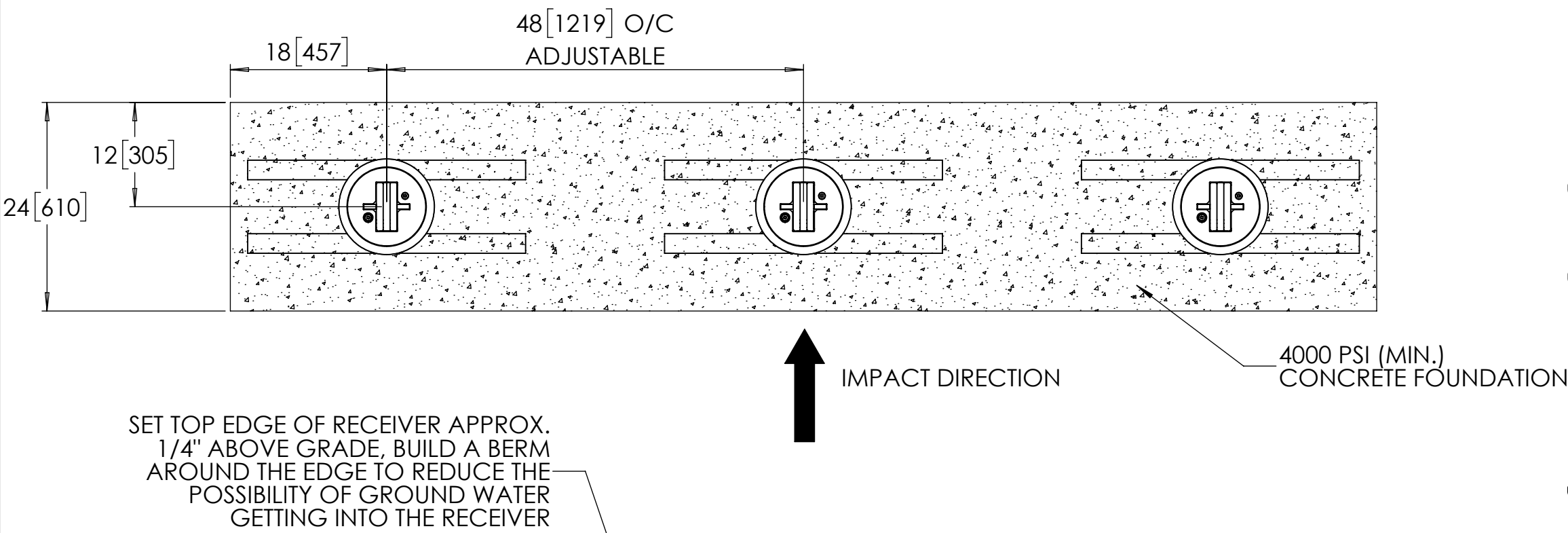
Unit 207, 6450 - 148 Street, Surrey, BC V3S 7G7, Canada
1-877-789-3245 info@reliance-foundry.com
www.reliance-foundry.com

TITLE:
S20 REMOVABLE BOLLARD
INSTALLATION

	NAME	DATE	SIZE	DWG:	250-0030-PB	REV
DRAWN	JF	2025-03-14	C	PART:		01A
REVIEWED	JL	2025-03-14	SCALE:	1:14	ASM: 250-0030	
						SHEET 1 OF 2

Crash-rated Bollard, Model R-1010-S20-R

TYPICAL BOLLARD ARRAY SHOWN (1 BOLLARD CAN WITHSTAND VEHICLE IMPACT ALONE)



General Description:

The Vector S20 Removable Bollard offers crash-rated defense against vehicle incursions and is certified to the ASTM F3016-19 S20 standard. Designed for locations requiring periodic clearance, this removable bollard provides robust protection with the convenience of easy installation and removal. Its no-rebar design ensures cost-efficient setup, while the modern aesthetic fits seamlessly into storefront environments.

Specifications:

Total Height: 69" [1753 mm]
Height Above Grade: 36" [914 mm]
Height Below Grade: 33" [840 mm]
Weight: 277 lbs [125 kg]
Material: Steel
Finish: Hot-dip Galvanised

For more information on bollard installation, please visit:
<https://www.reliance-foundry.com/bollard/vector-fixed-installation>



NOTES:

- EMBEDMENT DETAILS ARE FOR REFERENCE ILLUSTRATION ONLY. MINIMUM FOUNDATION SIZES DEPEND ON LOCAL SOIL CONDITIONS, WEATHER CONDITIONS, AND ENGINEERING REQUIREMENTS.
- BOLLARD IS PROVIDED AS SHOWN, WITH PARTS LISTED BELOW. CONCRETE FOUNDATION AND/OR INSTALLATION NOT PROVIDED BY RELIANCE FOUNDRY.
- THIS DRAWING IS NOT DRAWN TO SCALE. DIMENSIONS PROVIDED HEREIN IS FOR REFERENCE ONLY. PLEASE CONSULT RELIANCE FOUNDRY SALES PROFESSIONALS IF ANY DIMENSION IS CRITICAL TO YOUR PARTICULAR INSTALLATION.
- RELIANCE FOUNDRY RESERVES THE RIGHT TO AMEND DESIGN AND SPECIFICATIONS WITHOUT PRIOR NOTICE FOR PRODUCT IMPROVEMENT.

TOOL REQUIRED: T45 TORX KEY

ITEM	QTY.	PART NUMBER	DESCRIPTION	MATERIAL	INDIVIDUAL WEIGHT
1	3	250-0028	S20 REMOVABLE BOLLARD ASSEMBLY	STEEL	163 LB
2	3	250-0029	S20 RECEIVER ASSEMBLY	STEEL	68 LB
3	3	100-0063	BOLLARD FLANGE CONDUIT WASHER	PLASTIC	-
4	6	100-0097	FOUNDATION REINFORCEMENT BRACKET	STEEL	23 LB
5	12	150-0007	THREAD-FORMING SCREW - M6 - 20	STAINLESS STEEL	-
6	6	150-0008	TORX CSK SCREW - M10 - 50	STAINLESS STEEL	-
7	3	100-0076	S20 RECEIVER COVER (OPTIONAL)	STEEL	14 LB

COPYRIGHT RESERVED THIS PLAN DRAWING AND DESIGN ARE, AND AT ALL TIMES REMAIN, THE EXCLUSIVE PROPERTY OF RELIANCE FOUNDRY CO. LTD.

DO NOT SCALE DRAWING



Unit 207, 6450 - 148 Street, Surrey, BC V3S 7G7, Canada
1-877-789-3245 info@reliance-foundry.com
www.reliance-foundry.com

TITLE: S20 REMOVABLE BOLLARD INSTALLATION

	NAME	DATE	SIZE	DWG: 250-0030-PB	REV
DRAWN	JF	2025-03-14	C	PART: ASM: 250-0030	01A
REVIEWED	JL	2025-03-14	SCALE: 1:15		SHEET 2 OF 2