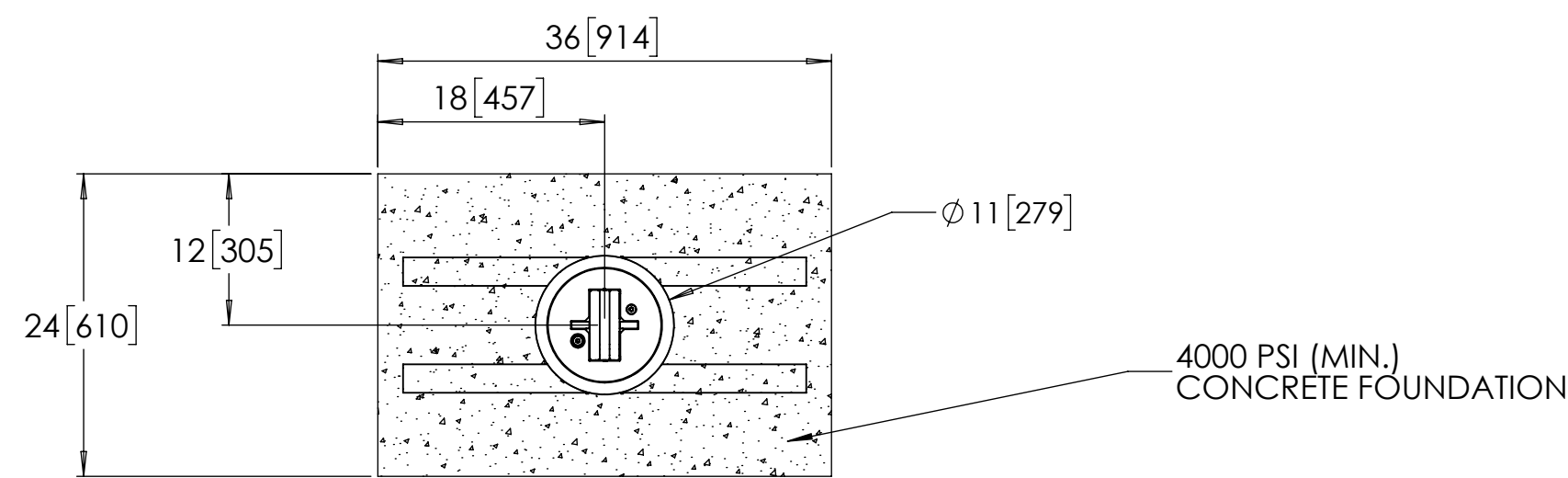
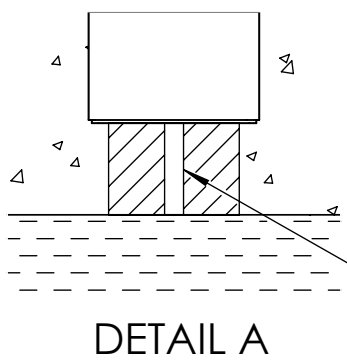
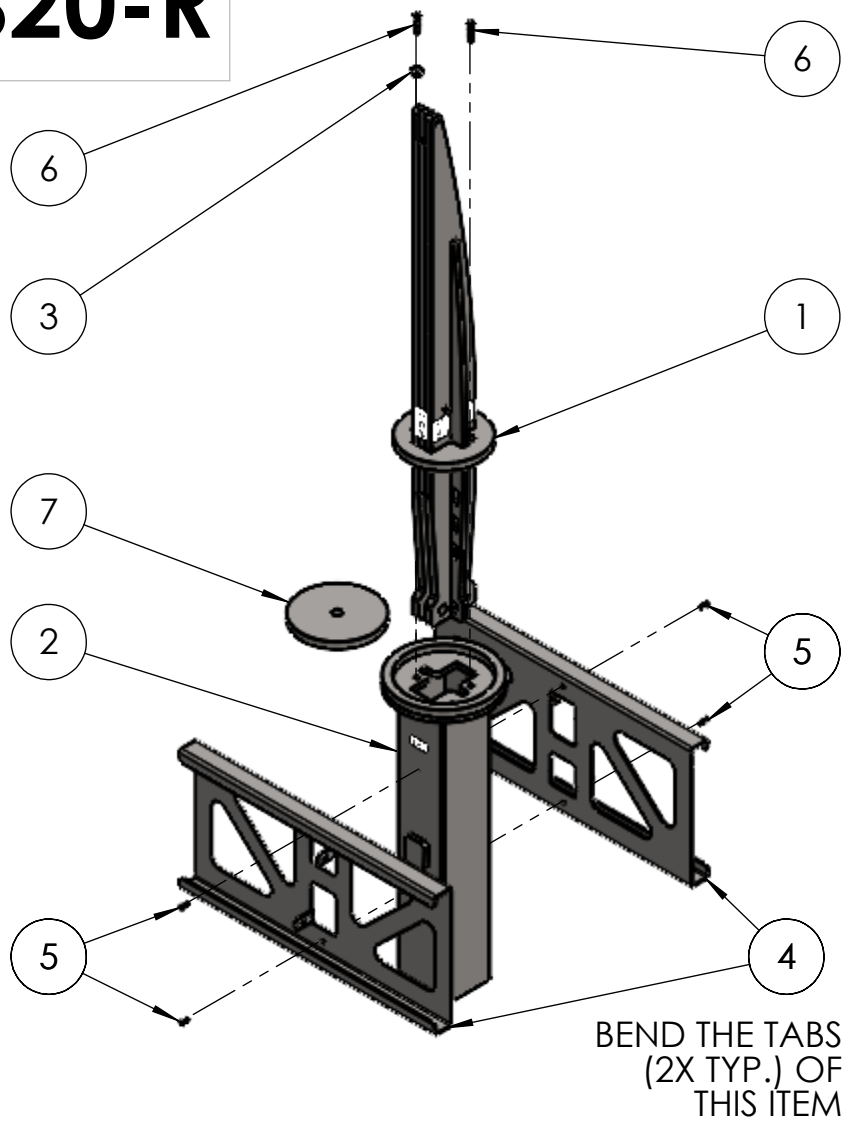
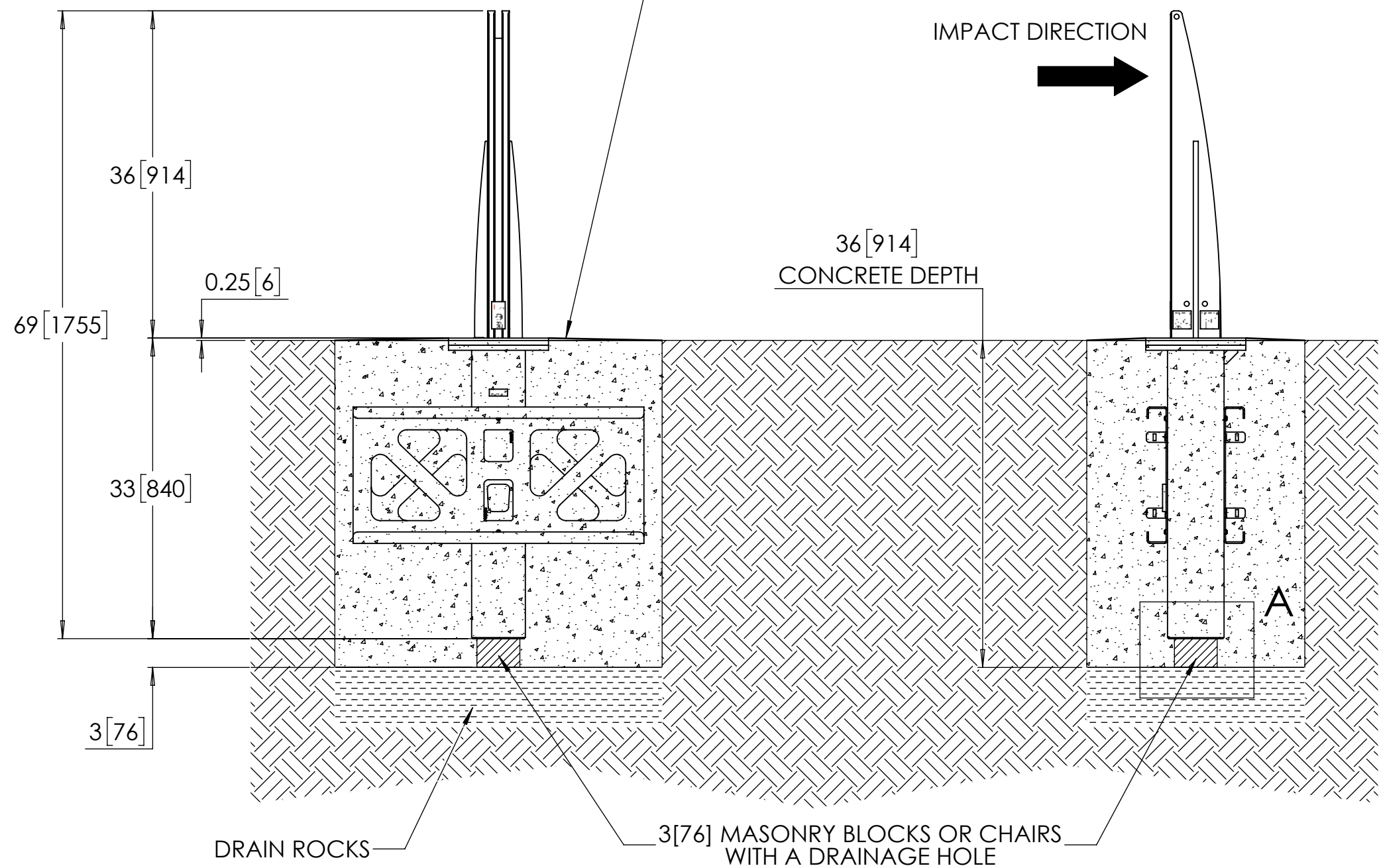


Vector S20 Patriot Crash-Rated Bollard – R-1010-S20-R



IMPACT DIRECTION

SET TOP EDGE OF RECEIVER APPROX. 1/4" ABOVE GRADE, BUILD A BERM AROUND THE EDGE TO REDUCE THE POSSIBILITY OF GROUND WATER GETTING INTO THE RECEIVER



* IF LOCAL FROST LINE EXCEEDS 36" DEEP, PROVIDE ADEQUATE DRAINAGE BY PIPING, CONNECT TO DRAIN ROCK LAYER UNDERNEATH.



General Description:

The made-in-America Vector S20 Patriot Removable Bollard offers crash-rated defense against vehicle incursions and is certified to the ASTM F3016 S20 P1 standard. Designed for locations requiring periodic clearance, this removable storefront safety bollard provides robust protection with the convenience of easy installation and removal. Its no-rebar design ensures cost-efficient setup, while the modern aesthetic fits seamlessly into any environment. U.S. production ensures Buy America compliance and quick distribution.

Specifications:

Total Height: 69" [1753 mm]
Height Above Grade: 36" [914 mm]
Height Below Grade: 33" [840 mm]
Weight: 277 lbs [125 kg]
Material: Steel

Finish Options:

- Hot-dip Galvanised
- Primed Black

For more information on bollard installation, please visit: <https://www.reliance-foundry.com/bollard/vector-fixed-installation>



NOTES:

- EMBEDMENT DETAILS ARE FOR REFERENCE ILLUSTRATION ONLY. MINIMUM FOUNDATION SIZES DEPEND ON LOCAL SOIL CONDITIONS, WEATHER CONDITIONS, AND ENGINEERING REQUIREMENTS.
- BOLLARD IS PROVIDED AS SHOWN, WITH PARTS LISTED BELOW. CONCRETE FOUNDATION AND/OR INSTALLATION NOT PROVIDED BY RELIANCE FOUNDRY.
- THIS DRAWING IS NOT DRAWN TO SCALE. DIMENSIONS PROVIDED HEREIN IS FOR REFERENCE ONLY. PLEASE CONSULT RELIANCE FOUNDRY SALES PROFESSIONALS IF ANY DIMENSION IS CRITICAL TO YOUR PARTICULAR INSTALLATION.
- RELIANCE FOUNDRY RESERVES THE RIGHT TO AMEND DESIGN AND SPECIFICATIONS WITHOUT PRIOR NOTICE FOR PRODUCT IMPROVEMENT.

TOOL REQUIRED: T45 TORX KEY

| ITEM | QTY. | PART NUMBER | DESCRIPTION | MATERIAL | INDIVIDUAL WEIGHT |
|------|------|-------------|----------------------------------|-----------------|-------------------|
| 1 | 1 | 2500028 | S20 REMOVABLE BOLLARD ASSEMBLY | STEEL | 163 LB |
| 2 | 1 | 2500029 | S20 RECEIVER ASSEMBLY | STEEL | 68 LB |
| 3 | 1 | 1000063 | BOLLARD FLANGE CONDUIT WASHER | PLASTIC | - |
| 4 | 2 | 1000097 | FOUNDATION REINFORCEMENT BRACKET | STEEL | 23 LB |
| 5 | 4 | 1500007 | THREAD-FORMING SCREW - M6 - 20 | STAINLESS STEEL | - |
| 6 | 2 | 1500008 | TORX CSK SCREW - M10 - 50 | STAINLESS STEEL | - |
| 7 | 1 | 1000076 | S20 RECEIVER COVER (OPTIONAL) | STEEL | 14 LB |

COPYRIGHT RESERVED THIS PLAN DRAWING AND DESIGN ARE, AND AT ALL TIMES REMAIN, THE EXCLUSIVE PROPERTY OF RELIANCE FOUNDRY CO. LTD. DO NOT SCALE DRAWING



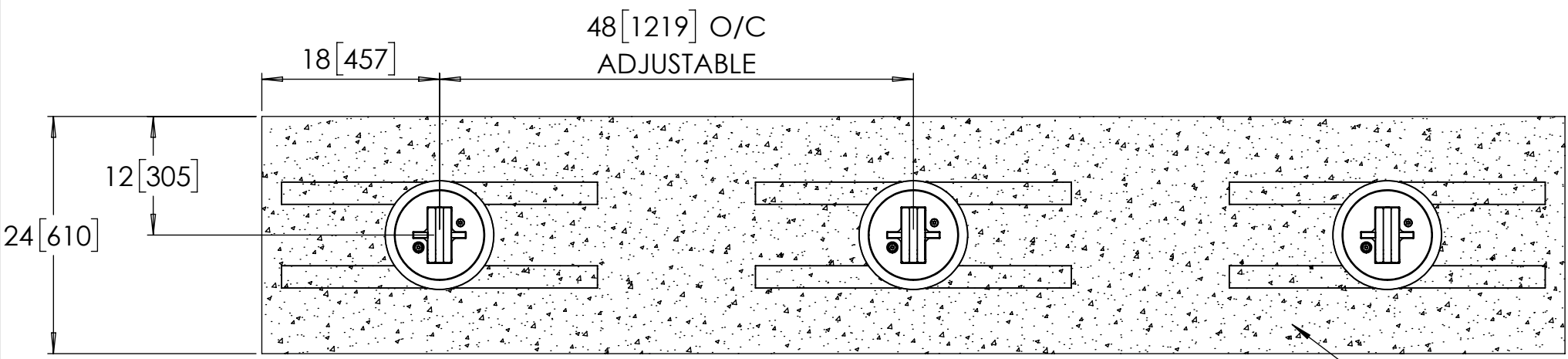
Unit 207, 6450 - 148 Street, Surrey, BC V3S 7G7, Canada
1-877-789-3245 info@reliance-foundry.com
www.reliance-foundry.com

TITLE: S20 REMOVABLE BOLLARD INSTALLATION

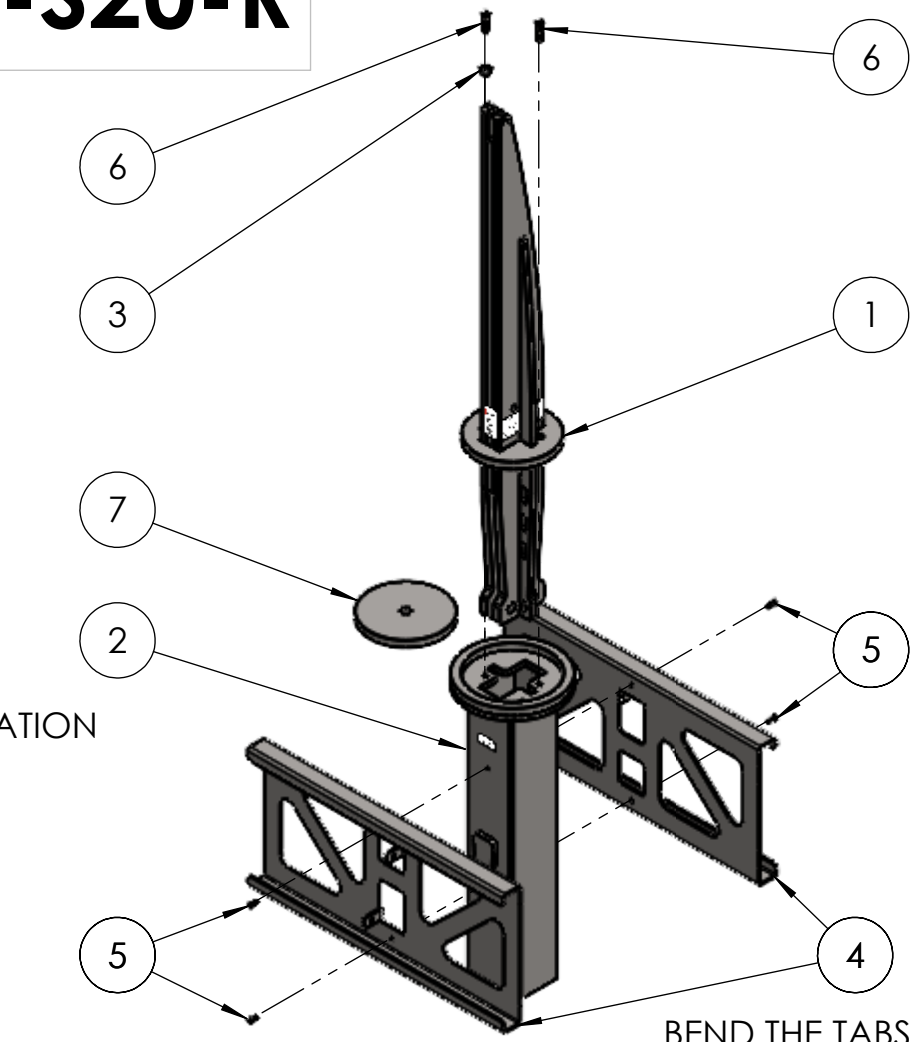
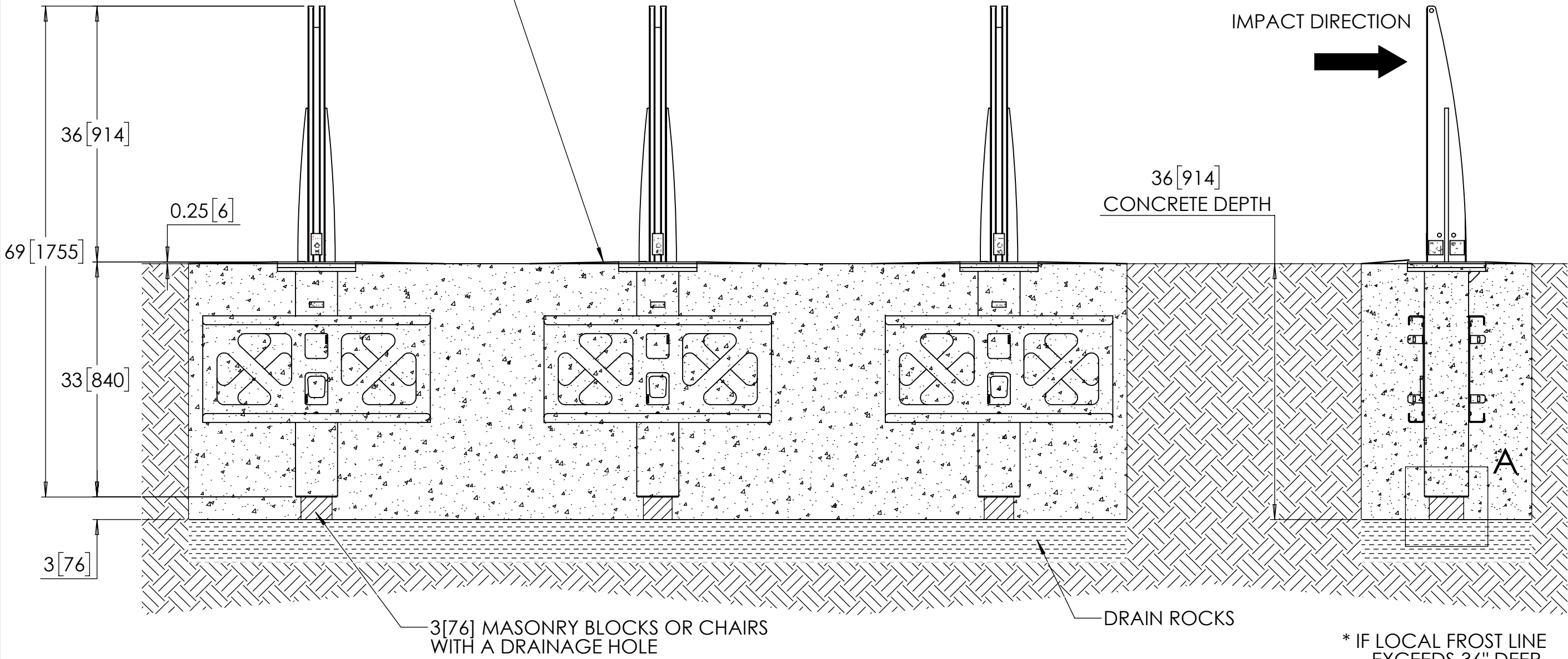
| | NAME | DATE | SIZE | DWG: 2500030-01 | REV |
|----------|------|------------|-------------|--------------------|--------------|
| DRAWN | JF | 2025-07-14 | C | PART: ASM: 2500030 | 01B |
| REVIEWED | MS | 2025-07-14 | SCALE: 1:14 | | SHEET 1 OF 2 |

Vector S20 Patriot Crash-Rated Bollard – R-1010-S20-R

TYPICAL BOLLARD ARRAY SHOWN (1 BOLLARD CAN WITHSTAND VEHICLE IMPACT ALONE)



SET TOP EDGE OF RECEIVER APPROX. 1/4" ABOVE GRADE, BUILD A BERM AROUND THE EDGE TO REDUCE THE POSSIBILITY OF GROUND WATER GETTING INTO THE RECEIVER



IMPACT DIRECTION



* IF LOCAL FROST LINE EXCEEDS 36" DEEP, PROVIDE ADEQUATE DRAINAGE BY PIPING, CONNECT TO DRAIN ROCK LAYER UNDERNEATH.

DETAIL A

NOTES:

- EMBEDMENT DETAILS ARE FOR REFERENCE ILLUSTRATION ONLY. MINIMUM FOUNDATION SIZES DEPEND ON LOCAL SOIL CONDITIONS, WEATHER CONDITIONS, AND ENGINEERING REQUIREMENTS.
- BOLLARD IS PROVIDED AS SHOWN, WITH PARTS LISTED BELOW. CONCRETE FOUNDATION AND/OR INSTALLATION NOT PROVIDED BY RELIANCE FOUNDRY.
- THIS DRAWING IS NOT DRAWN TO SCALE. DIMENSIONS PROVIDED HEREIN IS FOR REFERENCE ONLY. PLEASE CONSULT RELIANCE FOUNDRY SALES PROFESSIONALS IF ANY DIMENSION IS CRITICAL TO YOUR PARTICULAR INSTALLATION.
- RELIANCE FOUNDRY RESERVES THE RIGHT TO AMEND DESIGN AND SPECIFICATIONS WITHOUT PRIOR NOTICE FOR PRODUCT IMPROVEMENT.

| TOOL REQUIRED: T45 TORX KEY | | | | | | |
|-----------------------------|------|-------------|----------------------------------|-----------------|-------------------|--|
| ITEM | QTY. | PART NUMBER | DESCRIPTION | MATERIAL | INDIVIDUAL WEIGHT | |
| 1 | 3 | 2500028 | S20 REMOVABLE BOLLARD ASSEMBLY | STEEL | 163 LB | |
| 2 | 3 | 2500029 | S20 RECEIVER ASSEMBLY | STEEL | 68 LB | |
| 3 | 3 | 1000063 | BOLLARD FLANGE CONDUIT WASHER | PLASTIC | - | |
| 4 | 6 | 1000097 | FOUNDATION REINFORCEMENT BRACKET | STEEL | 23 LB | |
| 5 | 12 | 1500007 | THREAD-FORMING SCREW - M6 - 20 | STAINLESS STEEL | - | |
| 6 | 6 | 1500008 | TORX CSK SCREW - M10 - 50 | STAINLESS STEEL | - | |
| 7 | 3 | 1000076 | S20 RECEIVER COVER (OPTIONAL) | STEEL | 14 LB | |

COPYRIGHT RESERVED THIS PLAN DRAWING AND DESIGN ARE, AND AT ALL TIMES REMAIN, THE EXCLUSIVE PROPERTY OF RELIANCE FOUNDRY CO. LTD.

DO NOT SCALE DRAWING



General Description:

The made-in-America Vector S20 Patriot Removable Bollard offers crash-rated defense against vehicle incursions and is certified to the ASTM F3016 S20 P1 standard. Designed for locations requiring periodic clearance, this removable storefront safety bollard provides robust protection with the convenience of easy installation and removal. Its no-rebar design ensures cost-efficient setup, while the modern aesthetic fits seamlessly into any environment. U.S. production ensures Buy America compliance and quick distribution.

Specifications:

Total Height: 69" [1753 mm]

Height Above Grade: 36" [914 mm]

Height Below Grade: 33" [840 mm]

Weight: 277 lbs [125 kg]

Material: Steel

Finish Options:

- Hot-dip Galvanised
- Primed Black

For more information on bollard installation, please visit: <https://www.reliance-foundry.com/bollard/vector-fixed-installation>



Unit 207, 6450 - 148 Street, Surrey, BC V3S 7G7, Canada
1-877-789-3245 info@reliance-foundry.com
www.reliance-foundry.com

TITLE: S20 REMOVABLE BOLLARD INSTALLATION

| | NAME | DATE | SIZE | DWG: 2500030-01 | REV |
|----------|------|------------|-------------|--------------------|--------------|
| DRAWN | JF | 2025-07-14 | C | PART: ASM: 2500030 | 01B |
| REVIEWED | MS | 2025-07-14 | SCALE: 1:15 | | SHEET 2 OF 2 |