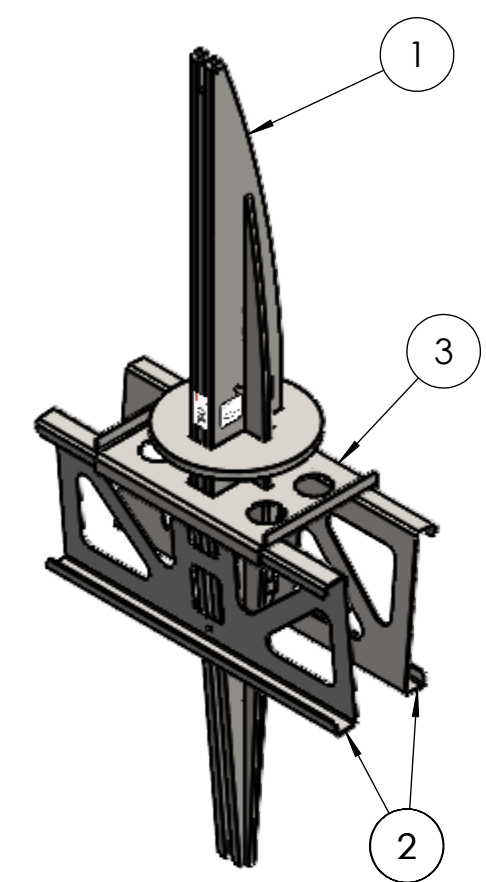
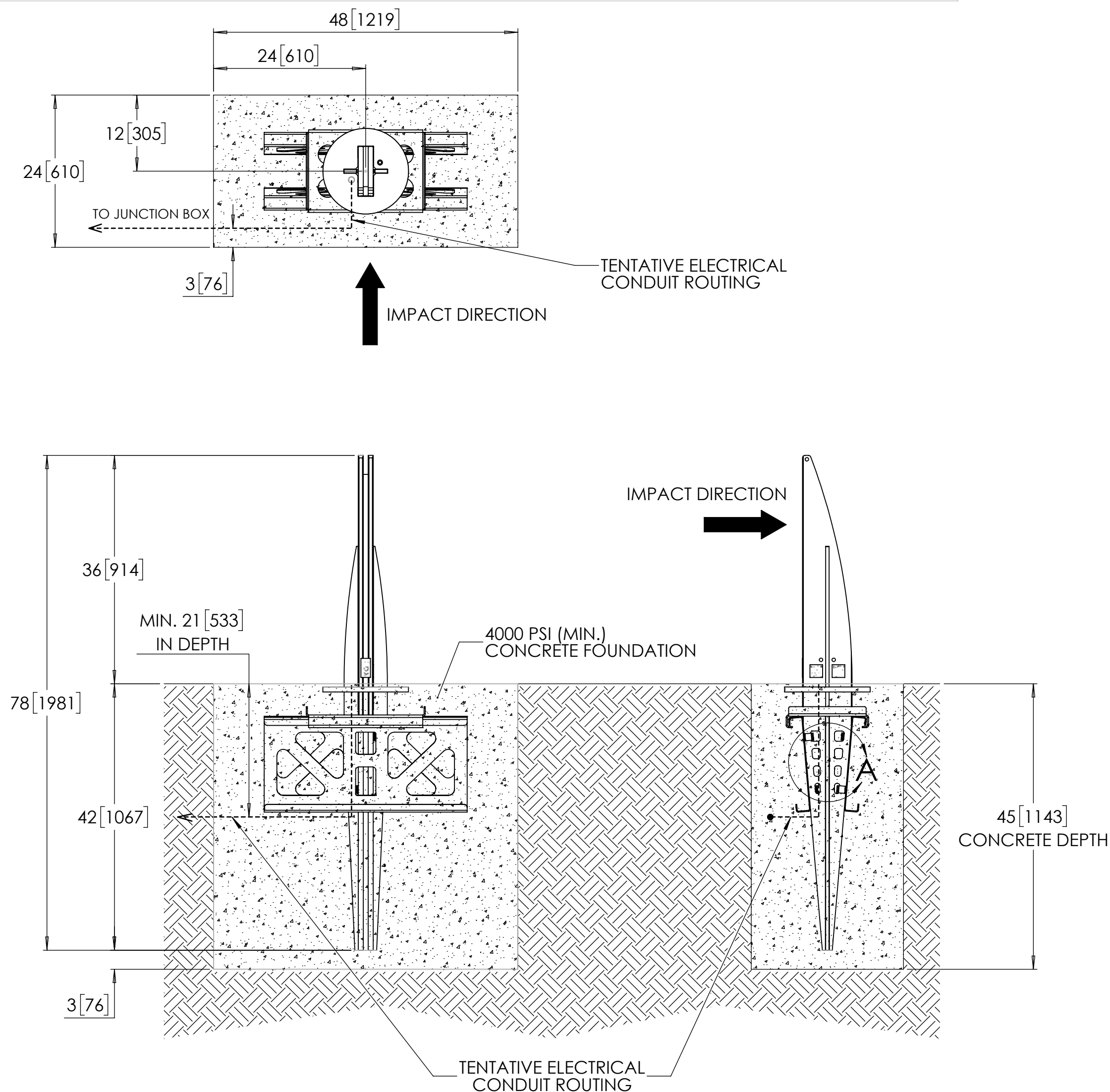


Crash-rated Bollard, Model R-1010-S30



**General Description:**

Engineered for superior resistance, the Vector S30 Bollard is our ultimate solution for storefront safety. Its advanced design, featuring a curved profile and side flanges, provides maximum strength and impact distribution. Like its counterparts, the Vector S30 Bollard is designed for easy, cost-effective installation, without the need for rebar. Successfully tested and certified to ASTM F3016 S30 P2 with a penetration distance of just 1.97 feet, the Vector S30 Bollard offers storefront owners unmatched protection against vehicle intrusions.

- Specifications:**
- Total Height: 78" [1981 mm]
  - Height Above Grade: 36" [914 mm]
  - Height Below Grade: 42" [1067 mm]
  - Weight: 340 lbs [154 kg]
  - Material: Steel
  - Finish: Hot-dip Galvanised

For more information on bollard installation, please visit: <https://www.reliance-foundry.com/bollard/vector-fixed-installation>



- NOTES:**
- EMBEDMENT DETAILS ARE FOR REFERENCE ILLUSTRATION ONLY. MINIMUM FOUNDATION SIZES DEPEND ON LOCAL SOIL CONDITIONS, WEATHER CONDITIONS, AND ENGINEERING REQUIREMENTS.
  - BOLLARD IS PROVIDED AS SHOWN, WITH PARTS LISTED BELOW. CONCRETE FOUNDATION AND/OR INSTALLATION NOT PROVIDED BY RELIANCE FOUNDRY.
  - THIS DRAWING IS NOT DRAWN TO SCALE. DIMENSIONS PROVIDED HEREIN IS FOR REFERENCE ONLY. PLEASE CONSULT RELIANCE FOUNDRY SALES PROFESSIONALS IF ANY DIMENSION IS CRITICAL TO YOUR PARTICULAR INSTALLATION.
  - RELIANCE FOUNDRY RESERVES THE RIGHT TO AMEND DESIGN AND SPECIFICATIONS WITHOUT PRIOR NOTICE FOR PRODUCT IMPROVEMENT.

ITEM	QTY	PART NUMBER	DESCRIPTION	MATERIAL	INDIVIDUAL WEIGHT (LB)
1	1	250-0033	S30 FIXED BOLLARD ASSEMBLY	STEEL	278
2	2	100-0097	FOUNDATION REINFORCEMENT BRACKET	STEEL	22
3	1	100-0098	FOUNDATION REINFORCEMENT BRACKET - TOP	STEEL	17

RELIANCE FOUNDRY  
SINCE 1925

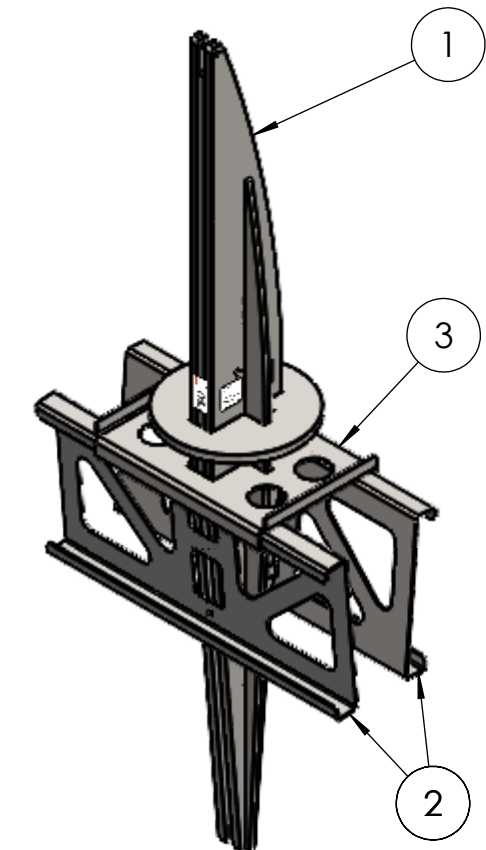
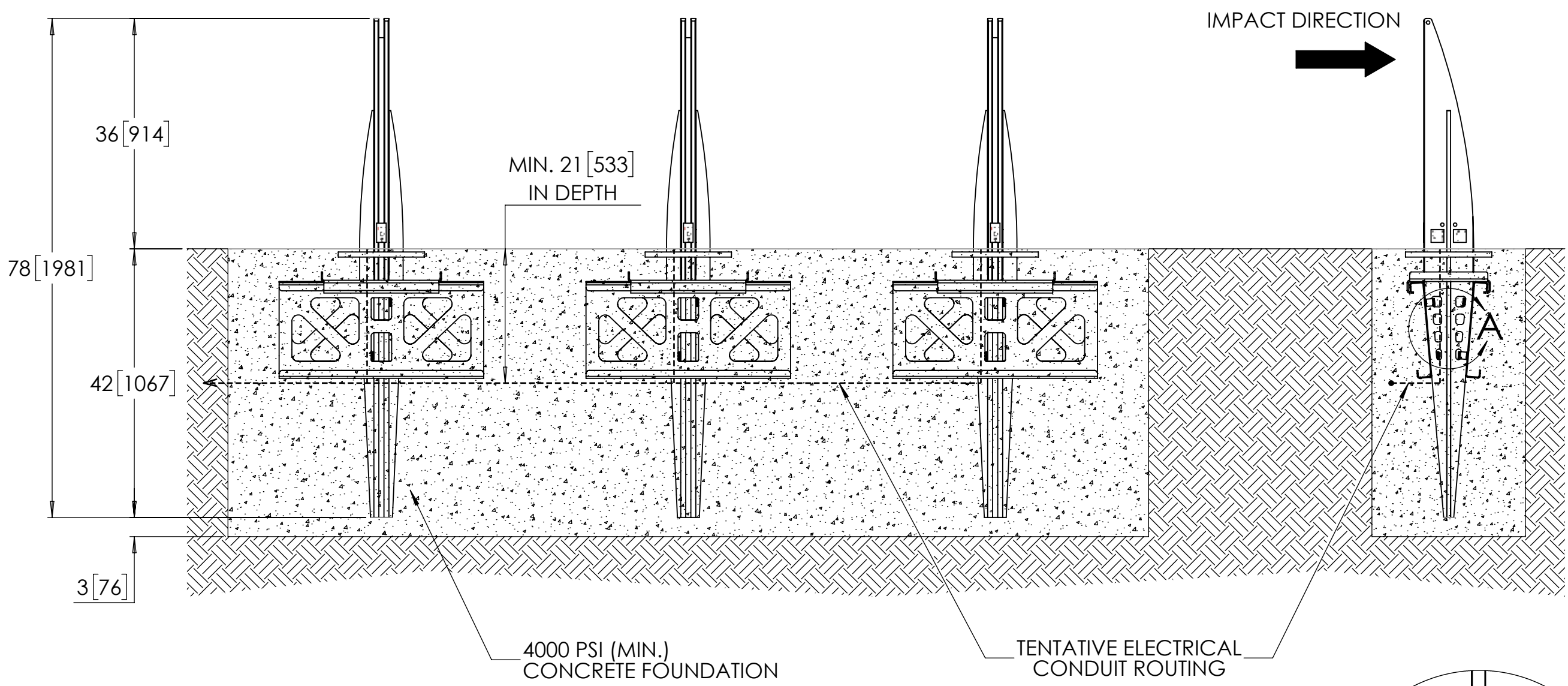
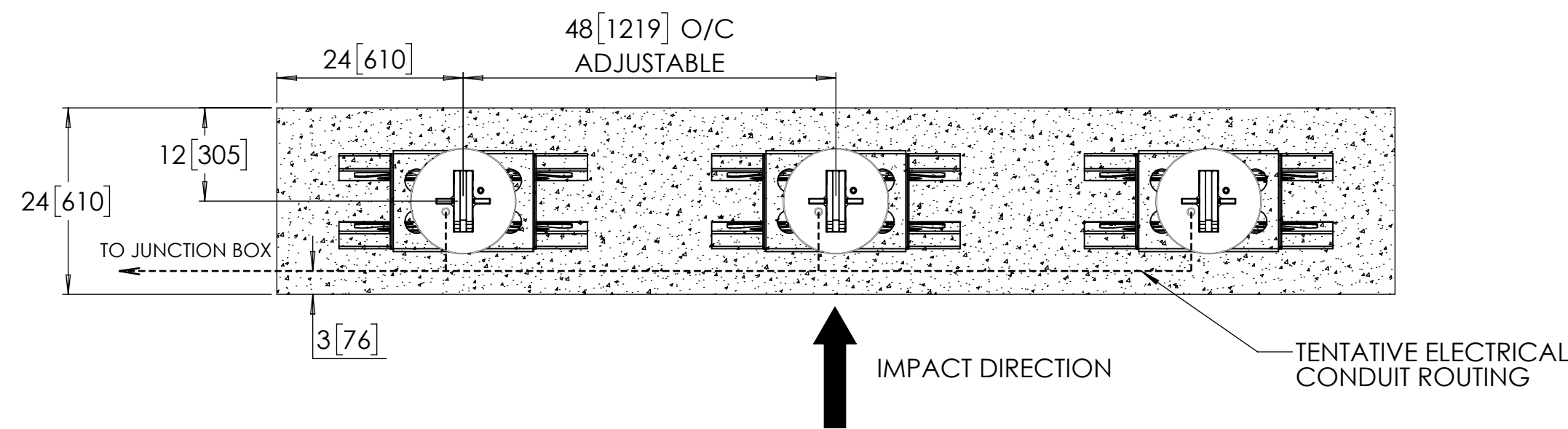
Unit 207, 6450 - 148 Street, Surrey, BC V3S 7G7, Canada  
1-877-789-3245 info@reliance-foundry.com  
www.reliance-foundry.com

TITLE: S30 FIXED BOLLARD INSTALLATION

	NAME	DATE	SIZE	DWG: 250-0033-PB	REV
DRAWN	JF	2025-03-07	C	PART: ASM: 250-0033	01B
REVIEWED	JL	2025-03-10	SCALE: 1:15		SHEET 1 OF 2

# Crash-rated Bollard, Model R-1010-S30

TYPICAL BOLLARD ARRAY SHOWN (1 BOLLARD CAN WITHSTAND VEHICLE IMPACT ALONE)



**General Description:**

Engineered for superior resistance, the Vector S30 Bollard is our ultimate solution for storefront safety. Its advanced design, featuring a curved profile and side flanges, provides maximum strength and impact distribution. Like its counterparts, the Vector S30 Bollard is designed for easy, cost-effective installation, without the need for rebar. Successfully tested and certified to ASTM F3016 S30 P2 with a penetration distance of just 1.97 feet, the Vector S30 Bollard offers storefront owners unmatched protection against vehicle intrusions.

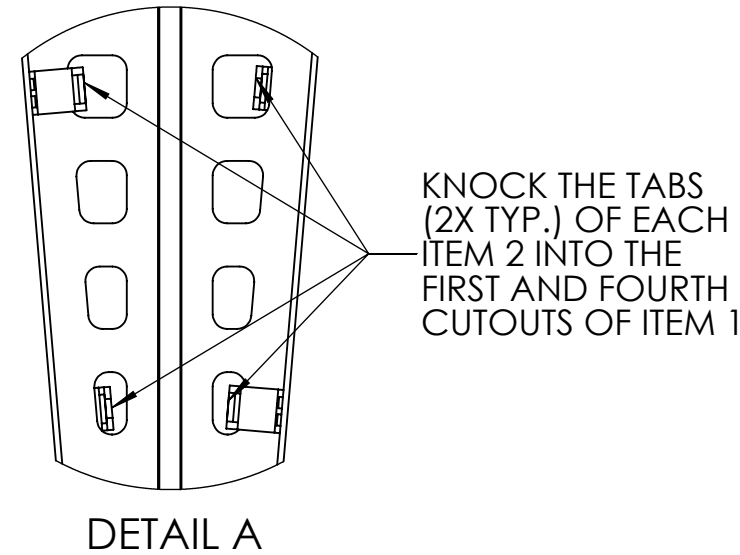
**Specifications:**

Total Height: 78" [1981 mm]  
Height Above Grade: 36" [914 mm]  
Height Below Grade: 42" [1067 mm]  
Weight: 340 lbs [154 kg]  
Material: Steel  
Finish: Hot-dip Galvanised

For more information on bollard installation, please visit:  
<https://www.reliance-foundry.com/bollard/vector-fixed-installation>



- NOTES:**
- EMBEDMENT DETAILS ARE FOR REFERENCE ILLUSTRATION ONLY. MINIMUM FOUNDATION SIZES DEPEND ON LOCAL SOIL CONDITIONS, WEATHER CONDITIONS, AND ENGINEERING REQUIREMENTS.
  - BOLLARD IS PROVIDED AS SHOWN, WITH PARTS LISTED BELOW. CONCRETE FOUNDATION AND/OR INSTALLATION NOT PROVIDED BY RELIANCE FOUNDRY.
  - THIS DRAWING IS NOT DRAWN TO SCALE. DIMENSIONS PROVIDED HEREIN IS FOR REFERENCE ONLY. PLEASE CONSULT RELIANCE FOUNDRY SALES PROFESSIONALS IF ANY DIMENSION IS CRITICAL TO YOUR PARTICULAR INSTALLATION.
  - RELIANCE FOUNDRY RESERVES THE RIGHT TO AMEND DESIGN AND SPECIFICATIONS WITHOUT PRIOR NOTICE FOR PRODUCT IMPROVEMENT.



ITEM	QTY	PART NUMBER	DESCRIPTION	MATERIAL	INDIVIDUAL WEIGHT (LB)
1	3	250-0033	S30 FIXED BOLLARD ASSEMBLY	STEEL	278
2	6	100-0097	FOUNDATION REINFORCEMENT BRACKET	STEEL	22
3	3	100-0098	FOUNDATION REINFORCEMENT BRACKET - TOP	STEEL	17



Unit 207, 6450 - 148 Street, Surrey, BC V3S 7G7, Canada  
1-877-789-3245 info@reliance-foundry.com  
[www.reliance-foundry.com](http://www.reliance-foundry.com)

TITLE: S30 FIXED BOLLARD INSTALLATION					
	NAME	DATE	SIZE	DWG: 250-0033-PB	REV
DRAWN	JF	2025-03-07	C	PART: ASM: 250-0033	01B
REVIEWED	JL	2025-03-10	SCALE: 1:18		SHEET 2 OF 2