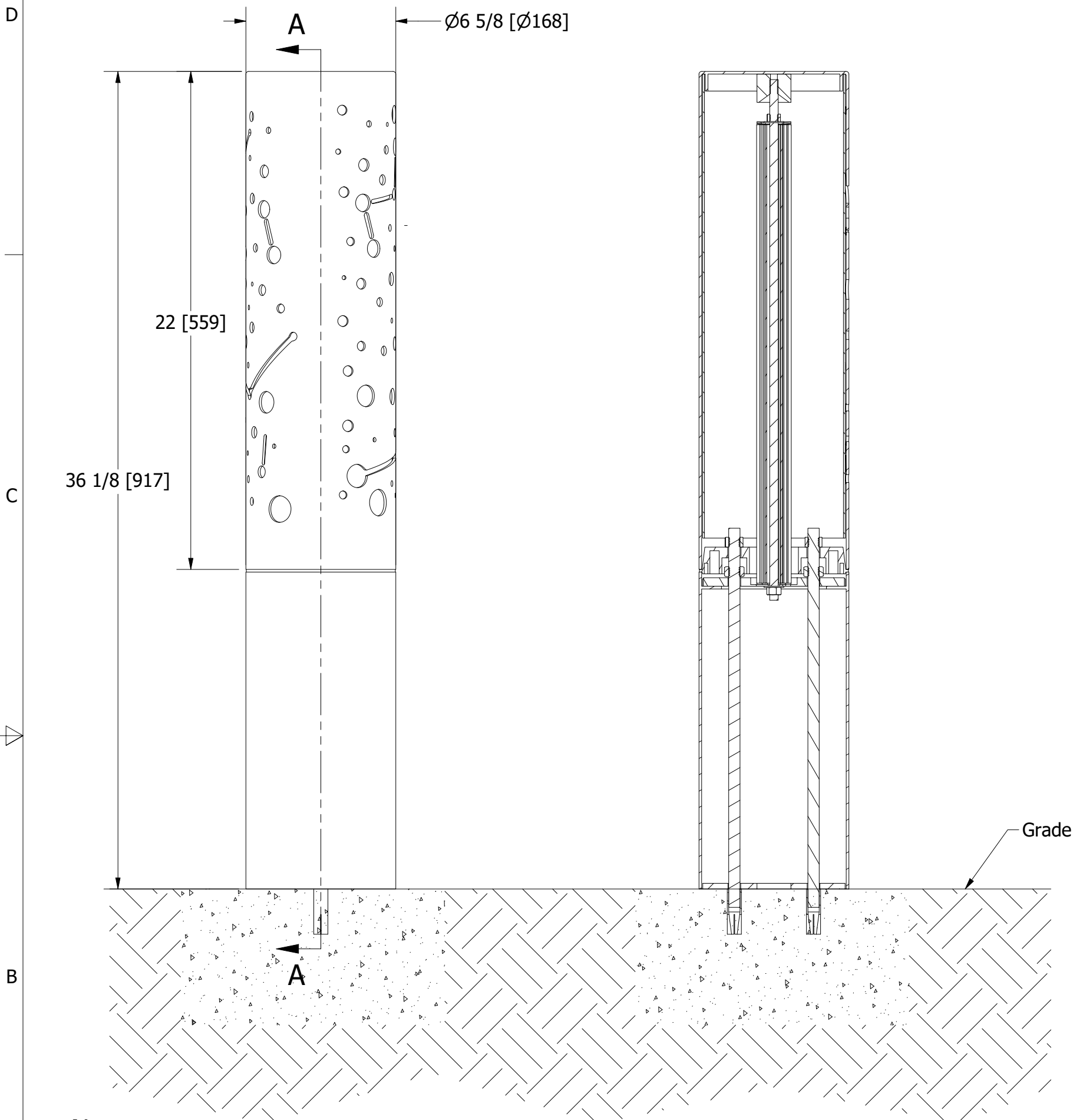


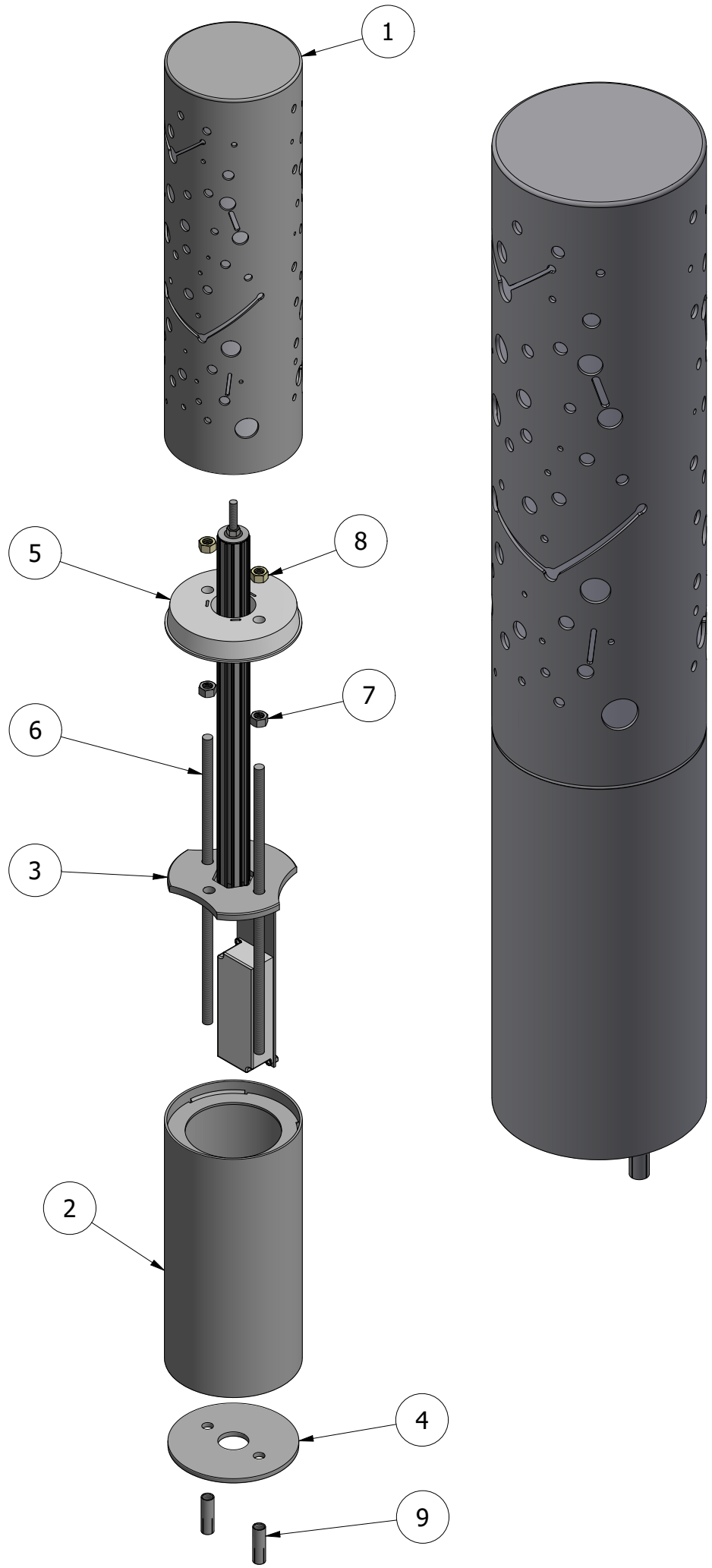
R-6304 Constellation Bollard



Notes:

- Embedment details are for reference illustration only. Minimum foundation sizes depend on local soil conditions, weather conditions and engineering requirements.
- Bollard is provided as shown with parts listed below. Concrete foundation and/or installation not provided by Reliance Foundry.
- This drawing is not drawn to scale. Dimensions provided herein are for reference only. Please consult Reliance Foundry sales professionals if any dimension is critical to your particular installation.
- Reliance Foundry reserves the right to amend design and specifications without prior notice for product improvement.

SECTION A-A



General Description:

The R-6304 Constellation Light Bollard combines innovation and functionality with a sleek 316 stainless steel finish for corrosion protection. Featuring AC-powered LED lighting options in 4000 K neutral white or RGB with 8 switchable colors, it enhances visibility and transforms dimly lit spaces. Its star-inspired cut-outs provide a unique aesthetic, making it perfect for illuminating pathways, accentuating landscapes, and increasing safety.

For more information on bollard post installation, please visit:
www.reliance-foundry.com/bollard/installation-bollards

Specifications:

Total Height: 36 1/8" [917mm]

Diameter: 6 5/8" [168mm]

Weight: 32.5 lbs [14.8 kg]

Material: Stainless Steel 316

Finish Options:

- Satin No.6

Light Color Options:

- Warm White (3000K)
- Neutral White (4000K)
- Red
- Green
- Blue
- Yellow
- Cyan
- Violet

RELIANCE FOUNDRY
— SINCE 1925 —

Unit 207, 6450 - 148 Street, Surrey, BC V3S 7G7, Canada
1-877-789-3245 info@reliance-foundry.com
www.reliance-foundry.com

TITLE

R-6304 Constellation Bollard

SIZE

C

DWG NO

R-6304_public

REV

A06