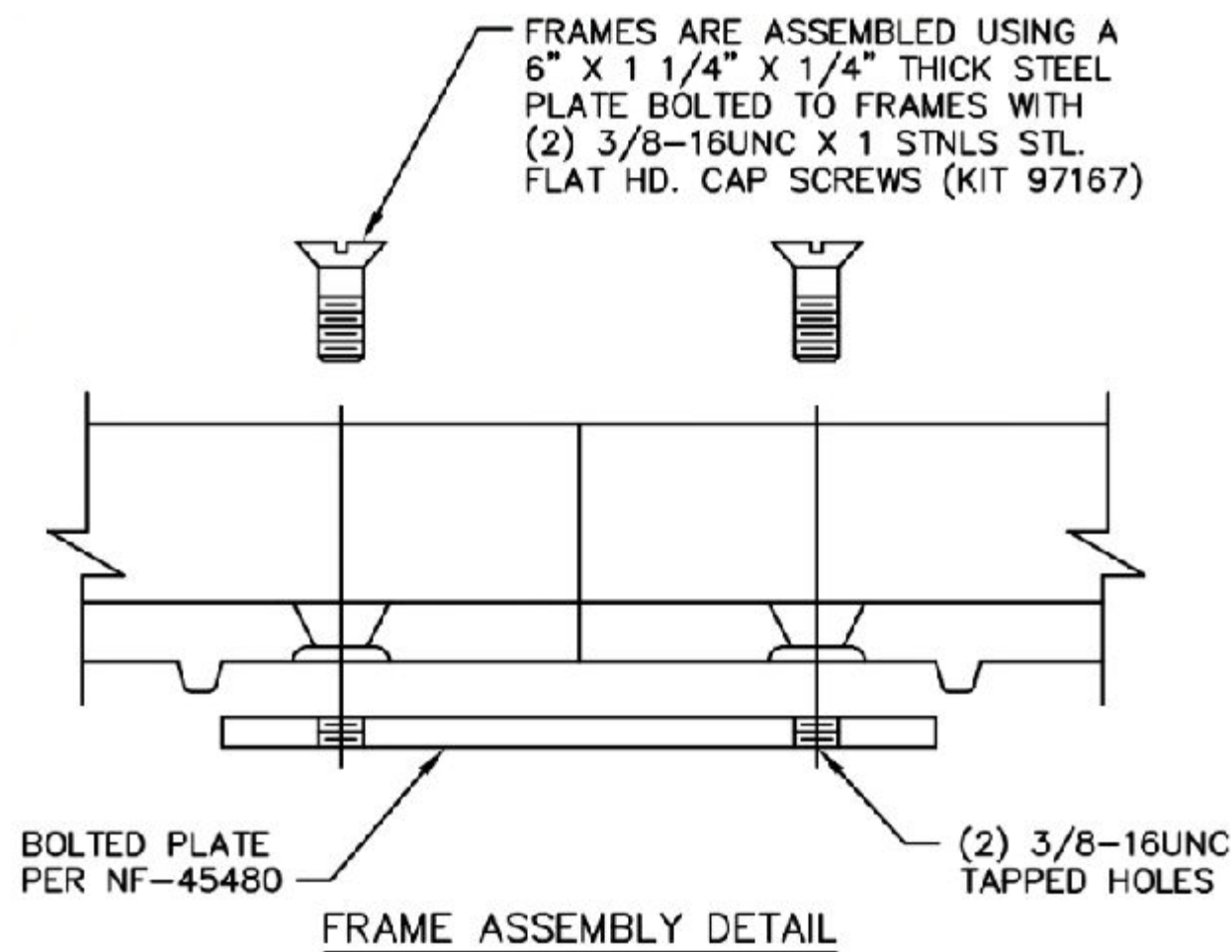
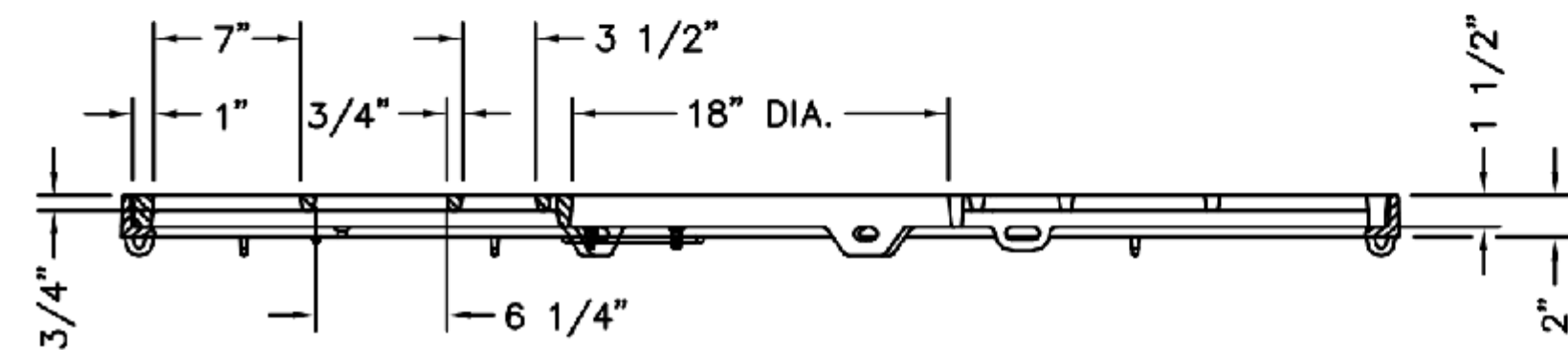
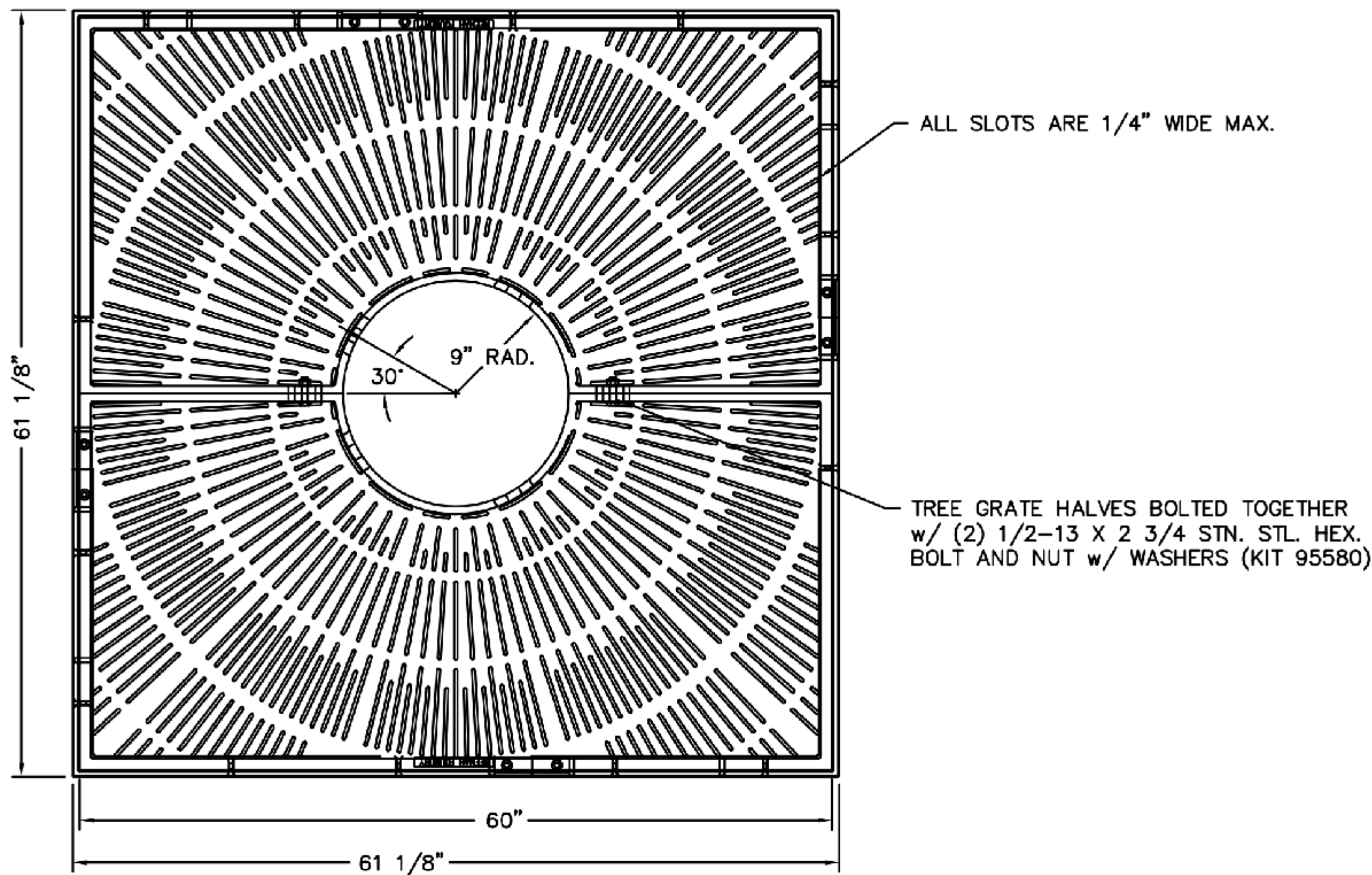


R-8707 Tree Grates and Frames



NOTES:

- THIS DRAWING IS NOT DRAWN TO SCALE. DIMENSIONS PROVIDED HEREIN IS FOR REFERENCE ONLY. PLEASE CONSULT RELIANCE FOUNDRY SALES PROFESSIONALS IF ANY DIMENSION IS CRITICAL TO YOUR PARTICULAR INSTALLATION.
- RELIANCE FOUNDRY RESERVES THE RIGHT TO AMEND DESIGN AND SPECIFICATIONS WITHOUT PRIOR NOTICE FOR PRODUCT IMPROVEMENT.

General Description:

R-8707 Tree Grates and Frames
60" x 60"
180° Section
18" Tree Opening

Specifications:

Length: 61 1/8" [1553]
Width: 61 1/8" [1553]
Weight: 696 lb [316 kg]
Material: Cast Gray Iron (ASTM A-48, Class 35B)
Finish: Uncoated

Components:

4x Frames 8500-6060
2x Tree Grates 8707-0002
2x Tree Grate Bolt Sets 95580
4x Frame Bolting Screw Kits
4x Steel Plates Bolted to Frames



Unit 207, 6450 - 148 Street, Surrey, BC V3S 7G7, Canada
1-877-789-3245 info@reliance-foundry.com
www.reliance-foundry.com

TITLE:
R-8707 TREE GRATES AND
FRAMES

	NAME	DATE	SIZE	DWG:	REV
DRAWN	JF	2025-08-06	C	PART:	01A
REVIEWED	JL	2025-08-15	SCALE: 1:15	ASM:	
					SHEET 1 OF 1