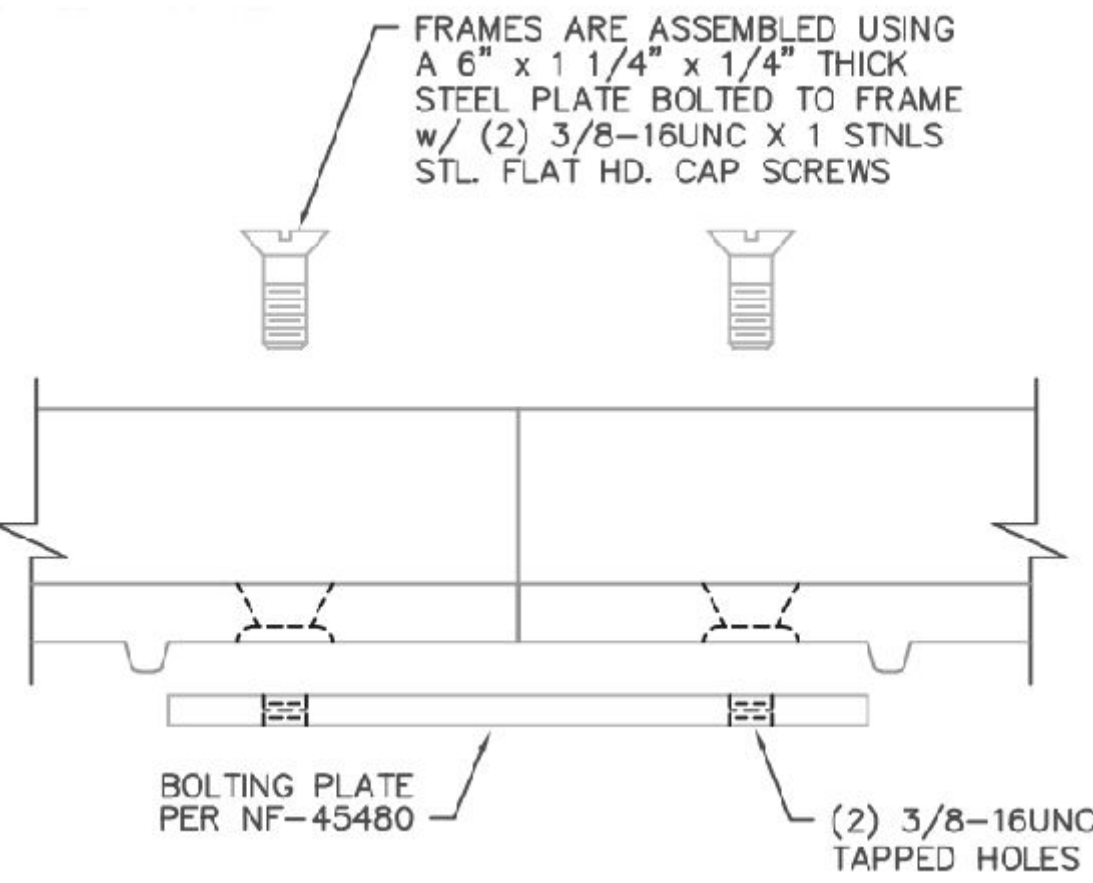
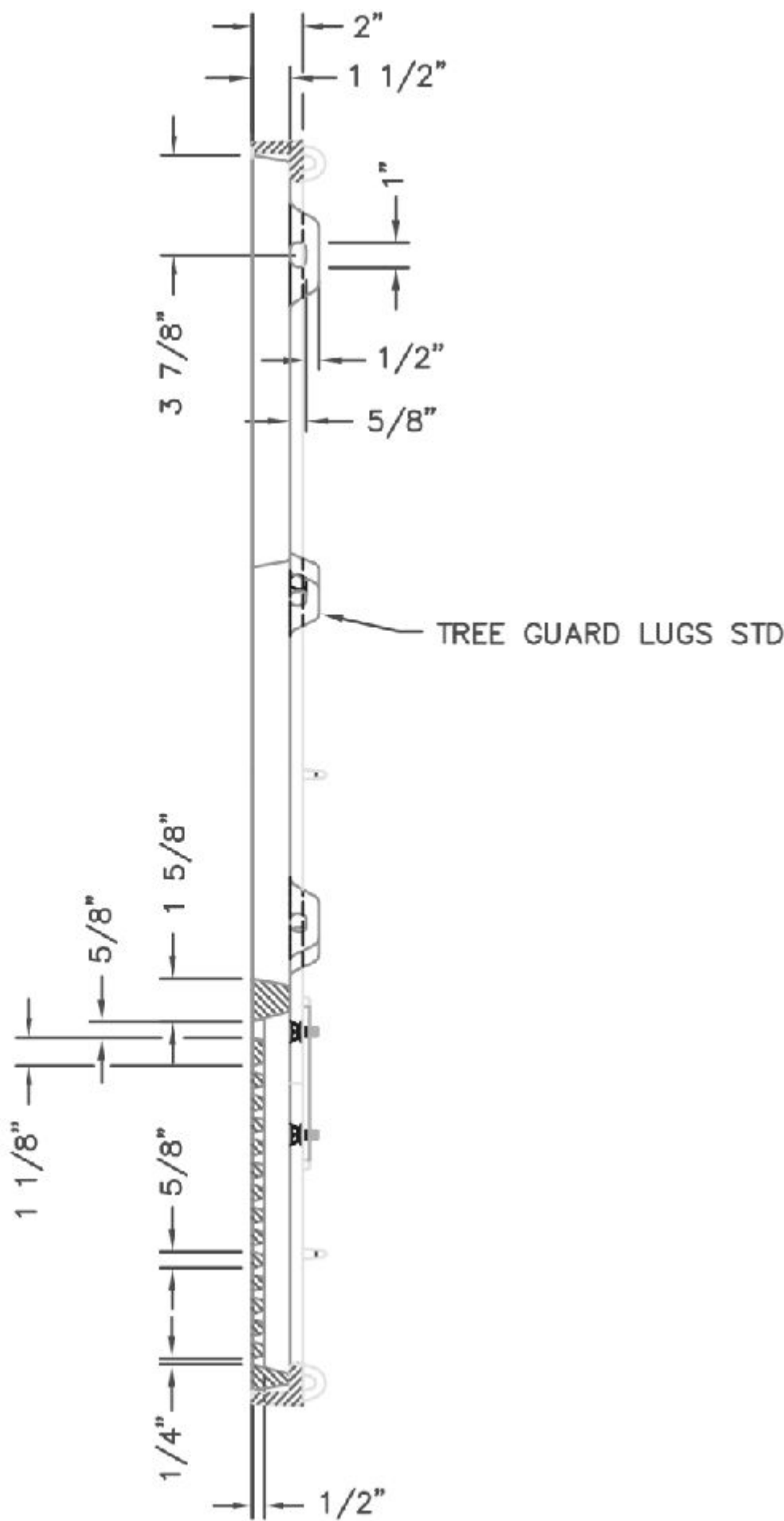
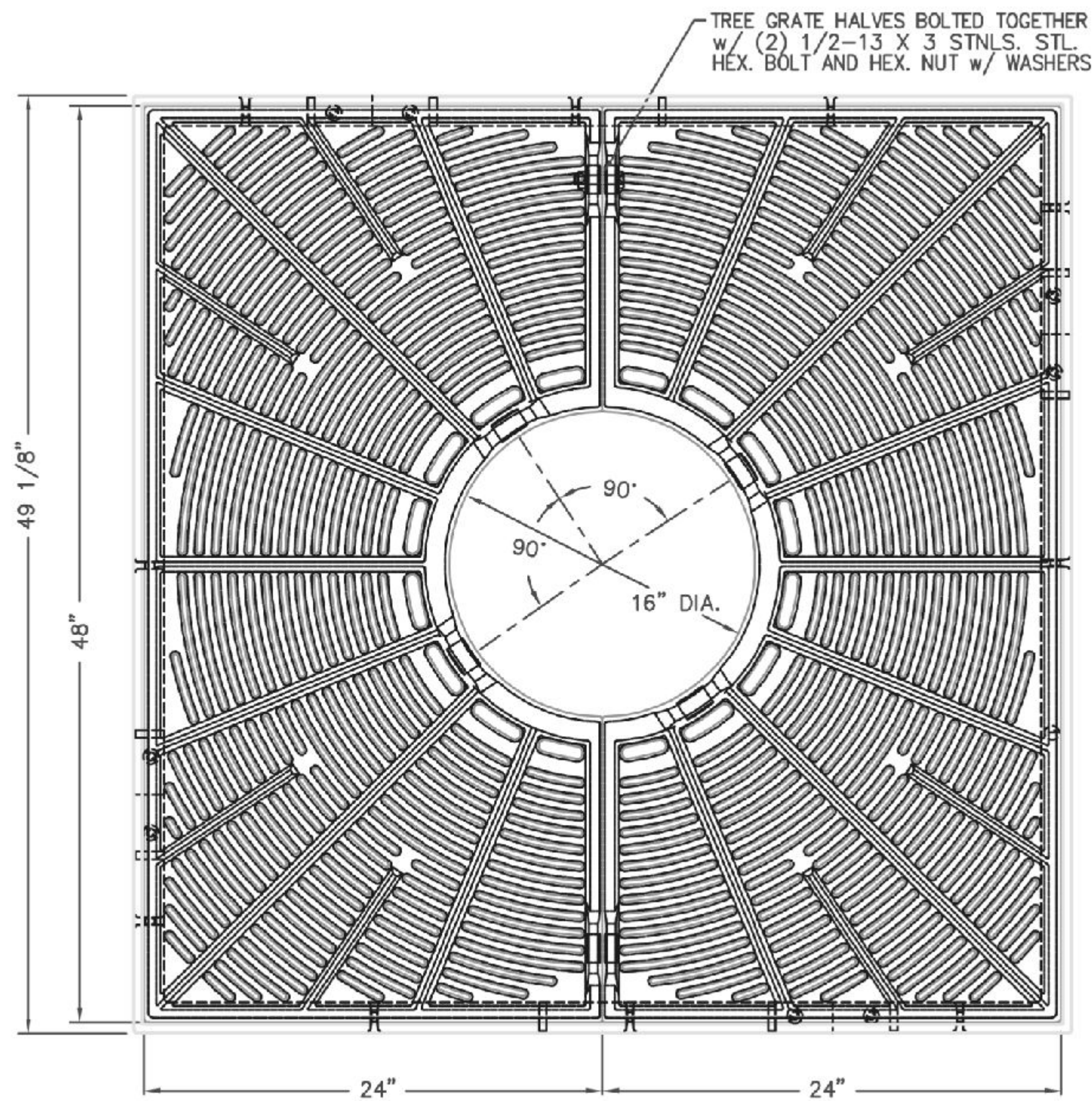


R-8708 Tree Grates and Frames



General Description:

R-8708 Tree Grates and Frames
48" x 48"
180° Section
16" Tree Opening

Specifications:

Length: 49 1/8" [1248]
Width: 49 1/8" [1248]
Weight: 368 lb [167 kg]
Material: Cast Gray Iron (ASTM A-48, Class 35B)
Finish: Uncoated

Components:

4x Frames 8500-4848
2x Tree Grates 8708-0017
2x Tree Grate Bolt Sets 95580
4x Frame Bolting Screw Kits
4x Steel Plates Bolted to Frames

NOTES:

- THIS DRAWING IS NOT DRAWN TO SCALE. DIMENSIONS PROVIDED HEREIN IS FOR REFERENCE ONLY. PLEASE CONSULT RELIANCE FOUNDRY SALES PROFESSIONALS IF ANY DIMENSION IS CRITICAL TO YOUR PARTICULAR INSTALLATION.
- RELIANCE FOUNDRY RESERVES THE RIGHT TO AMEND DESIGN AND SPECIFICATIONS WITHOUT PRIOR NOTICE FOR PRODUCT IMPROVEMENT.



Unit 207, 6450 - 148 Street, Surrey, BC V3S 7G7, Canada
1-877-789-3245 info@reliance-foundry.com
www.reliance-foundry.com

TITLE:
R-8708 TREE GRATES AND
FRAMES

	NAME	DATE	SIZE	DWG:	REV
DRAWN	JF	2025-08-06	C	PART: R-8708-01	01A
REVIEWED	JL	2025-08-15	SCALE: 1:15	ASM:	SHEET 1 OF 1