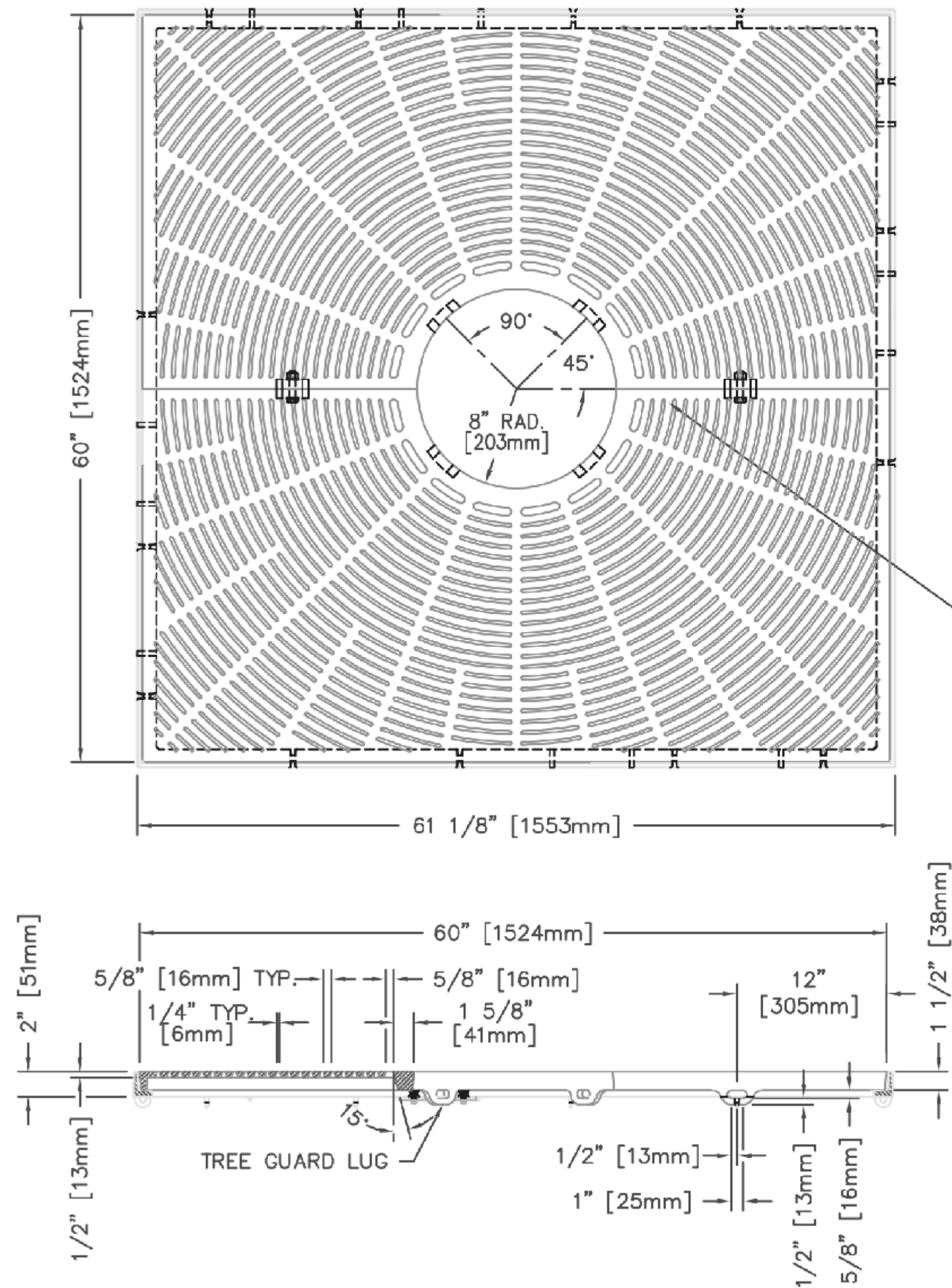
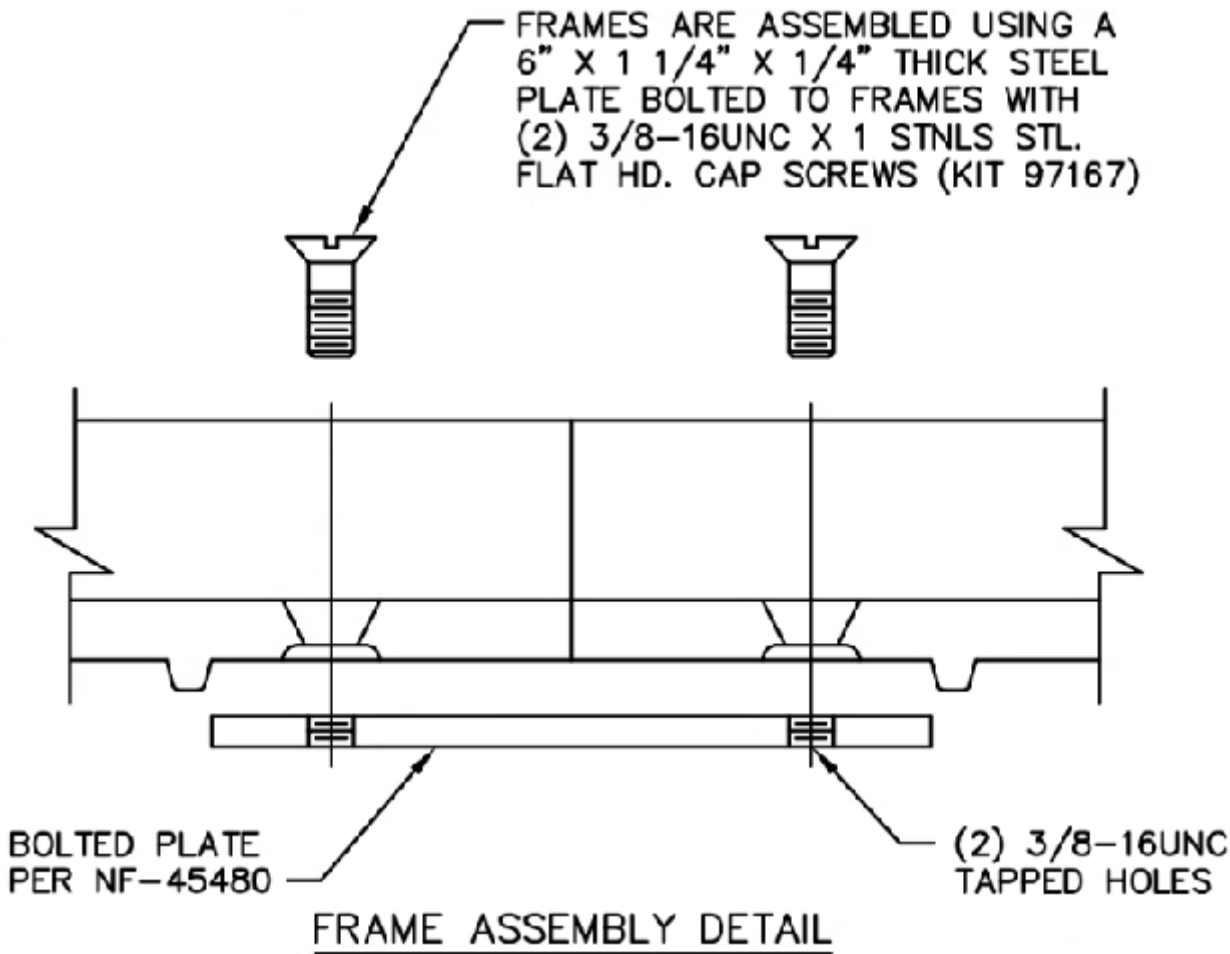


R-8713 Tree Grates and Frames



TREE GRATE HALVES BOLTED TOGETHER  
w/ (2) 1/2-13 X 3" STNLS. STL. HEX.  
BOLT AND HEX. NUT w/ WASHERS



General Description:

R-8713 Tree Grates and Frames  
60" x 60"  
180° Section  
16" Tree Opening

Specifications:


Length: 61 1/8" [1553]  
Width: 61 1/8" [1553]  
Weight: 500 lb [227 kg]  
Material: Cast Gray Iron (ASTM A-48, Class 35B)  
Finish: Uncoated

Components:

4x Frames 8500-6060  
2x Tree Grates 8713-0006  
2x Tree Grate Bolt Sets 95580  
4x Frame Bolting Screw Kits  
4x Steel Plates Bolted to Frames

NOTES:

- THIS DRAWING IS NOT DRAWN TO SCALE. DIMENSIONS PROVIDED HEREIN IS FOR REFERENCE ONLY. PLEASE CONSULT RELIANCE FOUNDRY SALES PROFESSIONALS IF ANY DIMENSION IS CRITICAL TO YOUR PARTICULAR INSTALLATION.
- RELIANCE FOUNDRY RESERVES THE RIGHT TO AMEND DESIGN AND SPECIFICATIONS WITHOUT PRIOR NOTICE FOR PRODUCT IMPROVEMENT.



Unit 207, 6450 - 148 Street, Surrey, BC V3S 7G7, Canada  
1-877-789-3245 info@reliance-foundry.com  
www.reliance-foundry.com

TITLE:  
R-8713 TREE GRATES AND  
FRAMES

NAME	DATE	SIZE	DWG: R-8713-01	REV
DRAWN	JF	2025-08-06	PART: ASM:	01A
REVIEWED	JL	2025-08-15	SCALE: 1:15	SHEET 1 OF 1