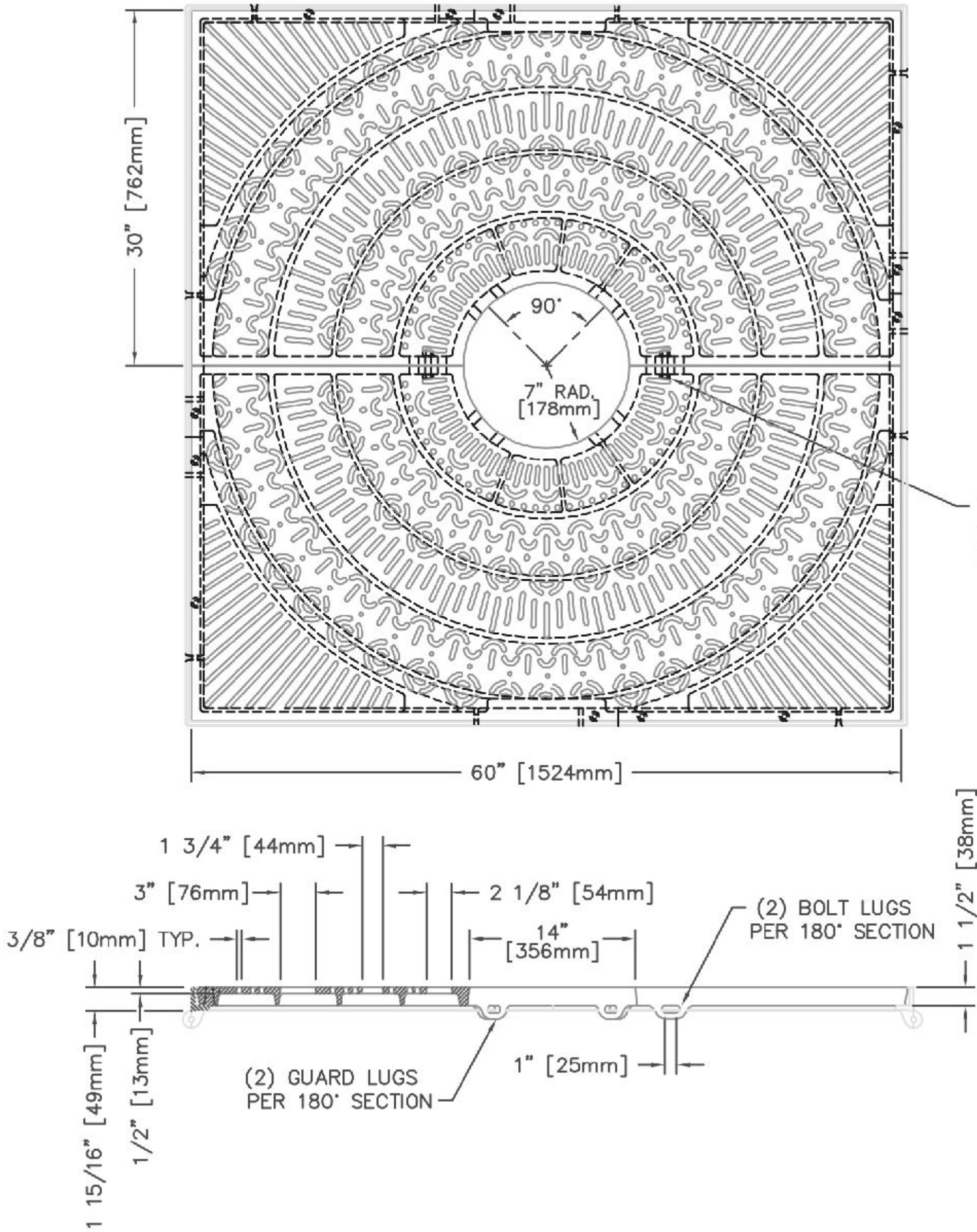
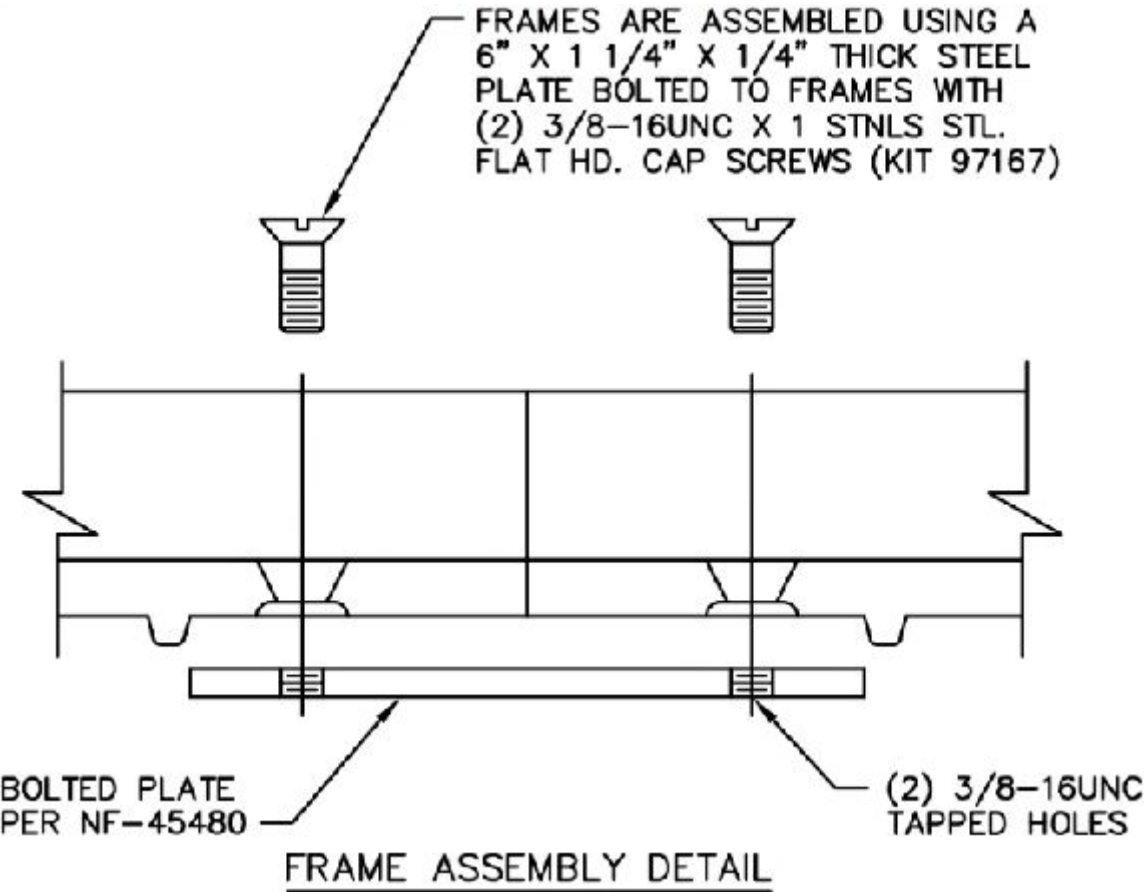


R-8754-1 Tree Grates and Frames



TREE GRATE HALVES BOLTED TOGETHER
w/ (2) 1/2-13 X 3 STNLS. STL.
HEX. BOLT AND HEX. NUT w/ WASHERS



General Description:

R-8754-1 Tree Grates and Frames
60" x 60"
180° Section
14" Tree Opening

Specifications:

Length: 61 1/8" [1553]
Width: 61 1/8" [1553]
Weight: 538 lb [245 kg]
Material: Cast Gray Iron (ASTM A-48, Class 35B)
Finish: Uncoated

Components:

4x Frames 8500-6060
2x Tree Grates 8754-0004
2x Tree Grate Bolt Sets 95580
4x Frame Bolting Screw Kits
4x Steel Plates Bolted to Frames

NOTES:

- THIS DRAWING IS NOT DRAWN TO SCALE. DIMENSIONS PROVIDED HEREIN IS FOR REFERENCE ONLY. PLEASE CONSULT RELIANCE FOUNDRY SALES PROFESSIONALS IF ANY DIMENSION IS CRITICAL TO YOUR PARTICULAR INSTALLATION.
- RELIANCE FOUNDRY RESERVES THE RIGHT TO AMEND DESIGN AND SPECIFICATIONS WITHOUT PRIOR NOTICE FOR PRODUCT IMPROVEMENT.



Unit 207, 6450 - 148 Street, Surrey, BC V3S 7G7, Canada
1-877-789-3245 info@reliance-foundry.com
www.reliance-foundry.com

TITLE:
R-8754-1 TREE GRATES AND
FRAMES

	NAME	DATE	SIZE	DWG:	REV
DRAWN	JF	2025-08-06	C	PART: R-8754-1-01	01A
REVIEWED	JL	2025-08-15	SCALE: 1:15	ASM:	SHEET 1 OF 1