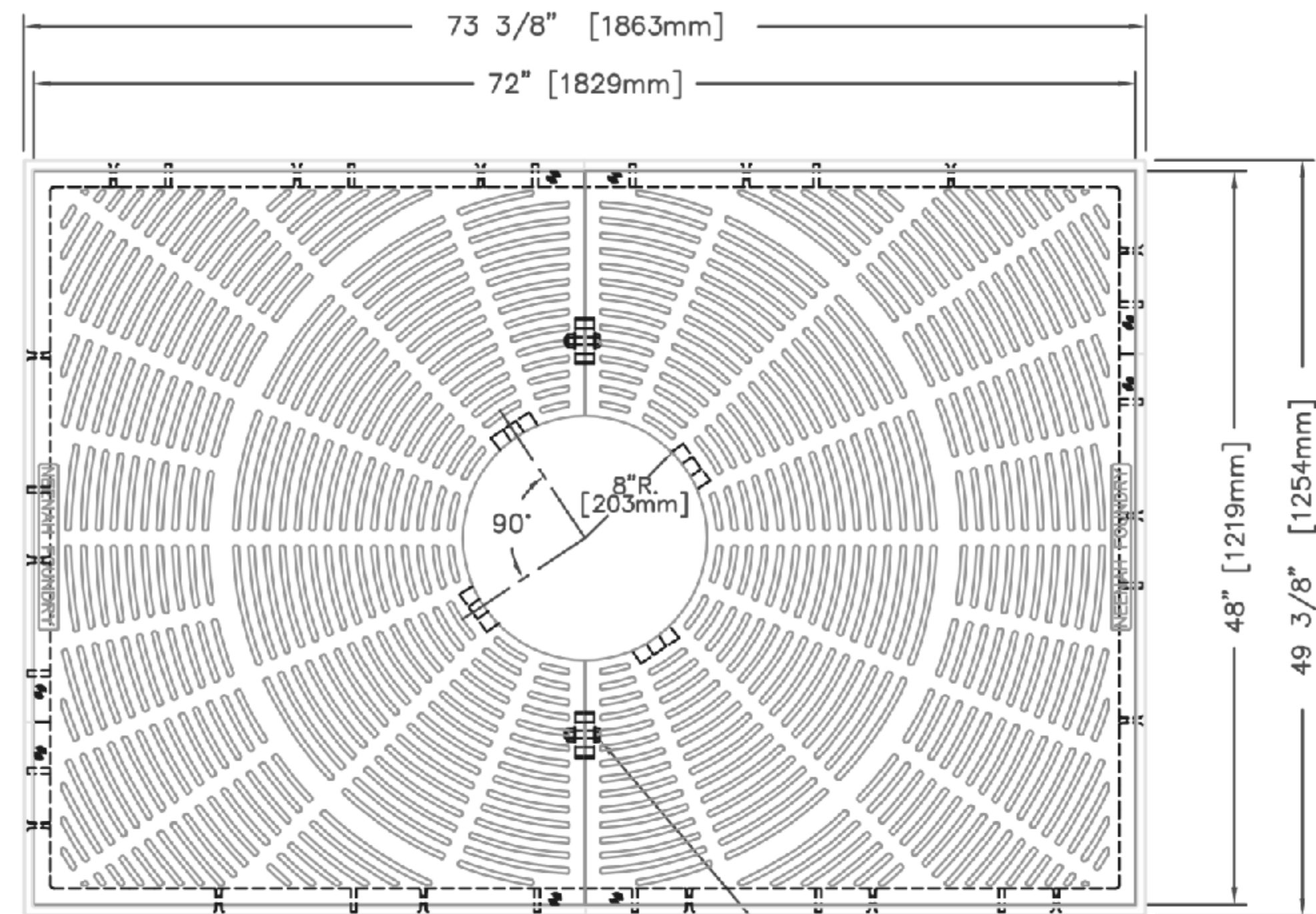
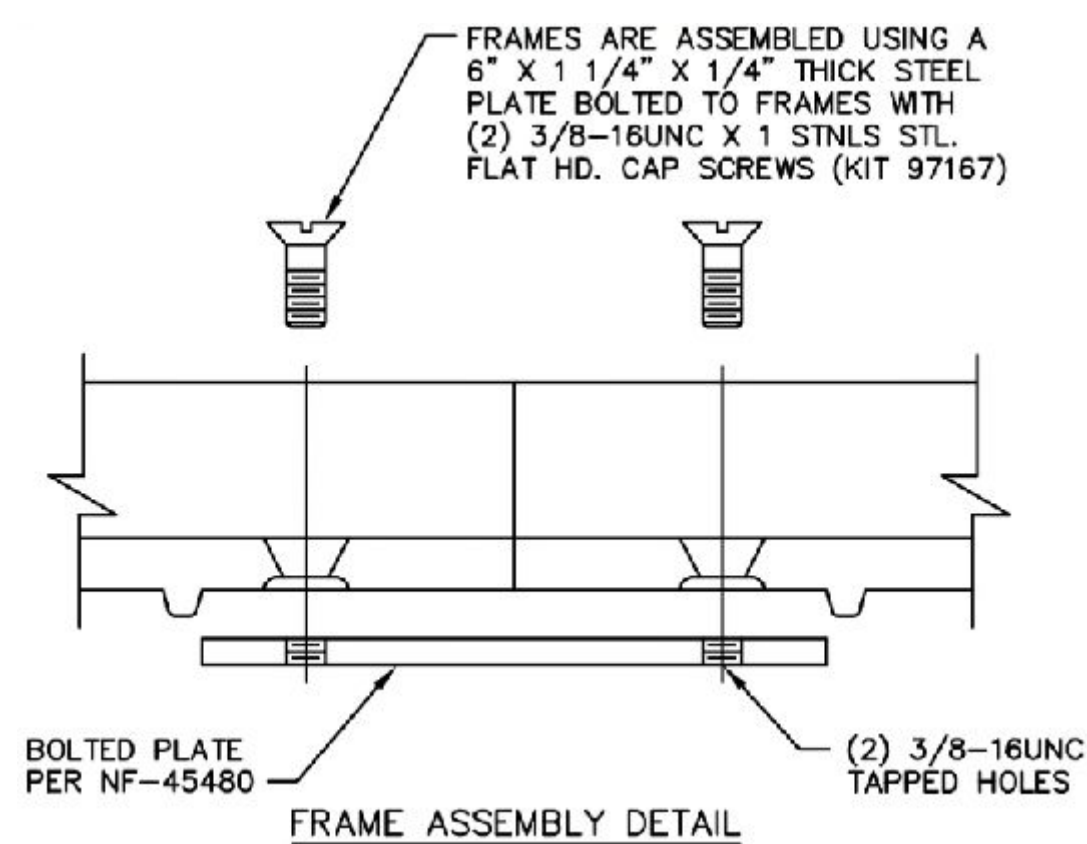
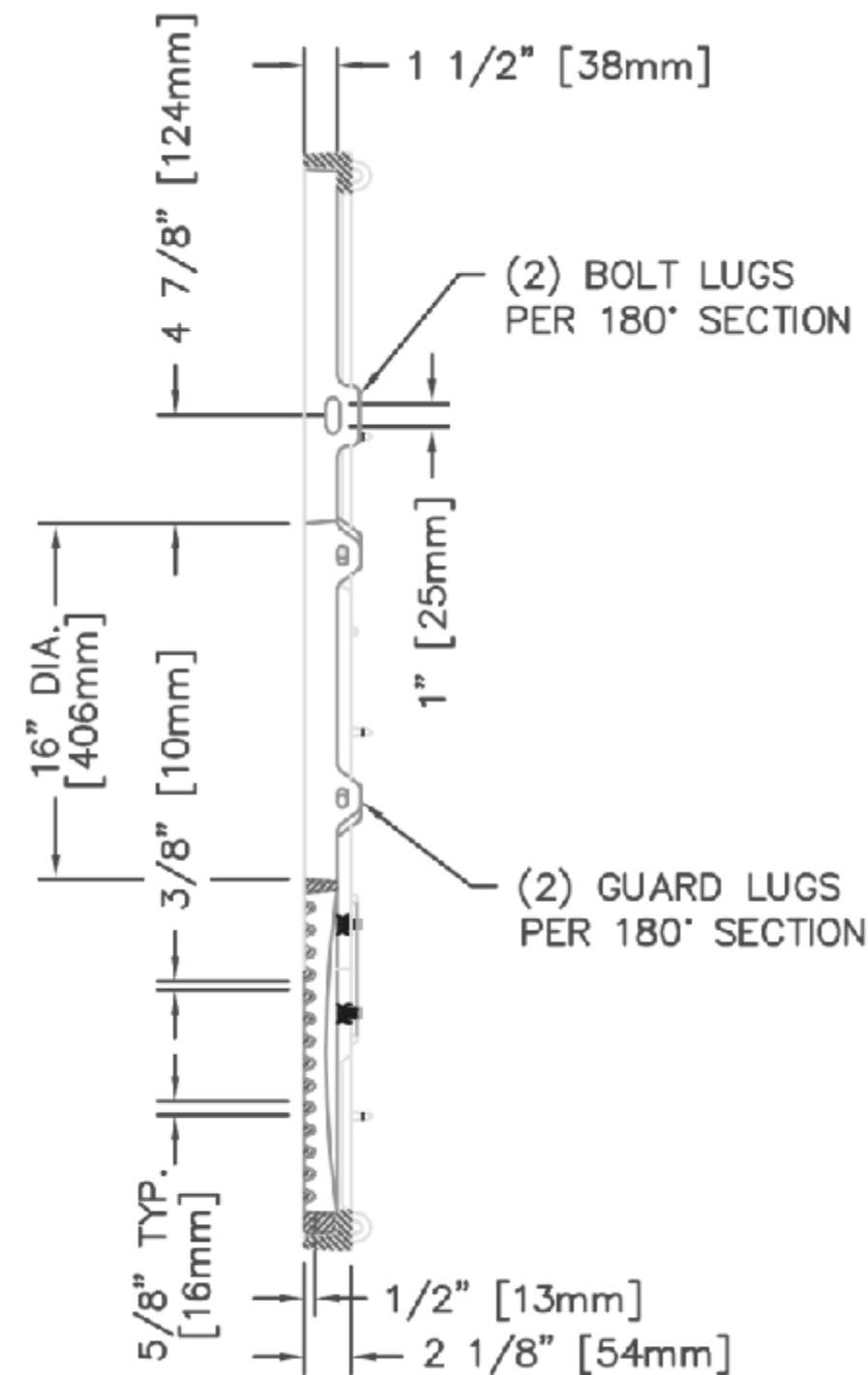


R-8811 Tree Grates and Frames



TREE GRATE HALVES BOLTED TOGETHER
w/ (2) 1/2-13 X 3 STNLS. STL.
HEX. BOLT AND HEX. NUT w/ WASHERS



General Description:

R-8811 Tree Grates and Frames
72" x 48"
180° Section
16" Tree Opening

Specifications:

Length: 73 3/8" [1864]
Width: 49 3/8" [1254]
Weight: 470 lb [214 kg]
Material: Cast Gray Iron (ASTM A-48, Class 35B)
Finish: Uncoated

Components:

2x Frames 8500-4872
2x Frames 8500-7272
2x Tree Grates 8811-0002
2x Tree Grate Bolt Sets 95580
4x Frame Bolting Screw Kits
4x Steel Plates Bolted to Frames

NOTES:

- THIS DRAWING IS NOT DRAWN TO SCALE. DIMENSIONS PROVIDED HEREIN IS FOR REFERENCE ONLY. PLEASE CONSULT RELIANCE FOUNDRY SALES PROFESSIONALS IF ANY DIMENSION IS CRITICAL TO YOUR PARTICULAR INSTALLATION.
- RELIANCE FOUNDRY RESERVES THE RIGHT TO AMEND DESIGN AND SPECIFICATIONS WITHOUT PRIOR NOTICE FOR PRODUCT IMPROVEMENT.



Unit 207, 6450 - 148 Street, Surrey, BC V3S 7G7, Canada
1-877-789-3245 info@reliance-foundry.com
www.reliance-foundry.com

TITLE:
R-8811 TREE GRATES AND
FRAMES

NAME	DATE	SIZE	DWG:	REV
JF	2025-08-06	C	R-8811-01	01A
JL	2025-08-15	SCALE: 1:15	ASM:	SHEET 1 OF 1