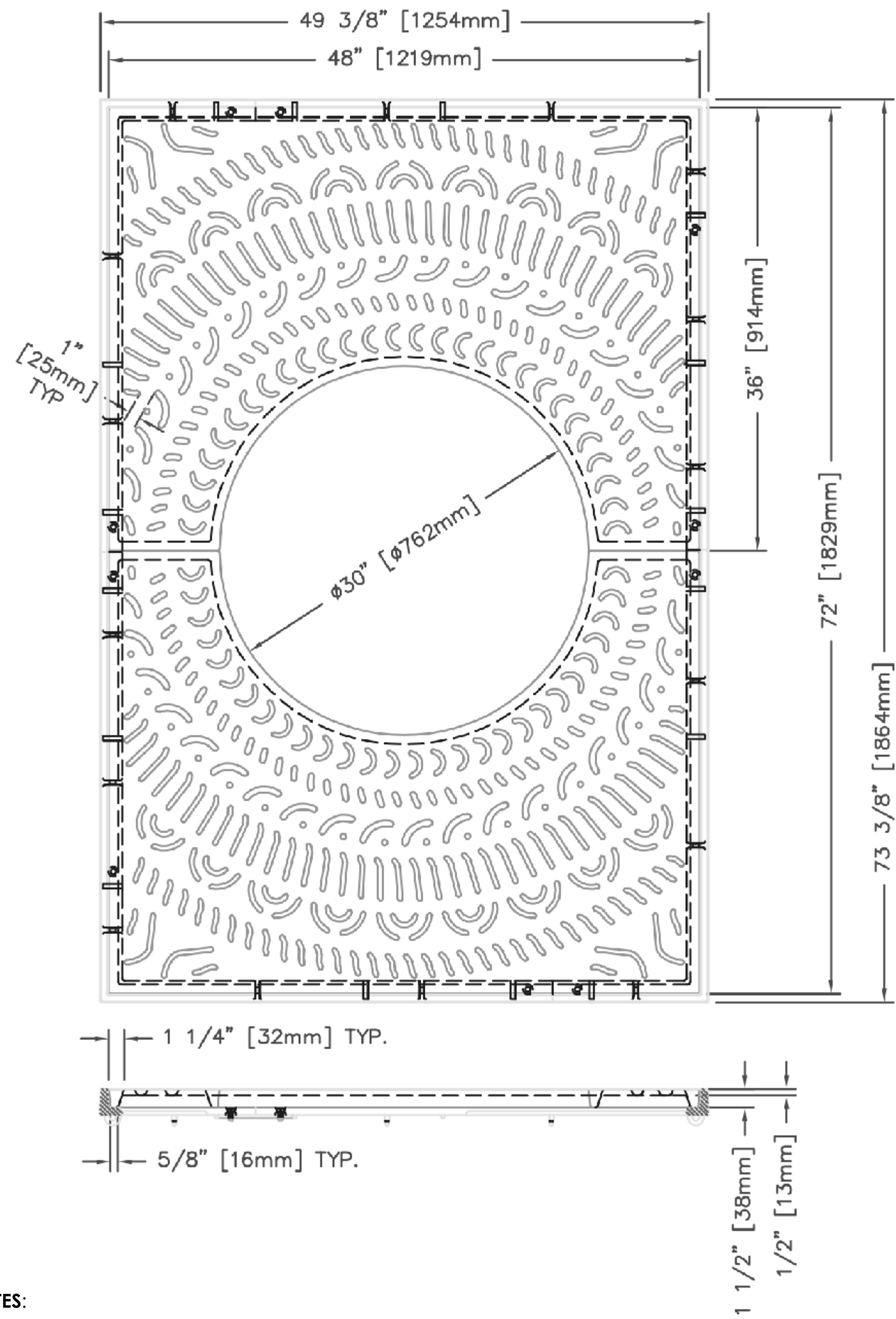
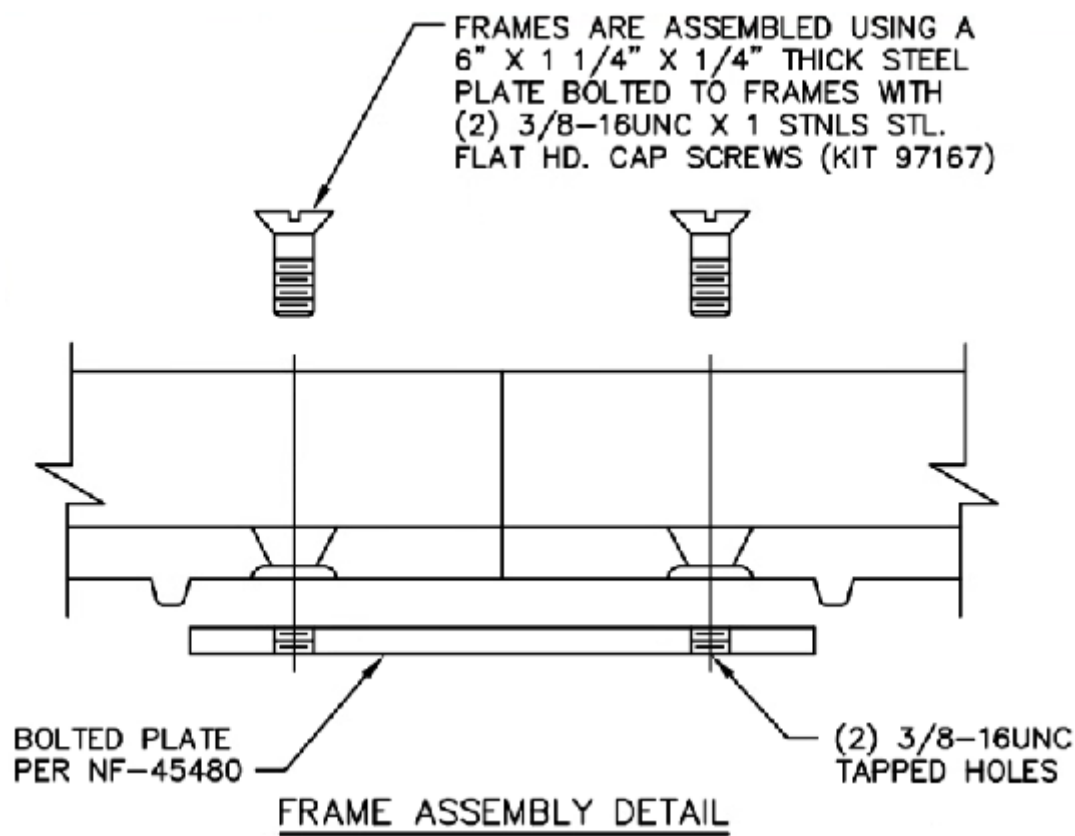


R-8819 Tree Grates and Frames



NOTES:

- THIS DRAWING IS NOT DRAWN TO SCALE. DIMENSIONS PROVIDED HEREIN IS FOR REFERENCE ONLY. PLEASE CONSULT RELIANCE FOUNDRY SALES PROFESSIONALS IF ANY DIMENSION IS CRITICAL TO YOUR PARTICULAR INSTALLATION.
- RELIANCE FOUNDRY RESERVES THE RIGHT TO AMEND DESIGN AND SPECIFICATIONS WITHOUT PRIOR NOTICE FOR PRODUCT IMPROVEMENT.



General Description:

R-8819 Tree Grates and Frames  
72" x 48"  
180° Section  
30" Tree Opening

Specifications:

Length: 73 3/8" [1864]  
Width: 49 3/8" [1254]  
Weight: 518 lb [235 kg]  
Frame Material: Cast Gray Iron (ASTM A-48, Class 35B)  
Tree Grate Material: Cast Gray Iron (ASTM A-48, Class 35A)  
Finish: Uncoated

Components:

2x Frames 8500-4872  
2x Frames 8500-7272  
2x Tree Grates 8819-0001  
2x Tree Grate Bolt Sets 95580  
4x Frame Bolting Screw Kits  
4x Steel Plates Bolted to Frames



Unit 207, 6450 - 148 Street, Surrey, BC V3S 7G7, Canada  
1-877-789-3245 info@reliance-foundry.com  
www.reliance-foundry.com

TITLE:  
R-8819 TREE GRATES AND  
FRAMES

	NAME	DATE	SIZE	DWG:	REV
DRAWN	JF	2025-08-06	C	R-8819-01	01A
REVIEWED	JL	2025-08-15	SCALE: 1:15	ASM:	SHEET 1 OF 1